

HIG Public Documentation

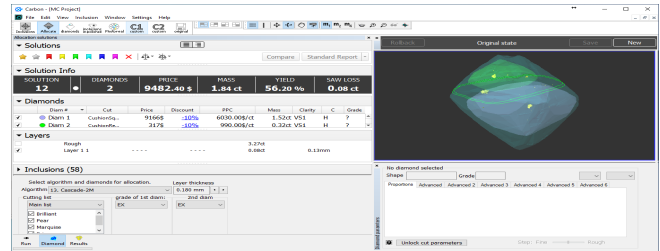
Welcome to HIG Documentation!

Search Documentation

Search

(try typing your question or the name of anything you see in the HIG user interface, e.g. "inclusion", "polished report", "photoreal", "compare", etc.)

Documentation version: **Public** (current) | switch to **Internal**



HIG is software for working with Helium IG scanner, for projects of roughs with Immersion glass.

Visit a [product page](#) on the OctoNus official site.

