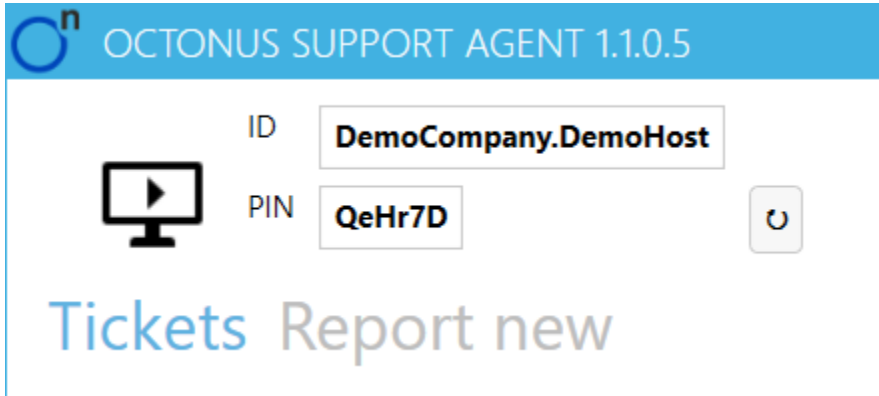


Octonus Support Client

Octonus Support Client is application for connecting to:

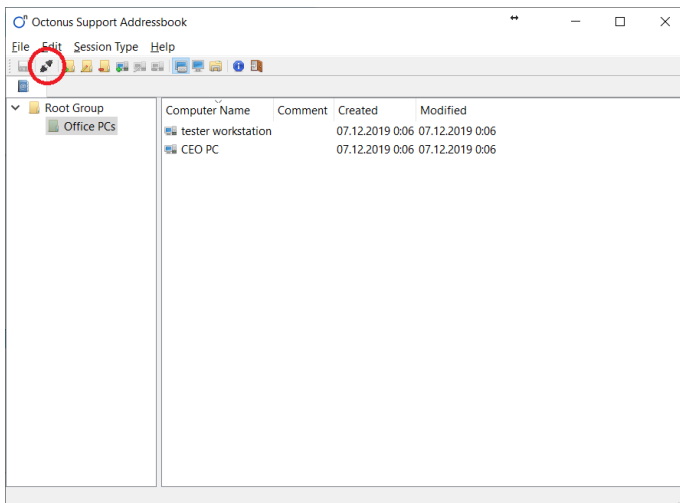
1. Remote workstations with Octonus Support Agent for remote desktop management.
2. Remote presence robots to overlook situation near Octonus hardware.
3. Any other Octonus provided video streams.

To connect to remote video stream you need to know its **ID** and **PIN**, for example remote desktop:

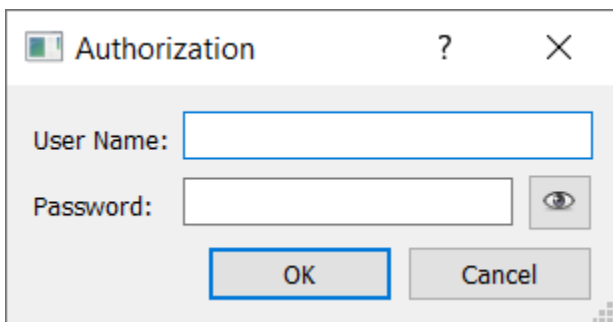


Suppose customer's user needs remote assistance, he can tell you above **ID** and **PIN** using help-desk ticket system, email, phone or messenger.

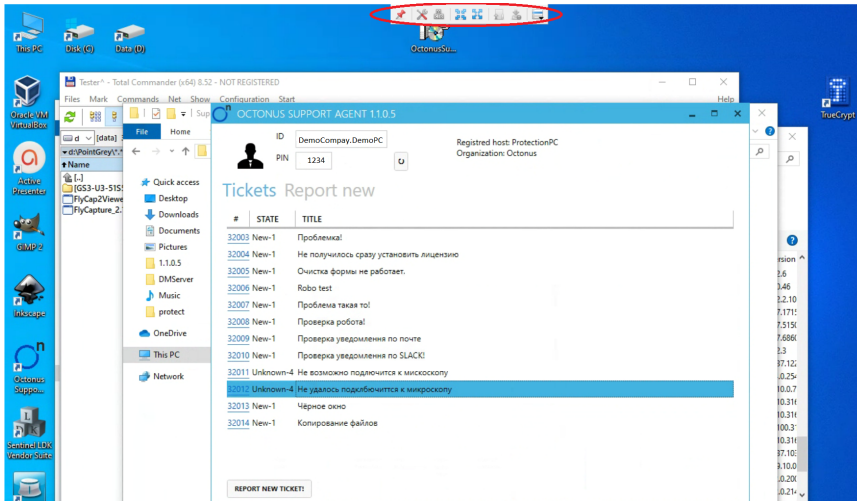
Launch Octonus Support Client application and click quick connect button:



In appeared dialog enter ID as User Name and PIN as Password, use eye button to check correctness of the password:



Window with remote desktop will appear:



When you connect to desktop management, a toolbar appears at the top of the window.



Name	Description
blocked URL Lock toolbar	If the button is clamped, the toolbar will always be displayed. Otherwise, after a few seconds after moving the mouse pointer outside the panel, it will be hidden.
blocked URL Send Ctrl+Alt+Del	Sends Ctrl+Alt+Del to remote PC
blocked URL Automatic window size	Changes the window size to the optimal one based on the size of the monitors of the remote and local computers.
blocked URL Full screen	Switches the control window to full screen or returns the original state.
blocked URL Upload file	If you have file in your PC's clipboard, press this button to upload this file to the remote PC, after upload it will be in remote PC clipboard.
blocked URL Download file	If you have file in remote PC's clipboard, press this button to download this file to your PC, after download it will be in your PC clipboard.
blocked URL Extended menu	Displays an advanced menu of advanced features.

Address book

Address book is used to perform a quick connection to computers. You can add computer groups, computers, manage connection settings to computers.

To organize computers is convenient to use groups. You can create an unlimited number of groups of varying degrees of nesting. To add, change and delete computer groups, use the corresponding items on the toolbar or in the context menus.

Computer Group Properties

?

×

Name:

Parent Group:

Root Group

Comment:

OK

Cancel

Fields in the dialogue

Name	Description
Name	The name of the computer group. The field is required.
Comment	Freely editable field for making notes. Not required.

Computer management

To add a computer, select the group to which you want to add it and click "Add Computer". To change a computer, right-click on it and select "Change Computer". The computer properties dialog opens.

Host Properties

?

×

General

Name:

Parent Group:

Root Group

Password:

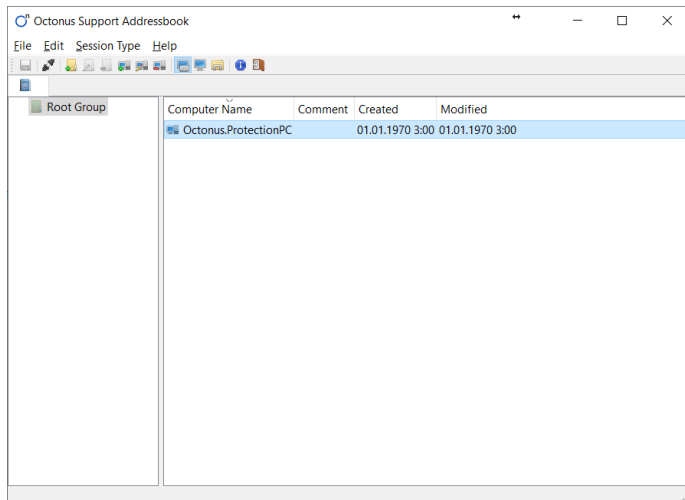
Comment:

OK

Cancel

Name	Description
Name	ID of the video session (Remote desktop or Robot)
Password	PIN to connect to a remote computer. Not required. If the field is empty, then a login dialog will be displayed upon connection.
Comment	Freely editable field for making notes. Not required.

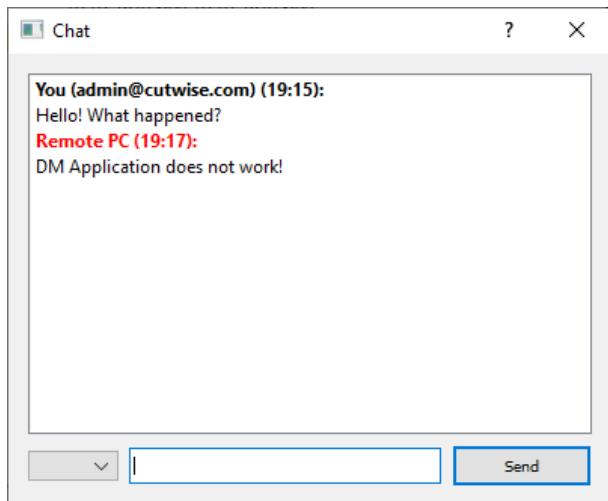
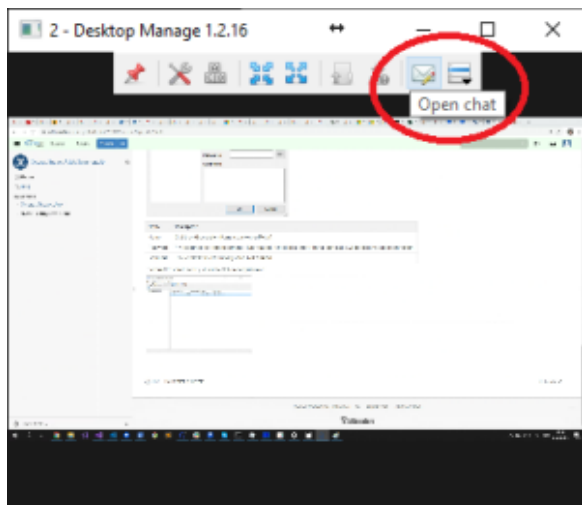
To connect to stored record just double click on computer row:



Chat feature

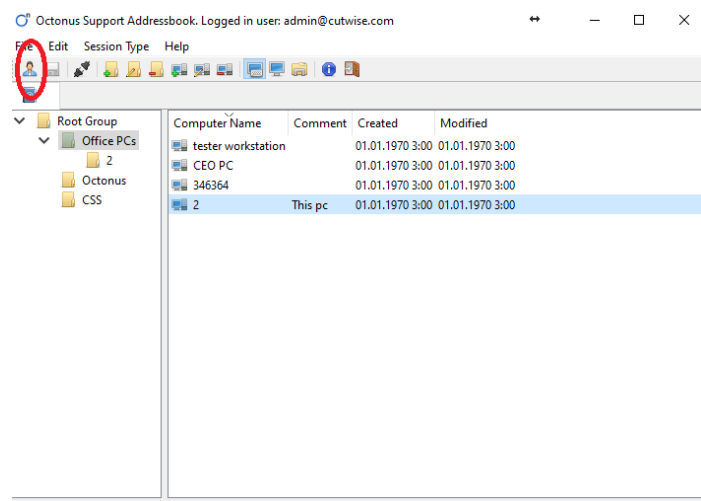
You can use text chat to talk with workstation user you connected to.

To open chat click on chat icon in the HUD of remote desktop window:

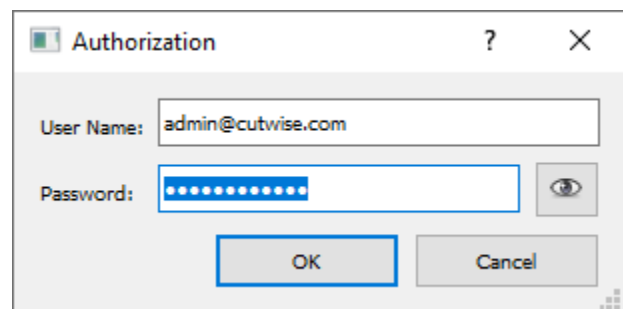


You can use authentication so remote user can see who you are. This is necessary then Octonus Support Client are used in customer support cases.

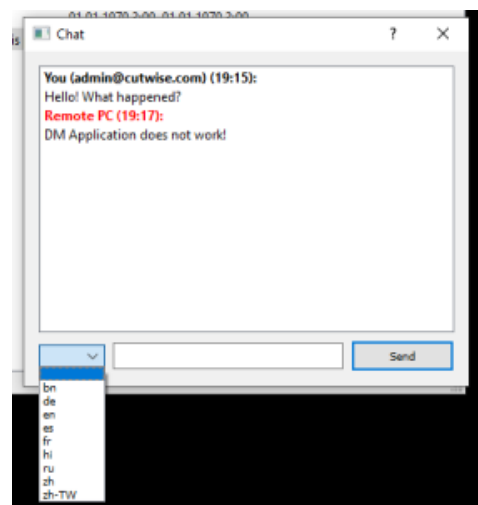
To authenticate yourself you need to login, to login press user button in the toolbar of Address Book Window:



Enter login provided by Octonus:



Then you authenticated you can use translate to your native language - just choose language in drop-down list:



Chat

You (admin@cutwise.com) (19:15):
হ্যালো! কি হলো?
Remote PC (19:17):
ডিএম অ্যাপ্লিকেশন কাজ করে না!

bn

Send