

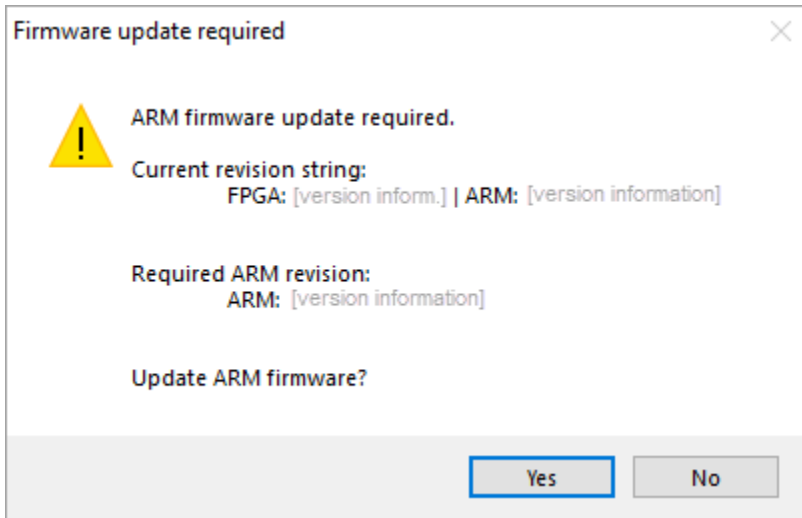
Firmware update required

On this page:

- 1 [Description](#)
- 2 [Possible Reasons](#)
- 3 [How to Solve](#)

Description

On starting the system, the message is displayed:



Possible Reasons

The version of your board FPGA and/or ARM components is not in correspondence with one required by the system.

How to Solve

Accept the update by clicking **Yes**. This will update the components of your board.

If you select **No** then the system will start without firmware update but problems with the hardware detection and functioning may occur.