

# Label Printing

Label printing functionality is designed to print labels on DYMO printers. It was tested on DYMO LabelWriter 320 and 450 models.

Requirements:

- 54mm size paper and can print on both continuous paper and labels. Genuine DYMO paper is not required.
- Using paper size less than 54mm will crop label reports.

On this page:

1

Setting Up a Printer

2

Printing Labels

2.1

Error Messages

2.2

Report Example

3

Settings

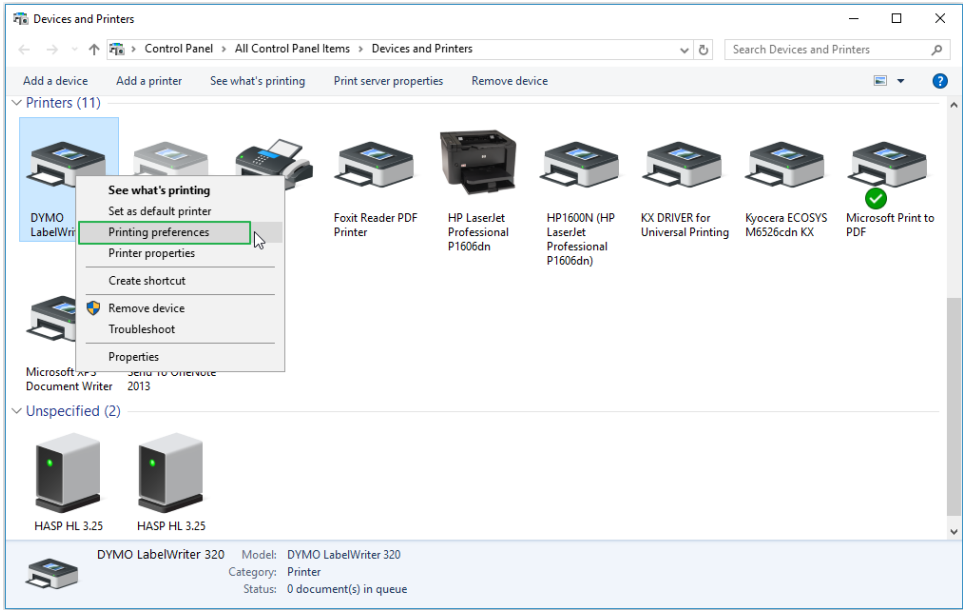
4

Related Pages

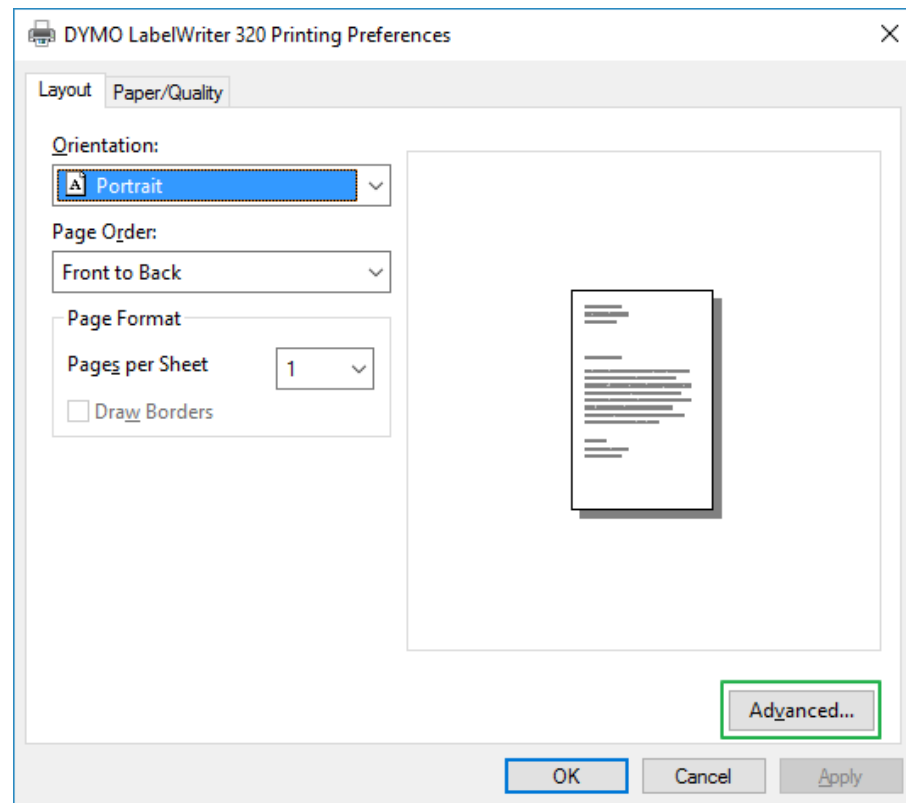
## Setting Up a Printer

1. Install drivers for your printer model from the official DYMO [site](#).
2. Set paper size in printer properties

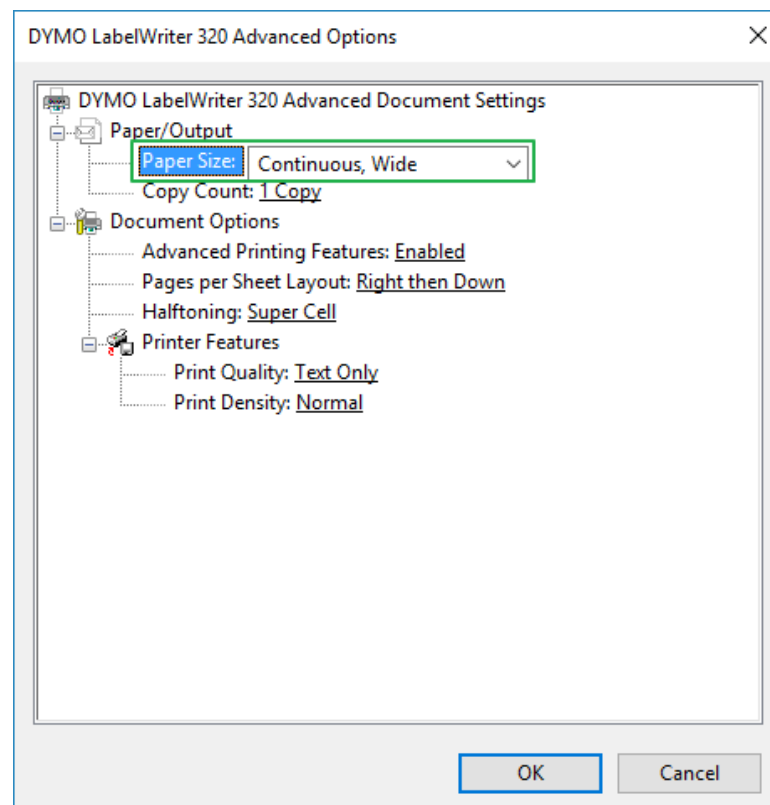
a. Navigate to DYMO printer preferences under Control Panel Devices and Printers.



- b. In preferences select **Advanced**.

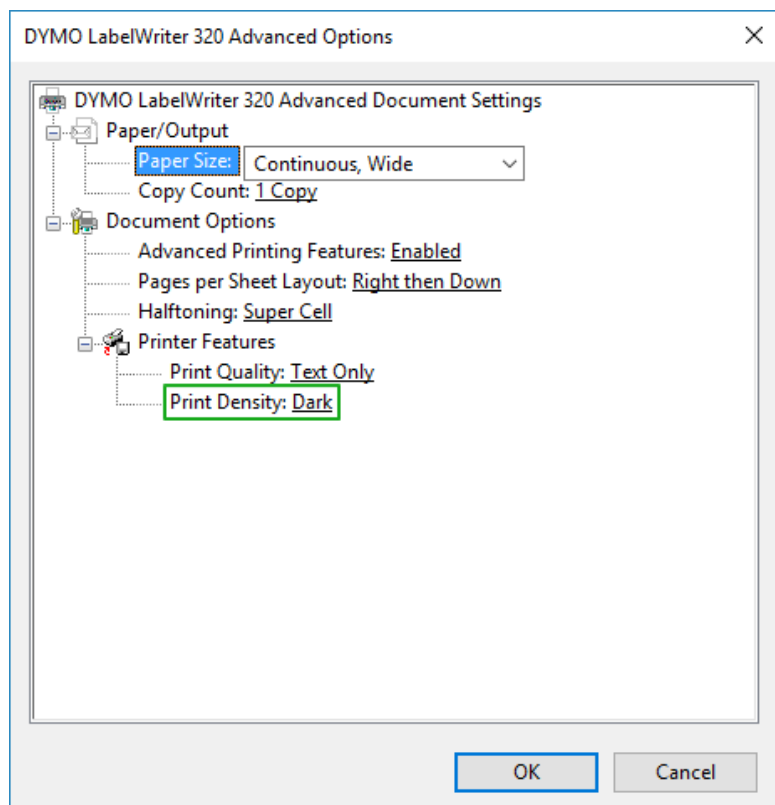



c. In advanced options select paper size.




To use continuous paper, you must set paper size to "Continuous, Wide".

d. To improve printing quality of Label Reports, set Print Density setting to "Dark"



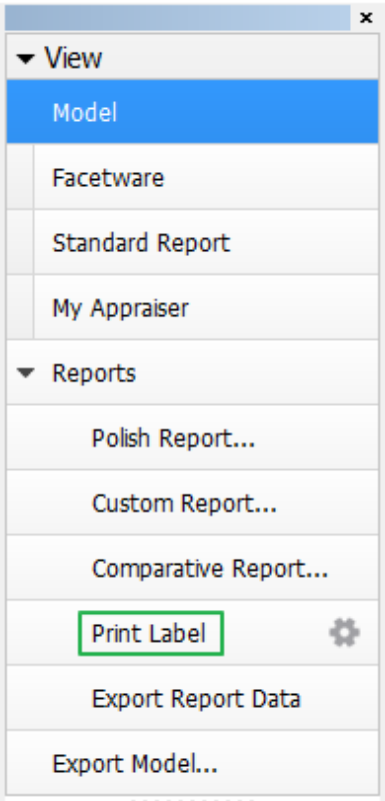
 Please reboot your computer for these changes to take effect.

 If you are still having trouble with printing of Label reports after the above steps, please in Advanced options select "30252 Address" paper size, click OK, then click Apply. And please repeat these steps for "Continuous, Wide" paper size.

3. You can find out how to load a printer with paper in printer's User Guide available on the official DYMO site.  
Note that some non-genuine DYMO labels and continuous paper can't fit label spool spindle. In this case you can just put a paper roll inside a printer without placing a roll on a spindle.
4. To improve printing quality of Label Reports, set Print Density feature to "Dark" in the described above DYMO printer preferences dialog (Control Panel Devices and PrintersPrinting preferencesAdvanced).

## Printing Labels

To print a label, press **Print Label** on the right panel.



Label report for selected model (solution or scan) will be printed.  
If anything goes wrong, an error message will be displayed instead.

### Error Messages

The possible error messages and their meanings are:

Message	Meaning
Error printing - label printer not found	DYMO printer is not installed.
Error printing - printer is offline	DYMO printer is installed but turned off.
Error printing - generic error	Some other error.

### Report Example

Print Label Settings

Printer:  
DYMO LabelWriter 450  
Ready

Cutting:  
Brilliant

Template:  
LABEL\_REPORT\_FOR\_BRILLIANT.HTML  
LABEL\_REPORT\_FOR\_ANY\_CUT.HTML

Reference Line parameters

Reference Line parameters documentation

Enhanced precision: 0 digits

Print

Preview

OK

Cancel

Stone ID: 20001\_0001\_2.42ct.mmd\_Oval\_C32P24\_Shifted\_NBT\_Rt1p5\_Sq2p5\_sample

Brilliant

14.07.2020 15:07

HPO11+

Parameter	Avg	Min	Max	Dev	Cut	Sym
Diameter, mm	7.899	7.867	7.907	0.25 %		EX
Pav. angle, °	40.36	40.49	40.64	0.15	EX	EX
Crown angle, °	36.03	36.01	36.05	0.04	EX	EX
Girdle bezel, %	0.209 mm	2.64 %	2.64	2.64	0.00	EX EX
Table, %	4.692 mm	59.40 %	59.36	59.44	0.08	EX EX
Total height, %	4.750 mm	60.14 %	-	-	-	-
Crown height, %	1.167 mm	14.78 %	14.78	14.78	0.00	- EX
Pav. height, %	3.374 mm	42.72 %	42.72	42.72	0.00	- EX
Star, %	54.90	-	-	-	-	EX
Pav. half, %	77.07	77.06	77.07	0.01	EX	EX
G-C off, %	0.11 ± 0.10	G-T off, %	0.00 ± 0.08	T-C off, %	0.11 ± 0.12	
Reference Line parameters						
Table allowance	0.00 mm		Incline	0.00 °		
Marking for Crown, mm	CB before	1.17	CB after	1.17		
Marking for Pav., mm	PB before	1.38	PB after	1.38		
Total weight, ct	1.80				EX	EX

40.49°

40.58°

40.58°

40.64°

40.58°

40.49°

40.51°

40.51°

40.58°

40.58°

36.01°

36.05°

36.01°

36.05°

36.05°

36.01°

36.05°

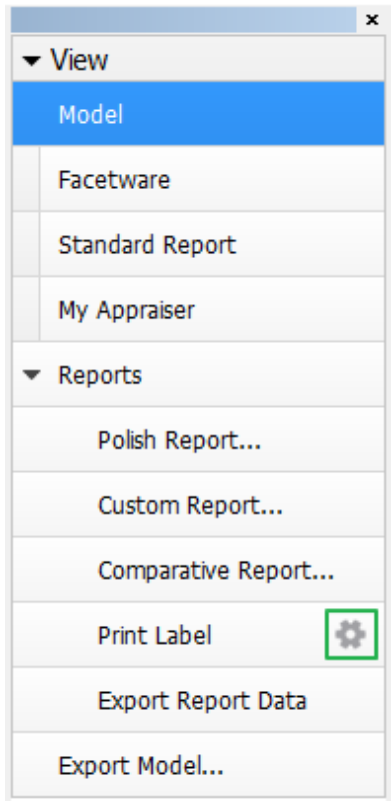
36.01°

36.05°

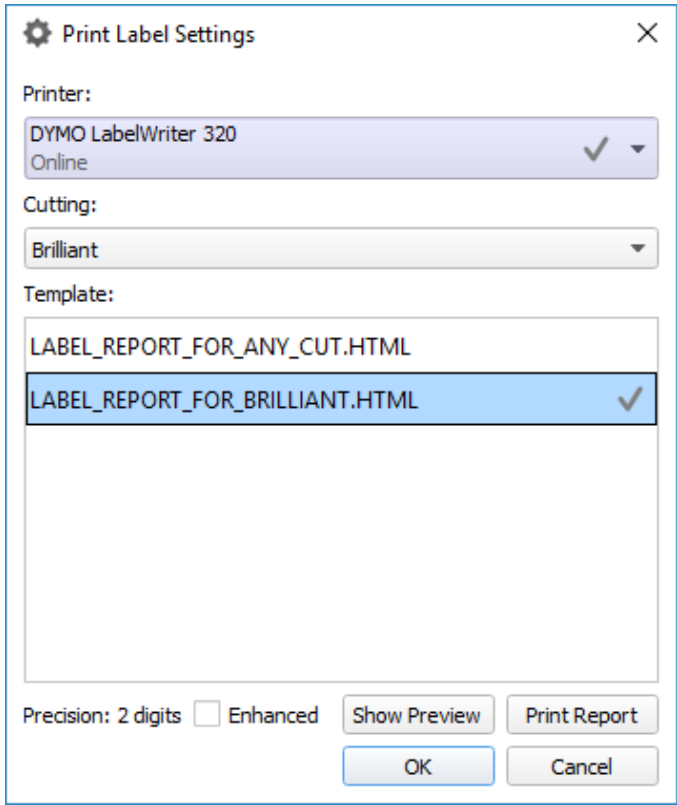
36.05°

### Settings

To set up label report printing settings, click the cogwheel icon next to Print Label on the right panel:



A printing settings dialog will appear:



Here you can:

1. Select printer on which the label reports will be printed. Currently selected printer is marked with grey circle to the right of the printer name. Label printers are shown on blue background.
2. Select template that will be used to print label report. Template is selected separately for each cutting type. Cutting type is determined automatically, but you can override it using the **Cutting type** combo box. Currently selected template is marked with grey circle to the right of the template name.
3. Set higher precision using the **Enhanced** check box.
4. Print report with selected settings by pressing the **Print Report** button.
5. Show a preview of a report with selected settings by pressing the **Show preview** button.  
You can see an example of a preview below:

Print Label Settings

Printer:

DYMO LabelWriter 320

Online

Cutting:

Brilliant

Template:

LABEL\_REPORT\_FOR\_ANY\_CUT.HTML

LABEL\_REPORT\_FOR\_BRILLIANT.HTML

Precision: 2 digits☐ Enhanced

Hide Preview

Print Report

OK

Cancel

Parameter	Avg	Min	Max	Dev
Diameter	5.524	5.507	5.541	0.033
Crn angle	35.58	35.51	35.64	0.14
Crn hgt	15.45	15.45	15.45	0.01
Star %	57.45	57.45	57.45	0.00
Pav angle	40.74	40.49	41.06	0.56
Pav dpth	43.09	43.08	43.09	0.01
Pav halv %	77.51	77.50	77.52	0.03
Girdle %	3.83	3.83	3.84	0.02
Table %	56.86	56.72	57.00	0.28
Star ang	23.89	23.89	23.89	0.00

Culet %	0.00
Tot. hgt %	62.37
Tot. hgt mm	3.446
Weight ct	0.65
G-C off %	0.44 ± 0.13
G-T off %	0.00 ± 0.11
T-C off %	0.44 ± 0.14

Brilliant

diamond\_00073\_brilliant

09.03.2017 17:39

-

+

100%

You can zoom preview in and out by pressing the + and - buttons and by using mouse wheel. Pressing the **100%** button will show the preview in 100% zoom.

## Related Pages

- [Reference Lines Parameters](#)