

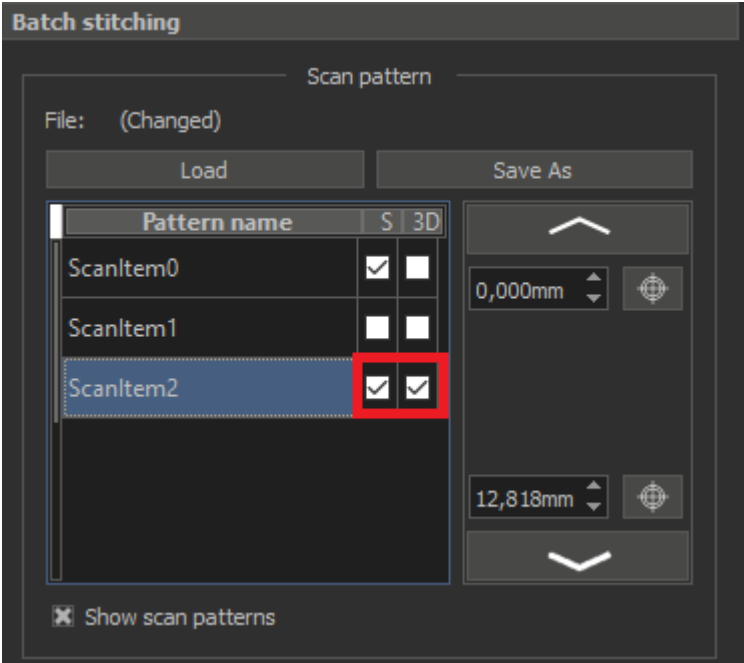
# DM Gold 1.0.13.18

Version is available here: Dropbox (OctoNus)\Download\DM\DM Gold\dm-gold-1.0.13.18.exe (<https://www.dropbox.com/s/d1crizo0y83akuf/dm-gold-1.0.13.18.exe?dl=0>)

## What's new?

### SFF stitched 3d model with texture

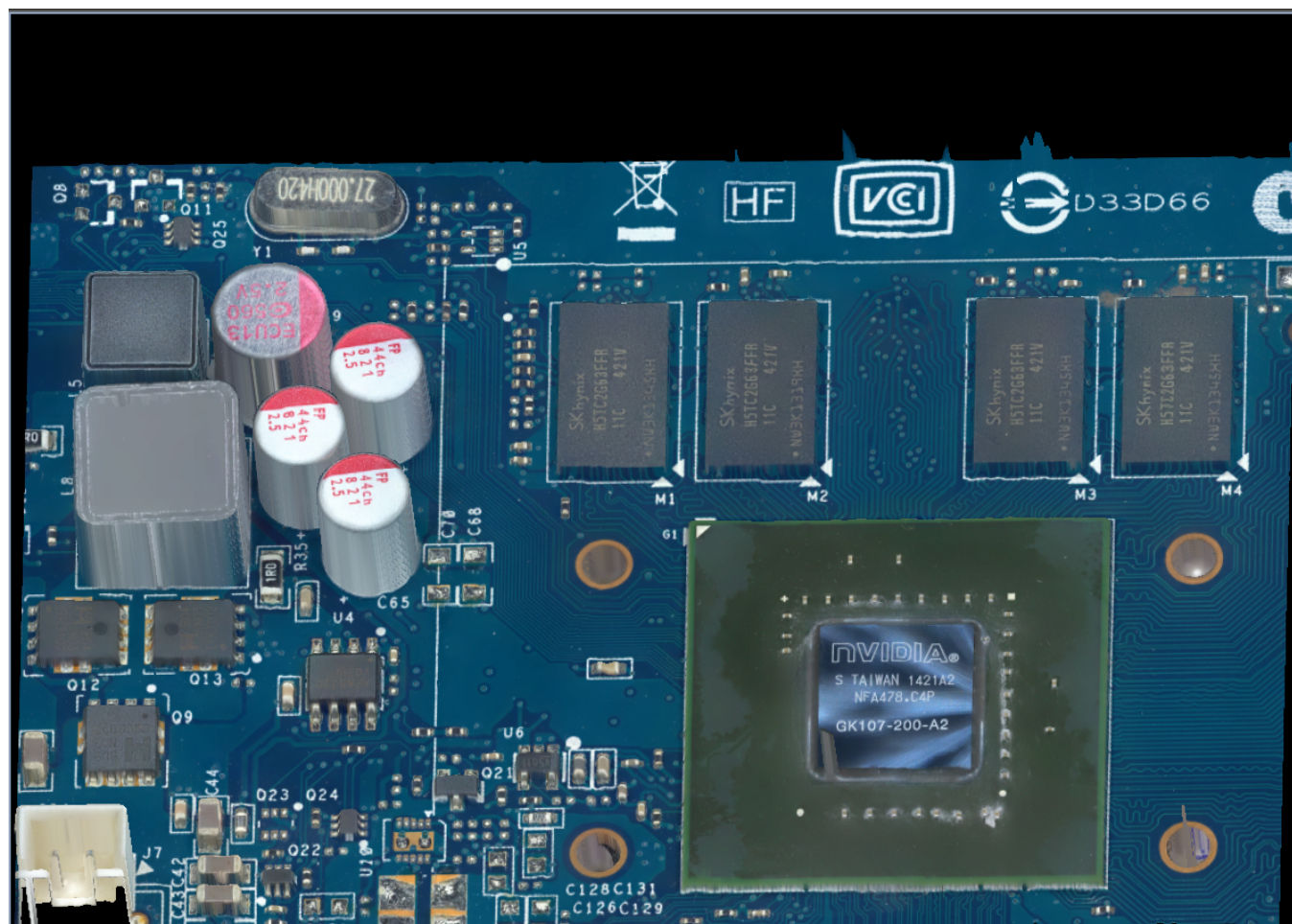
In a batch stitching plugin a 3D building option was added. This option is available only with enabled stacking option.



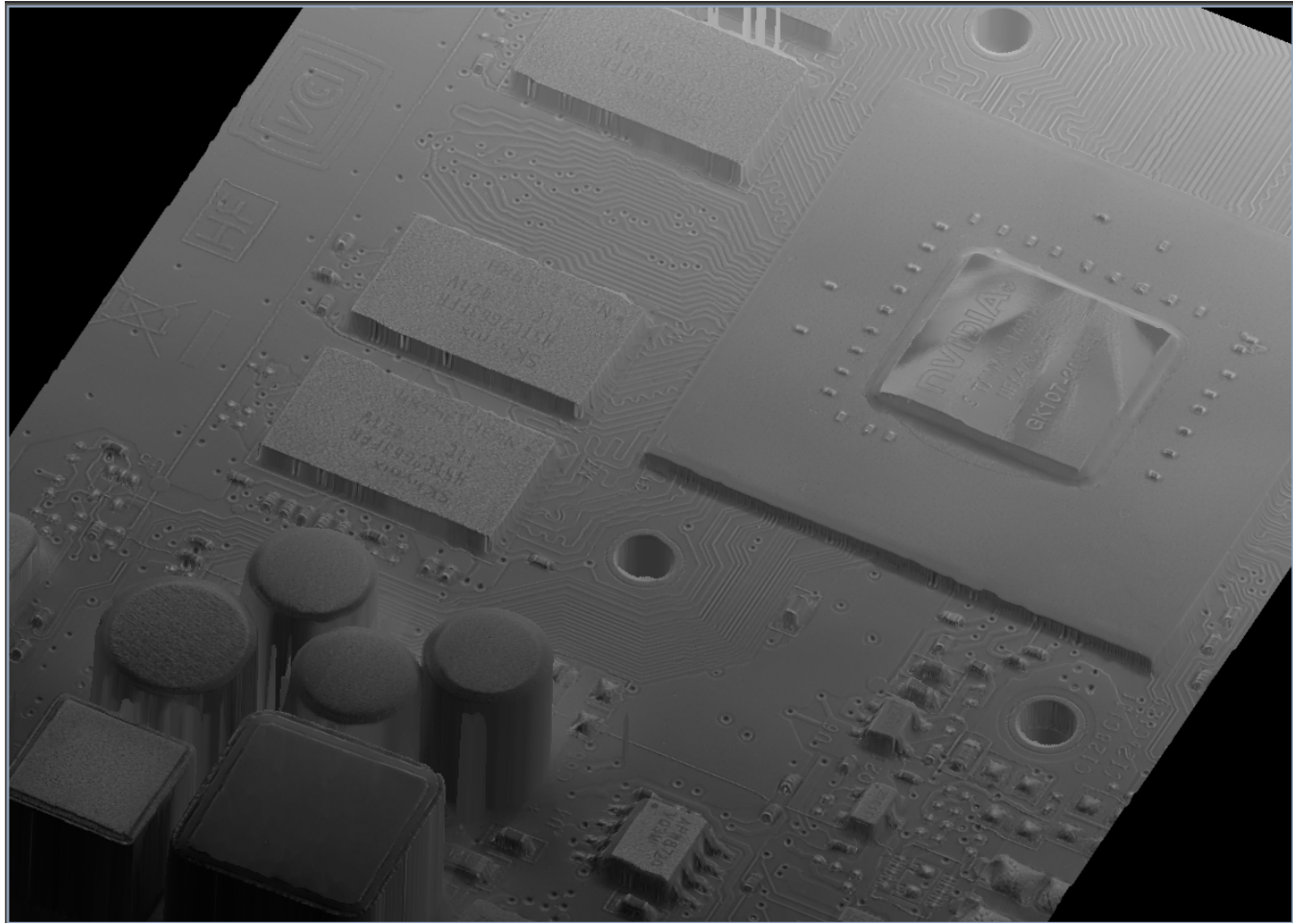
If 3D option is checked for the selected pattern - after scanning finish the result 3D model will be saved by the same path as all scanned images.

3D model file have the same name as image, but "\*.osgb" extention.

Below shown 2 examples for "Multilight" and "PS shape" lighting presets.



Multilight sample is available here: <https://www.dropbox.com/s/d6uij50o1qvyvci/2020-07-08-Multilight%20%28Top%20light%29.osgb?dl=0>

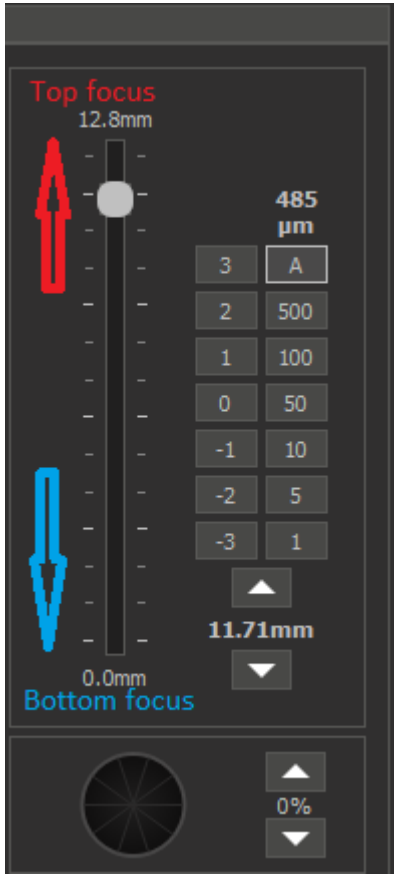


PS shape sample is available here:<https://www.dropbox.com/s/efvx9t77nkk51qk/2020-07-09-Multilight%20%28Top%20light%29%28PS-shape%29.osgb?dl=0>

### Focus controls behavior changes

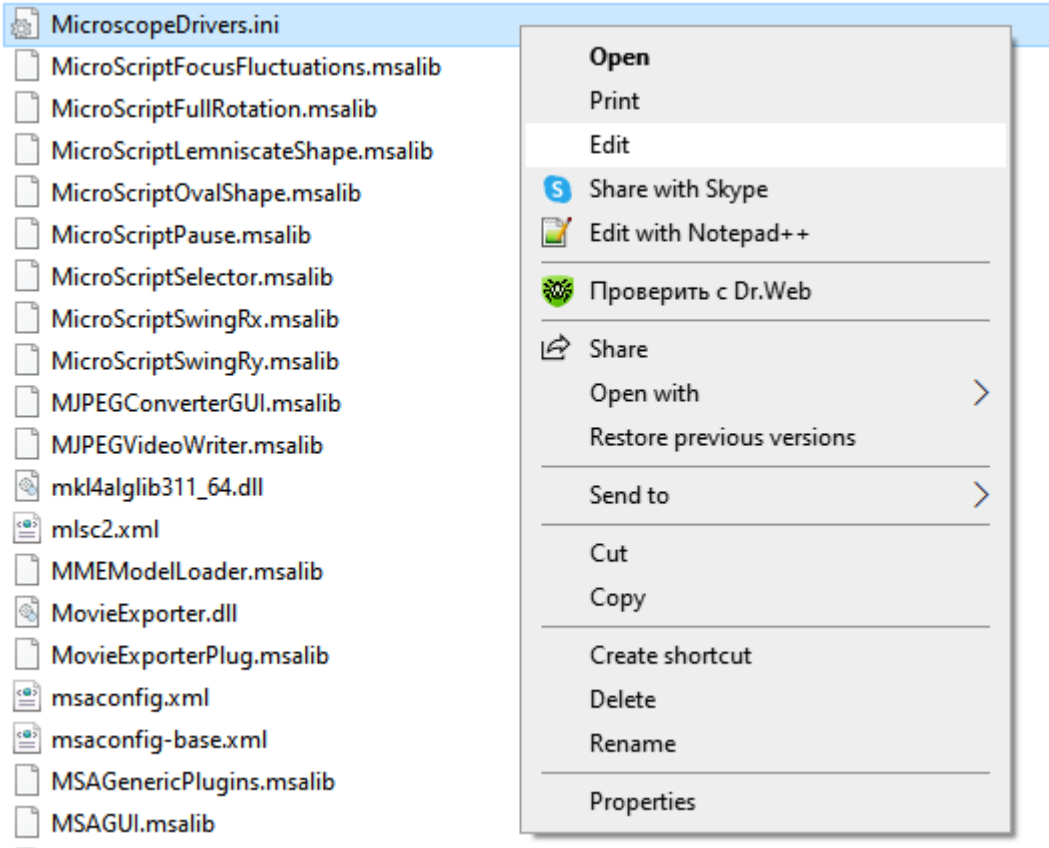
In DM Gold 1.0.12.16 the focus slider from the right panel in the Hardware plugins tab has another behavior.

Now the top position of the slider means focusing on the top object. The bottom position of the slider focuses on the bottom of the object.



Manual configuration changes

You should change the file "MicroscopeDrivers.ini" (compared to DM Gold 1.0.12.16). Open this file in Notepad application:



Change number "-0.001" to "0.001" in section "Tango stage" for the "Value3" string.

```
Device= Engine Microscope
Table: Main
BeginData
    Loglevel= Debug
    Version= Union
    BoardCount= 2
    Board1= MultiLight
    Board2= Stage

    ; Tango stage
    Value1= IndicatorX Stage.Y /Convert 0 0.001 0
    Value2= IndicatorY Stage.X /Convert 0 0.001 0
    Value3= Z Stage.Z /Convert 0 -0.001 0

    LightControl= 0
    MagnetControl= 0
EndData

LogLevel= Debug

Table: Multilight
BeginData
    Version= MultiLightMBox2
    Data0= Multilight /SettingsXML "mlsc2.xml" settings
EndData

Table: Stage
BeginData
    Version= Tango
    Port= COM3
    Baud= 115200
    AutoInit= Yes
; AlwaysInit= X Y
    InitScript= "TangoInit.txt"
    Data0= X
    Data1= Y
    Data2= Z
EndData

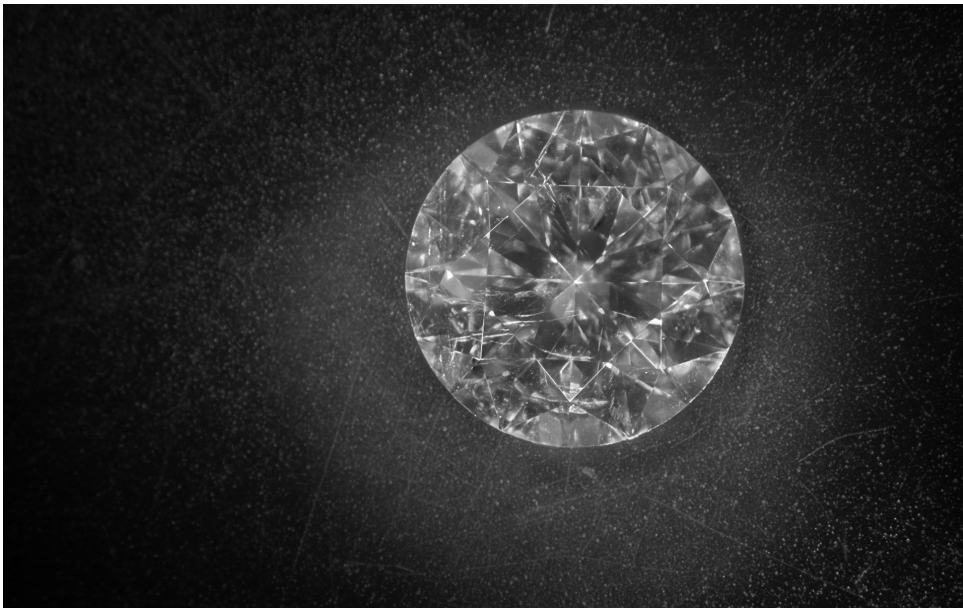
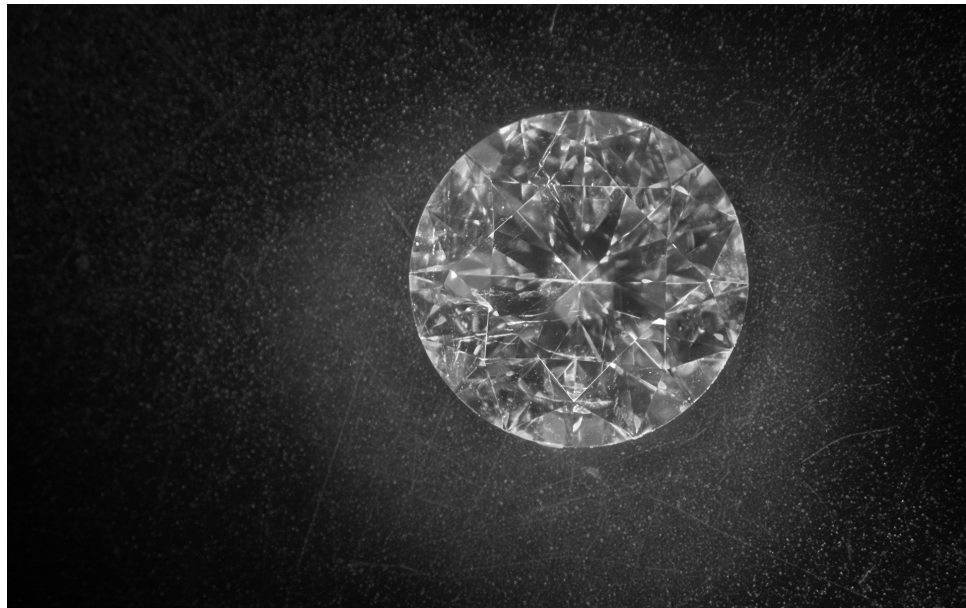
End
EndDevice
```

New Multilight option for DScope ML Cheap Upgrade

In this release a new option **Multilight DScope params [GPU]** as multilight algorithm have been added. This algorithm has optimized parameters for DScope ML Cheap Upgrade system, the most important improvement will be for 10x magnification, here you can see the example of improvement (several pseudo small glare parts are removed):

Usual EF - with details + sharpness [GPU]	Multilight DScope params [GPU]
---	--------------------------------





To use this option, please, choose it in multilight panel (you may also add it as a preset by pressing "+"):

