

Adjusting Interface

You can adjust some elements of the HP Carbon interface for your everyday needs and tasks.

On this page:

1


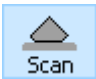
Configurable Set of Columns in Solution List


2

Scene Model and Photos View - Show Grid Option

Configurable Set of Columns in Solution List

The set of displayed columns for the scan/solution list is configurable: you can select columns to be displayed/hidden and also change their order. The function is available for:

- The  mode, the **Plans & Scans** section.
- The  mode, the **Models** section.

-  **Notes:**
- The configuration for each mode is performed and stored separately.
 - The configuration is not available in the [Lock to Scan](#) mode.

Allocation solutions

Plans & Scans

★ ★ ★ ★ ★

Compare

Standard Report

#	Cutting	Price	Mass	Cl	Yield	Clarity	DZ	Gr	Cut	Sym	Br
<input checked="" type="checkbox"/>	Imported model		1.0192					UNK-Poor	UNK-Poor	UNK-Poor	
<input type="checkbox"/>	1	Brilliant 5733\$	0.9858	96.15%	VS1	H		EX	EX	EX	
<input type="checkbox"/>	2	Brilliant 5558\$	0.9564	93.21%	VS1	H		EX	EX	EX	
<input type="checkbox"/>	3	Brilliant 5324\$	0.9134	89.28%	VS1	H		EX	EX	EX	

Scan Info

Imported model

Cutting: - -

Price: - -

Discount: - -

PPC: - -

Model Mass: 1.0192 ct

Clarity: - -

DZ Color:

Grade: - -

Inclusions

Active Appraiser and Pricelist

Appraiser: MyRound | GIA Facetware + MyRound

Profile: MyRound_Profile1

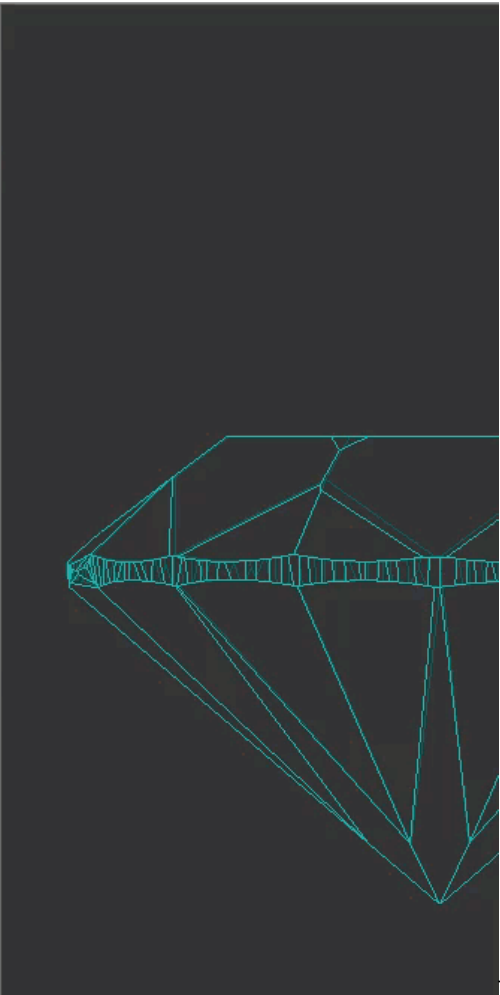
Pricelist: LEXUS_PRICE_09MARCH_2012

Select algorithm and diamonds for allocation.

Algorithm 13. Single-M

Cutting list Brilliant

grade of 1st diam: EX



To customize columns, right-click the name of any column, then in the context menu select/clear checkboxes for your columns. For advanced configuration (several columns at once, change order), in the context menu, click **Details**. The **Adjust columns** dialog is displayed. Here you can select/deselect several columns at once and change their order by drag-and-drop.

In the **Adjust columns** dialog, you can find 3 separate groups:

1. Core information - you cannot hide or move these columns.
2. Main information - you can hide, reorder is possible only within the group, columns from group "3" will never be able to go before these ones.
3. Other information - you can hide and reorder within the group.

Adjust columns

X

Columns:

☒ Show/hide model or solution

☒ # (Model Name / Solution Number)

☒ Label Color

☐ Cutting

☒ Clarity Status

☒ Price

☐ Model Color

☒ Mass (Model Mass)

☒ Sym (Symmetry Grade)

☒ Alloc (Allocation Algorithm)

☐ Yield

☒ Clarity

☒ DZ (Diamond Color)

☐ Sym-O (Optical Symmetry)

☒ Gr (Final Grade)

☒ Cut (Cut Grade)

☐ Br (Brightness metric)

1

2

3

i

Drag & Drop items to rearrange columns

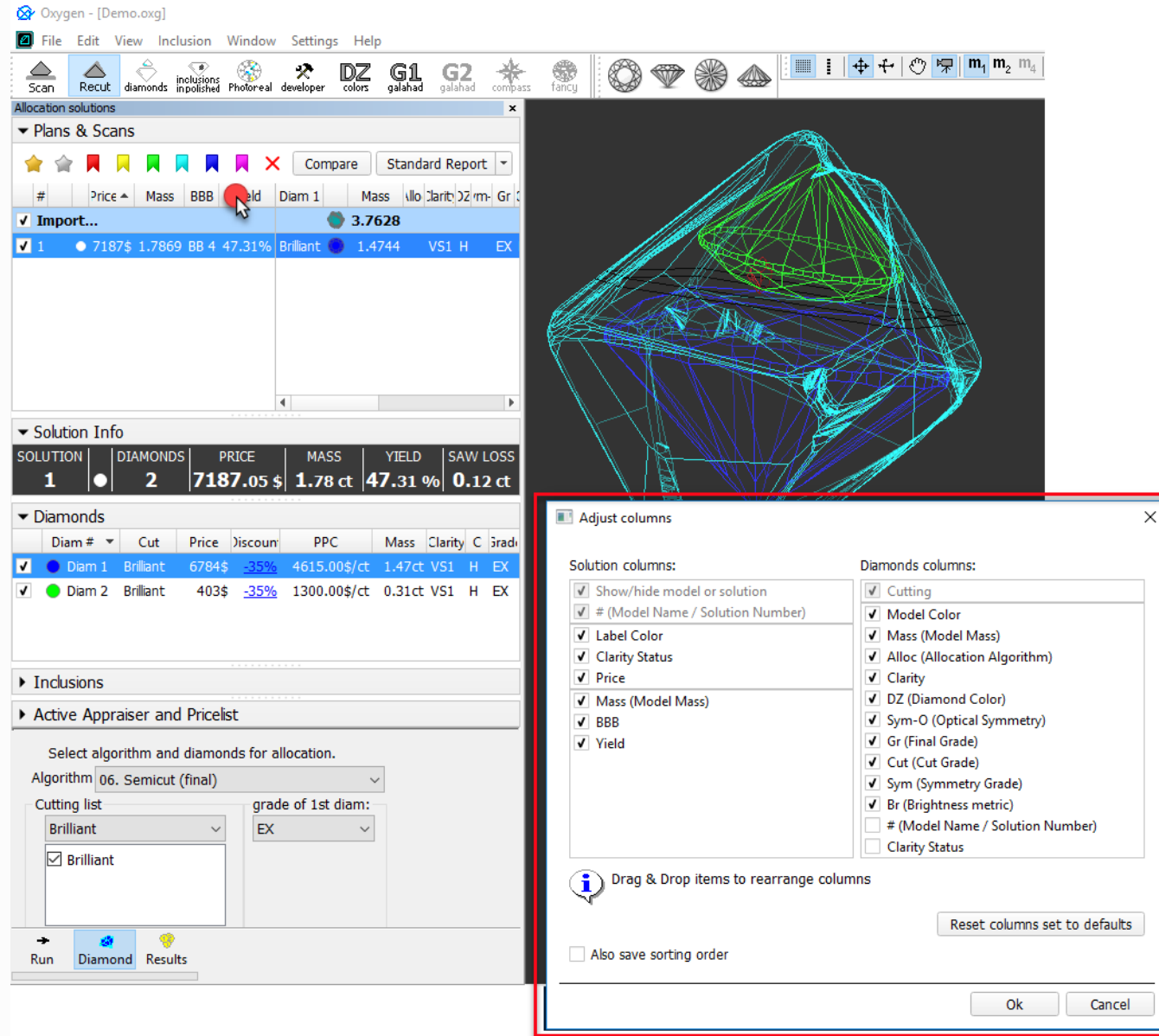
Reset columns set to defaults

☐ Also save sorting order

Ok

Cancel

 Note that for the **Multiple Diamonds in One Solution** mode, the **Adjust columns** dialog differs: you can customize both solution and diamonds columns.



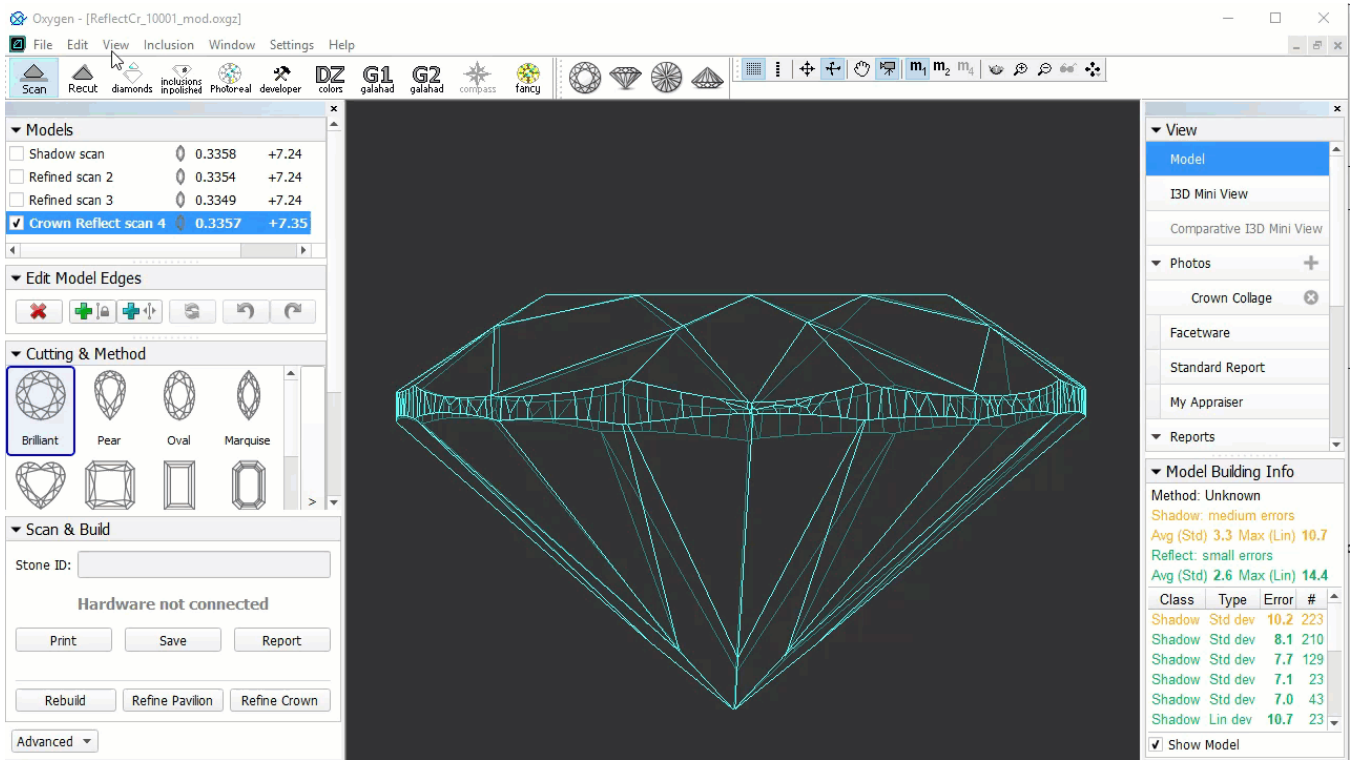
To restore the default set of columns in the default order, click **Reset columns set to defaults**.

Besides setting the column set, you may also save sorting order you currently use (the **Also save sorting order** option).

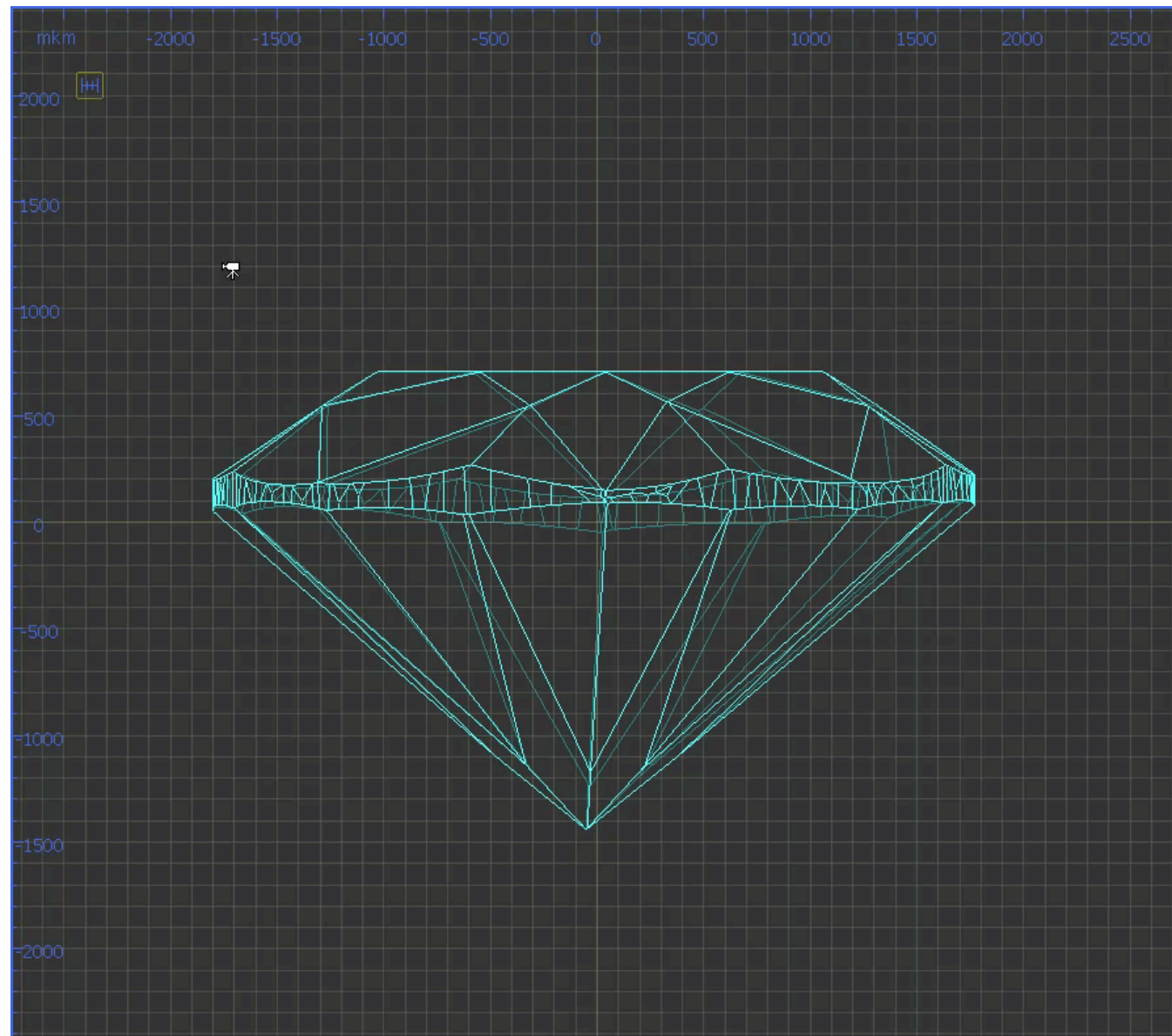
Also save sorting order	
Selected	Not Selected
<p>Sorting you use when closing the current project will be used for the next project you open.</p> <p>Note Once selected, the option stays active in spite of restarting the program or opening the next projects.</p>	<p>For the next project you open, its own saved sorting will be used.</p> <p>Notes</p> <ul style="list-style-type: none"> • The sorting for the project is saved (or updated) when you apply File > Save operation to the project itself. • As soon as you deselect the option, the project immediately switches to its own sorting.


Scene Model and Photos View - Show Grid Option

For the Scene in Model or Photos view, you can show the grid. To enable the grid, set Scene to the Model or Photos view, then from the main menu, select **View > Show Grid**. To disable the grid, clear the **Show Grid** checkbox. As you zoom in/out, the grid step and units (mkm, mm) adjust to the current zoom level.



With the grid enabled, you can click  to display vertical and horizontal measurements (mm) of the projection of the displayed model in its current position.



Click  again to hide measurements