

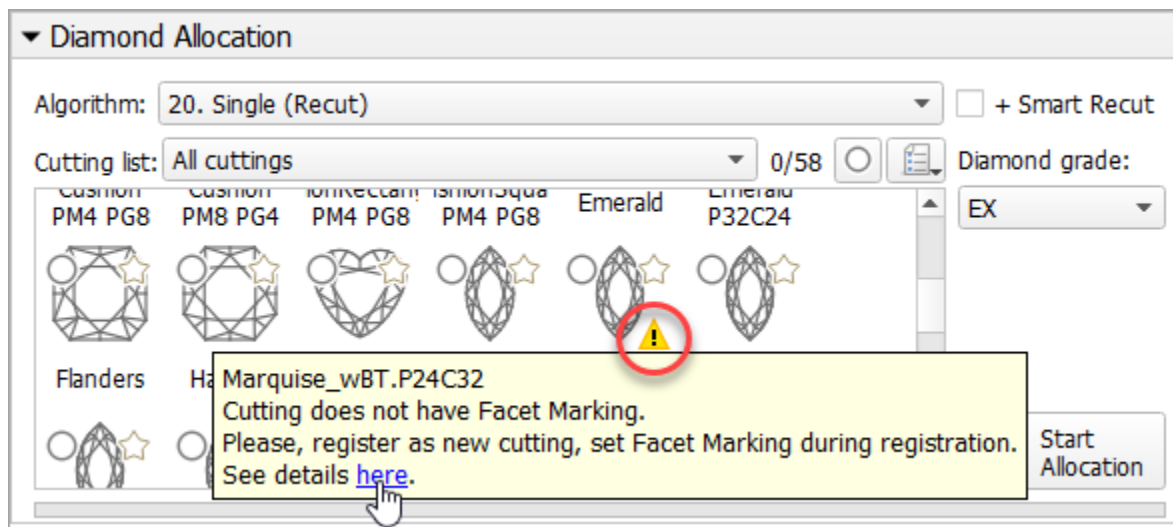
# Cutting Does Not Have Facet Marking

## On this page:

- 1 [Description](#)
- 2 [Possible Reasons](#)
- 3 [How to Solve](#)
  - 3.1 [Re-Registering Your Cutting as New](#)
  - 3.2 [Deleting Cutting](#)
  - 3.3 [Revert to Old Name](#)
- 4 [Related Pages](#)

## Description

In **Recut** mode, in the **Cutting list** section, your cutting is marked as the one that does not have facet marking. On mouseover, the following message is displayed: "Cutting does not have Facet Marking. Please, register as new cutting, set Facet Marking during registration."



## Possible Reasons

Your cutting does not have Facet Marking.

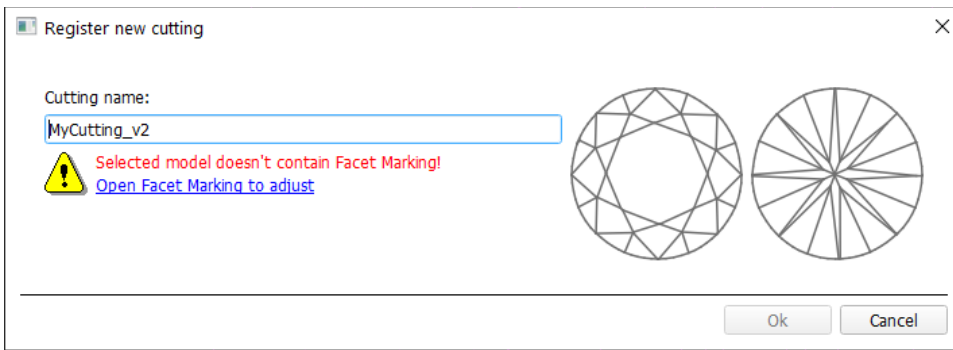
## How to Solve

### Re-Registering Your Cutting as New

A facet marking can be added to the cutting during its registration. So, to add a facet marking to an existing cutting, you need to re-register it and add a facet marking during registration.

To re-register an existing cutting:

1. Recommended: to empty your solution list, click **File > New**.
2. Use the **Recut** mode.
3. In the **Cutting list**, right-click your cutting and then from the context menu, select **Show Allocation forms in solution list**. Allocation forms are displayed in the solution list.
4. In the solution list, right-click the base form (cutting itself) and then from the context menu, select **Register as new cutting...** The **Register new cutting** dialog is displayed.



5. In the **Register new cutting** dialog, to specify a facet marking, click **Open Facet Marking to adjust**. The **Facet Marking** dialog is displayed.
6. In the **Facet Marking** dialog, define a facet marking.
7. Click **Apply**. Now cutting being registered has a facet marking.
8. Close the **Facet Marking** dialog.
9. Set your new cutting name. Note that the system does not allow two cuttings with the same names.
10. Click **Ok**.  
Your cutting is registered and displayed in the **Cutting list**, under **Client cuttings**. Your new cutting has facet marking.
11. Delete the cutting you started from as described in the sections below.
12. If you want to revert your new cutting to the old name, re-register it again with renaming to old name. Details can be found in the sections below.

## Deleting Cutting

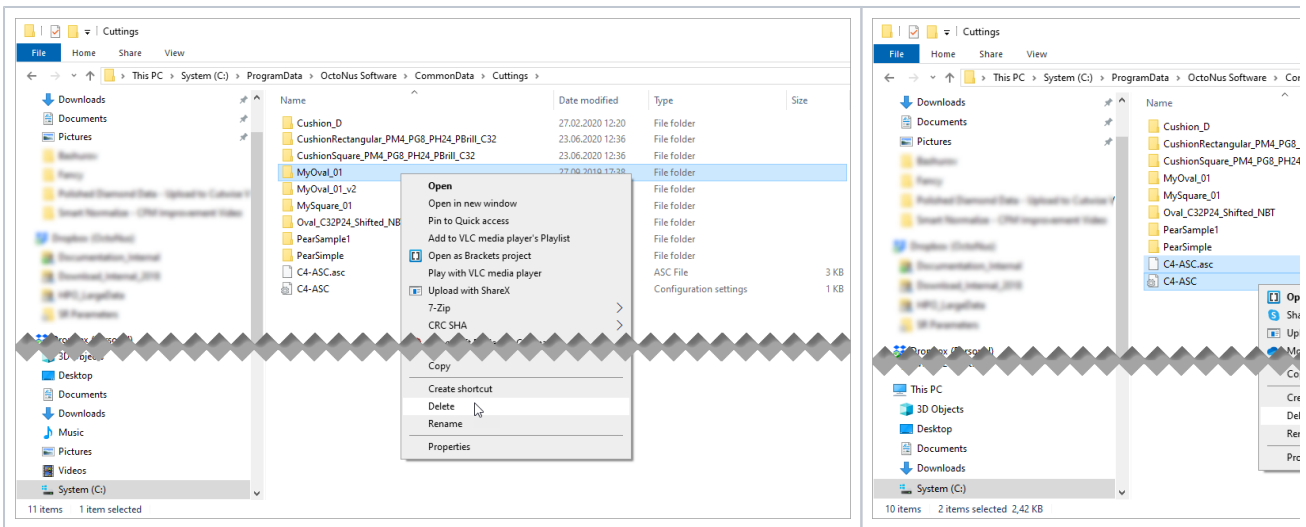
To avoid cutting duplication, after registering the cutting as the new one, you can delete the old one.

To delete a cutting:

1. In the **Cutting list**, find your cutting and copy its name. Tip: Use **Show Allocation forms in solution list > Register as new cutting...** then copy from **Cutting name** and close dialog without finishing.
2. Close HP Carbon.
3. In your file manager, go to the appropriate folder.

...\\ProgramData\\OctoNus Software\\CommonData\\Cuttings

4. Find by previously copied name and then **delete** one of the following:
  - a. ASC file of an ASCII cutting and related INI.
  - b. Folder with DMC cutting and related data.



5. Re-start HP Carbon. Deleted cutting is not presented in the system anymore.

## Revert to Old Name

As the system does not allow two cuttings with the same names, re-registering + deletion described above creates cutting with the new name. For example:

1. Your "Cutting A" does not have a facet marking.
2. You re-register it, add a facet marking, and name a new copy "Cutting A-v.2".
3. Then you delete initial "Cutting A".

4. In your previously created HP Carbon projects, you may have a number of solutions with Cutting = "Cutting A". As cutting with this name is not presented in the system now, the appraisers will not be able to display parameter values and grades for these solutions.
5. You may have other reasons to wish to keep the old name.
6. To revert to the old name, re-register your "Cutting A-v.2" once again, changing the name back to "Cutting A".
7. Then delete "Cutting A-v.2".  
Now you have "Cutting A" with the facet marking.

## Related Pages

- [Facet types](#)
- [In-house cut workflow](#)
- [Video | AnyCut Workflow - Main Steps](#)