

Manual Editing of Reflect Contours

You can manually edit automatically created reflect contours.

On this page:

1

[Accessing Editing Tool](#)

2

[Using Editing Tool](#)

3


[Finish and Re-Start Editing](#)

Accessing Editing Tool

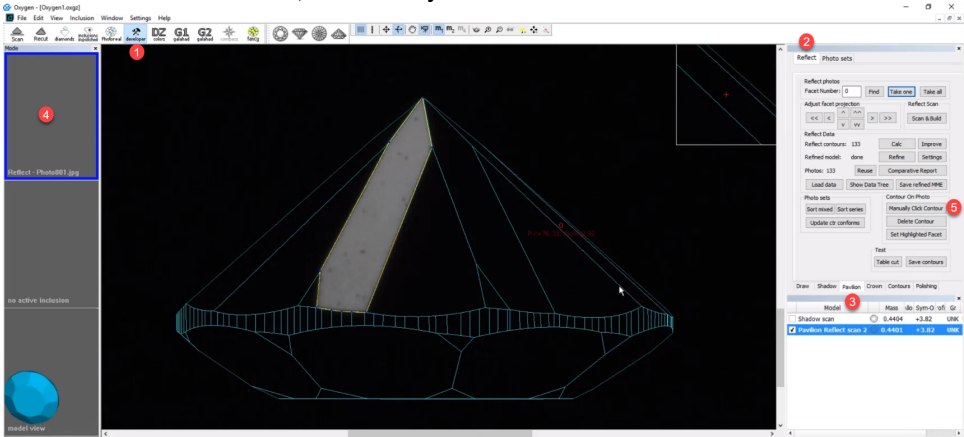
- Open project, containing your Reflect Scan model.
- On the top panel, click

developer

Developer. Developer mode is activated.
- To open the Reflect photo set, on the right panel, use the **Photo sets** tab.
- Click **Load Sets**. Select the folder containing your Reflect photo set, then click **OK**.
- Switch to your facet photo.
- Switch to the **Reflect** tab, **Pavilion** sub-tab.

 From the **Pavilion** sub-tab, you can edit both pavilion and crown contours.

- In the **Contour on Photo** section, click **Manually Click Contour**.



- The editing mode is enabled.
- Use the editing tool as described in the sections below.
- When you are done, on the right panel, click **Finish**.
- To save changes, save the project via **File > Save**.

Using Editing Tool

When the editing tool is active:

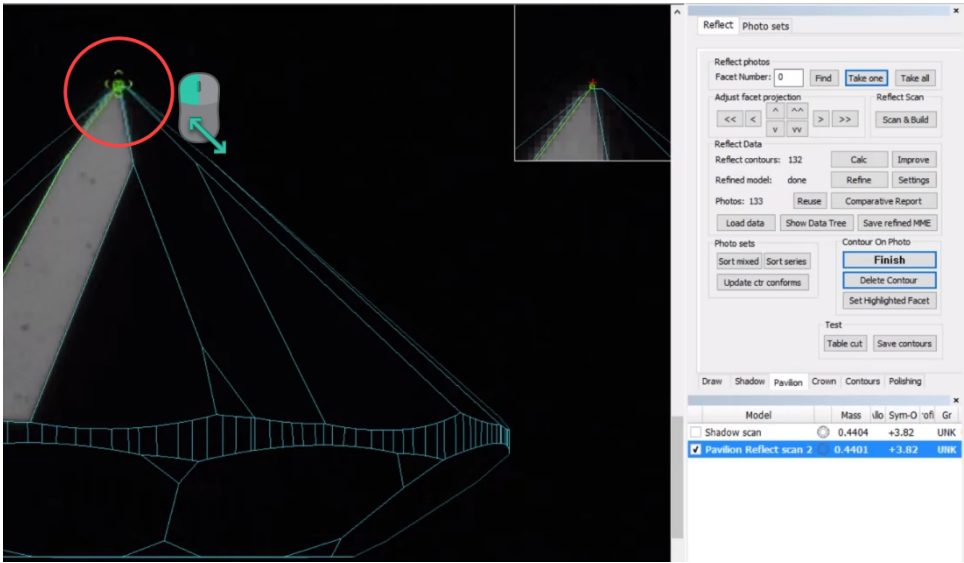
- To add a point,

CLICK

 in the Scene. Edges between points are added automatically.
- To move an existing point, mouse over it; when the point is targeted,

DRAG AND DROP

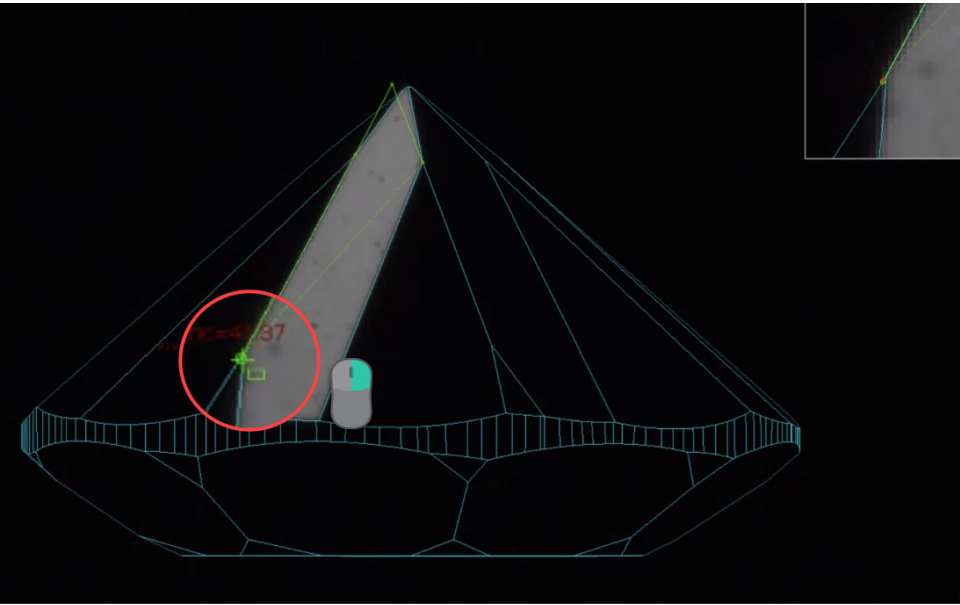
.



Note You can also move point using the cursor keys. To do so, mouse over the point; when the point is targeted, use ← → ↑ ↓ on the keyboard.

- To close the contour, do one of the following:

- CLICK the starting point



- Press CTRL+ENTER.
 - DOUBLE-CLICK. This will add one more point and close the contour.

For the closed contour you are still able to:

- Add points (on the edge or anywhere outside)
- Move existing points

You also can:

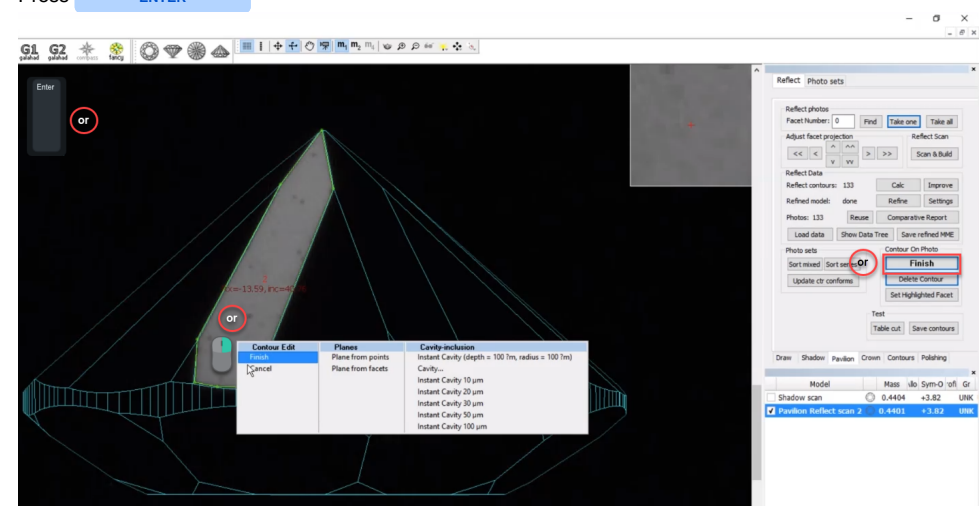
- Delete point by mouse over the point, then SHIFT+CLICK
- Delete edge by mouse over the edge, then SHIFT+CLICK
- Restore deleted edge by mouse over the area where it was, then SHIFT+CLICK again

Finish and Re-Start Editing

As soon as you have done the editing, do one of the following:

- On the right panel, click **Finish**.

- In the Scene, **RIGHT-CLICK** inside the contour, then from the context menu, select **Contour Edit > Finish**.
- Press **ENTER**



You can at any moment resume editing by clicking once again on the right panel, in the **Contour on Photo** section, the **Manually Click Contour** button.

i Do not forget to save your project via **File > Save**. Your edited contours will be saved along with the project.