

Inclusions

The system allows working with the inclusions in the polished diamond.

On this page:

- 1 [Access information about inclusions](#)
 - 1.1 [Filter inclusions with QC filter](#)
- 2 [Use inclusions statuses](#)
 - 2.1 [Green status](#)
 - 2.2 [Yellow status](#)
 - 2.3 [Red status](#)
 - 2.4 [Grey status](#)
- 3 [Clarity groups](#)
- 4 [Create inclusions manually](#)
- 5 [Create "sandwich" inclusions](#)
- 6 [Deleting inclusions](#)

Access information about inclusions

Information about inclusions, their positions, sizes, and shapes comes with the project file containing a model. The information itself is gotten by external tools.



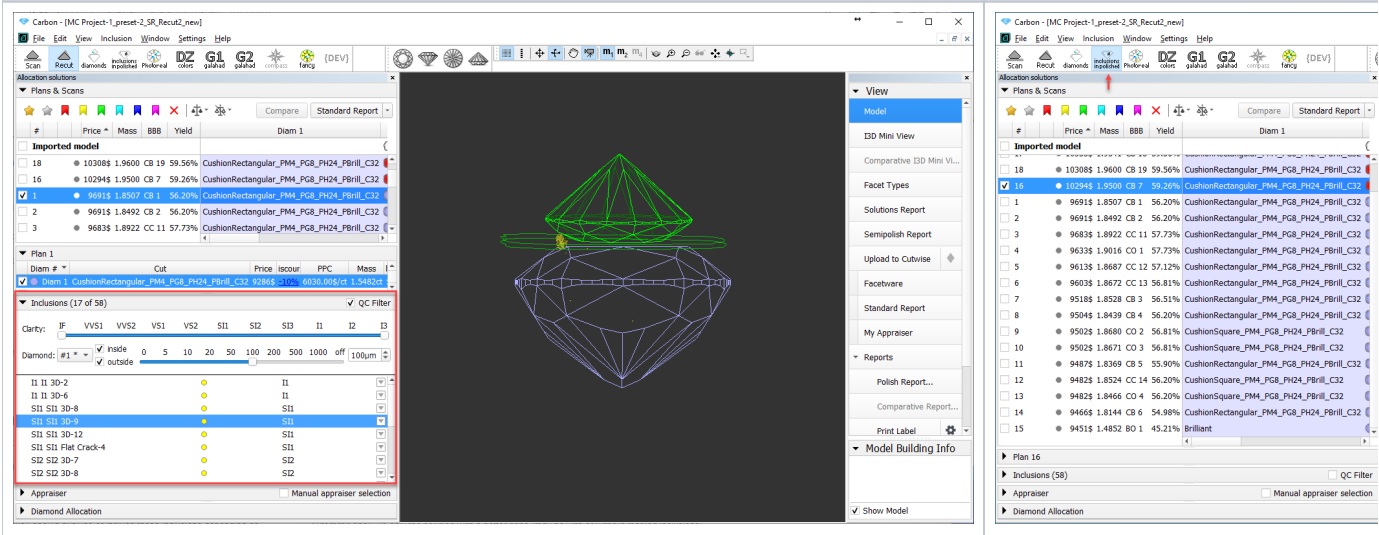
Note

Inclusions can also be created manually in the HP Oxygen system itself. See [Create inclusions manually](#) below.

To access information about inclusions, do one of the following:

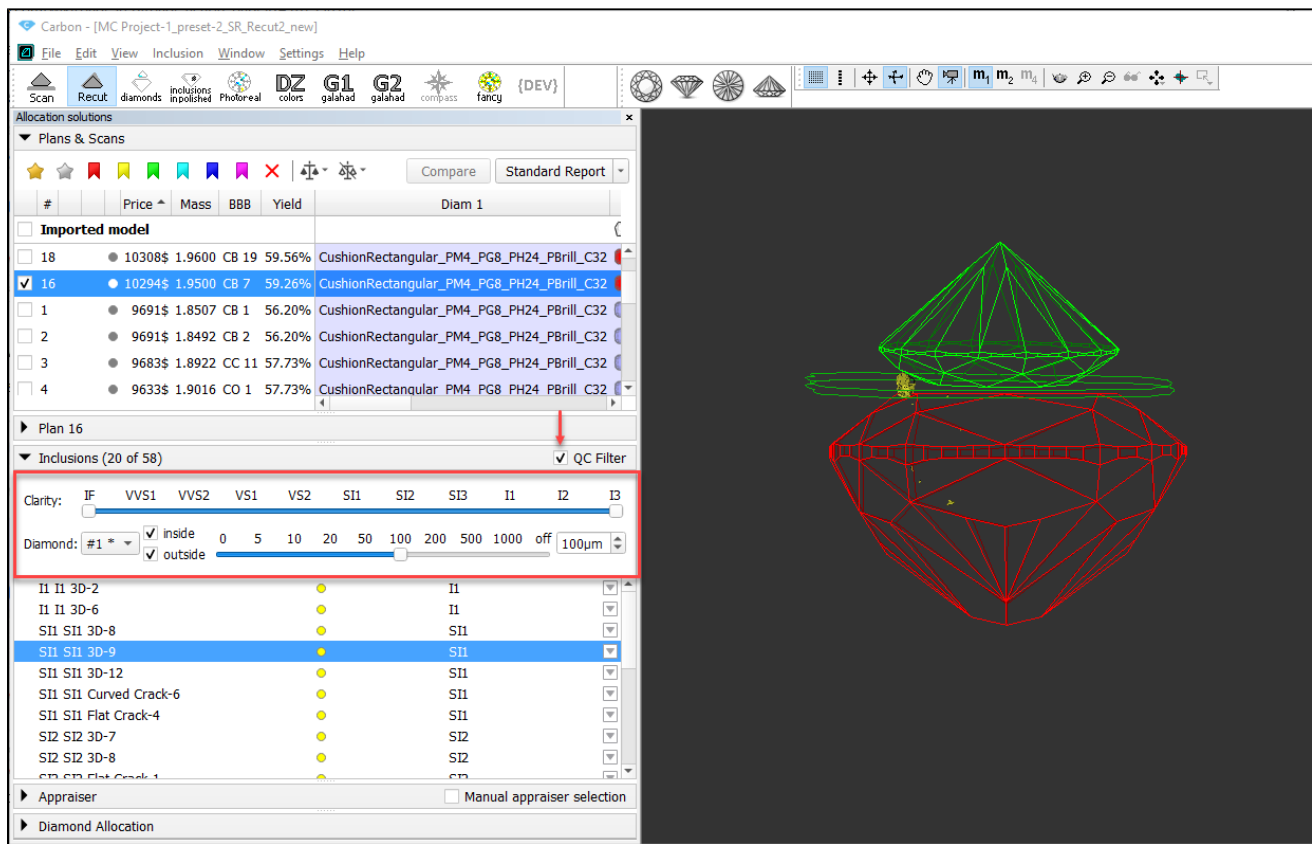
In the **Recut** mode, on the left panel, overview of the **Inclusions** section.

On the top panel, click  **Inclusions** in the left panel goes into **Plans & Scans** Mode



Filter inclusions with QC filter

You can filter inclusions visualization in Scene. This can be done via the **Inclusions** panel, its **QC Filter (Quality Control Filter)**.



Activate the **QC Mode** button to start using specified filters. De-activate it - all solution inclusions will be displayed without filtering.

The **QC Panel** applies filters to the model inclusions, such as:

- **Clarity** select one or several clarity values from the list - only inclusions with the specified clarities will be displayed
- **Diamond** for multiple diamond solutions you can select only inclusions for the selected diamond will be displayed
- **Inside/Outside** check if to display inclusions inside, outside the diamond or both
- **Depth** of the area where to display the inclusions (works together with **Inside/Outside**) - use the slider or type in the value in μm

Filters utilize the AND logic, for example, if "Diamond 1", VS1 clarity, "inside" and 90 μm are selected, then only VS1 inclusions within 90 μm area inside Diamond 1 will be displayed.



Notes

- For now, the diamond filter cannot work with nonconvex models.
- Rarely, some filter combinations may cause the filter to fail, the system shows notification - try other parameters if so.

Use inclusions statuses

To change how inclusions affect algorithm work and produced solutions, you can change the statuses of the inclusions.

Status	Instructs an algorithm...	May be used for...
Green Status	"You should not do anything to include or exclude these inclusions".	Speeding up an algorithm work by marking the inclusions that you are sure do not affect the result (definitely will be outside or inside potential diamonds).
Yellow Status	"You should exclude or include these inclusions depending on condition".	Automatic show up only the solution with a better price (may be with or without marked inclusions).
Red Status	"You should exclude these inclusions".	Getting better clarity.
Grey Statuses	"These inclusions do not exist".	Getting maximum mass.

See the details in the sections below.

The default status of inclusion is set automatically due to its clarity group. The approximate correspondence is like following:

Clarity Group	Default Status
IF VVS1	Green
VVS2 VS1 VS2 SI1 SI2	Yellow
SI3 I1 I2 I3	Red

Green status

Specifying this status instructs the algorithm "You should not do anything to include or exclude these inclusions". May be used for speeding up an algorithm work by marking the inclusions that you are sure are not important.

Yellow status

Inclusions having this status may be included or not included in the solution.

The algorithm:

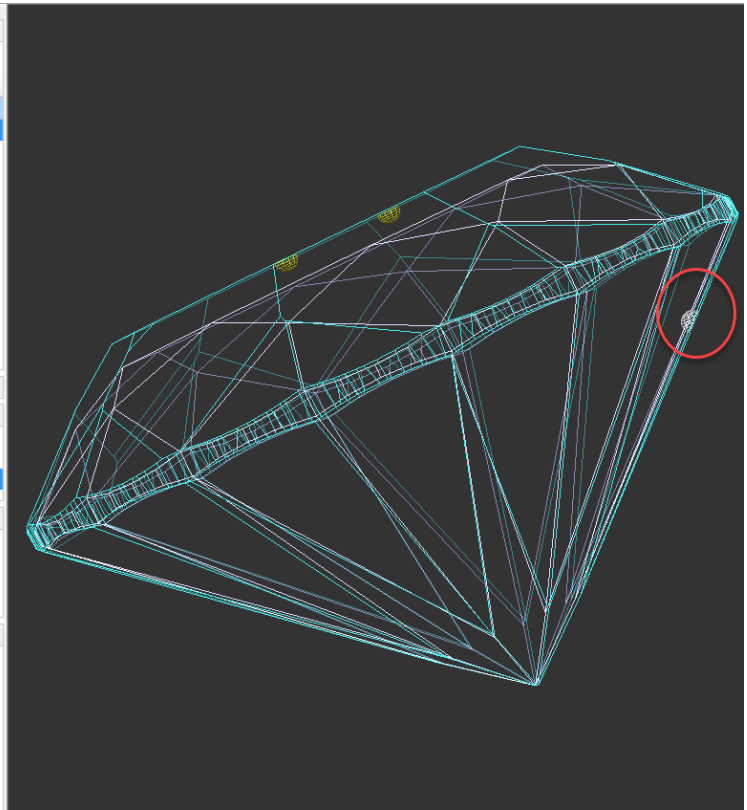
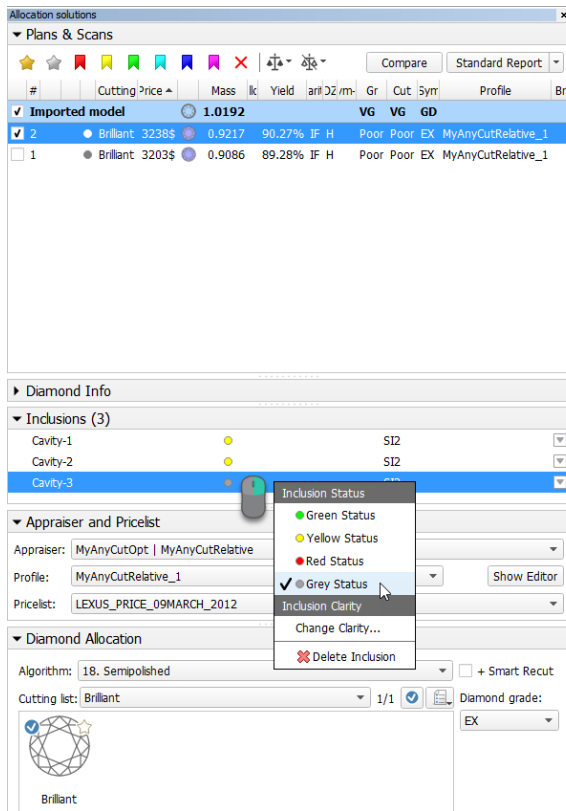
1. takes all the yellow inclusions of the worst clarity group, marks them as red and builds the solution which does not include these inclusions, estimates its price;
2. takes the same inclusions, marks them as green and builds the maximum mass solution that may have these inclusions inside, estimates its price;
3. compares prices;
4. selects only the solutions with a higher price;
5. makes one step up in the hierarchy of clarity groups and repeats steps 1-4 for it;
6. compares prices of previous and current clarity groups solutions;
7. shows only the solutions with a higher price.

Red status

Specifying this status instructs the algorithm "You should exclude these inclusions". May be used for getting better clarity.

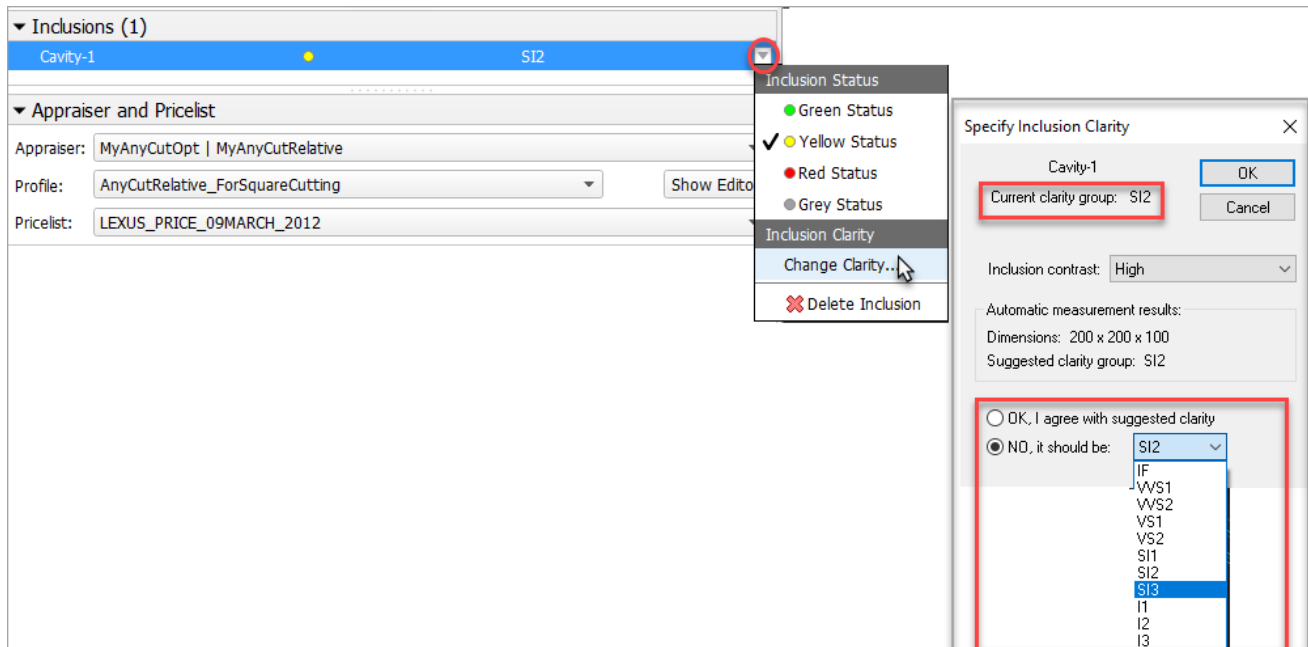
Grey status

Inclusions having this status will not be taken into account during allocation. The solutions are built as if these inclusions do not exist, they are still presented within the produced solutions and affect their price.

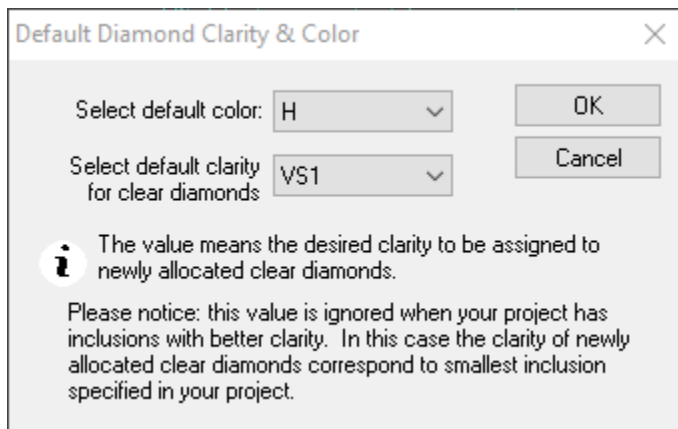


Clarity groups

The system automatically assigns the *clarity group* to every inclusion in accordance with the size of the inclusion. If necessary, you can change the clarity group of the inclusion manually.



Clarity groups of the inclusions define the final clarity of a stone. Note that there is a default clarity setting in the system, which describes the accuracy of the current observing tool (lens, microscope). It means "the clarity is this because with this observing tool we cannot see anything smaller".

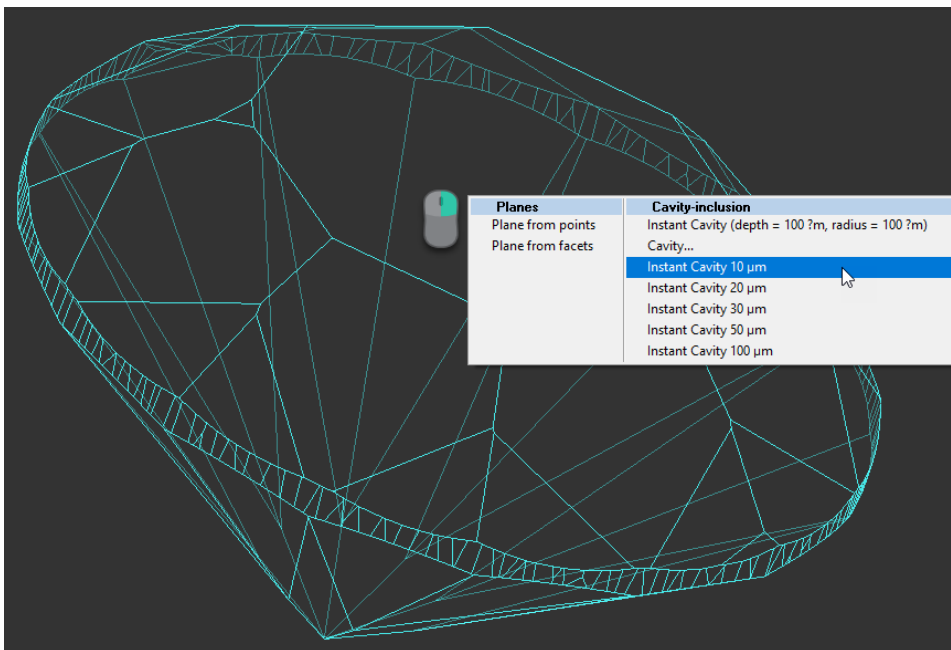


The setting is available from the main menu, **Settings > Default diamond clarity and color**.

Create inclusions manually

You can create inclusions manually in HPO:

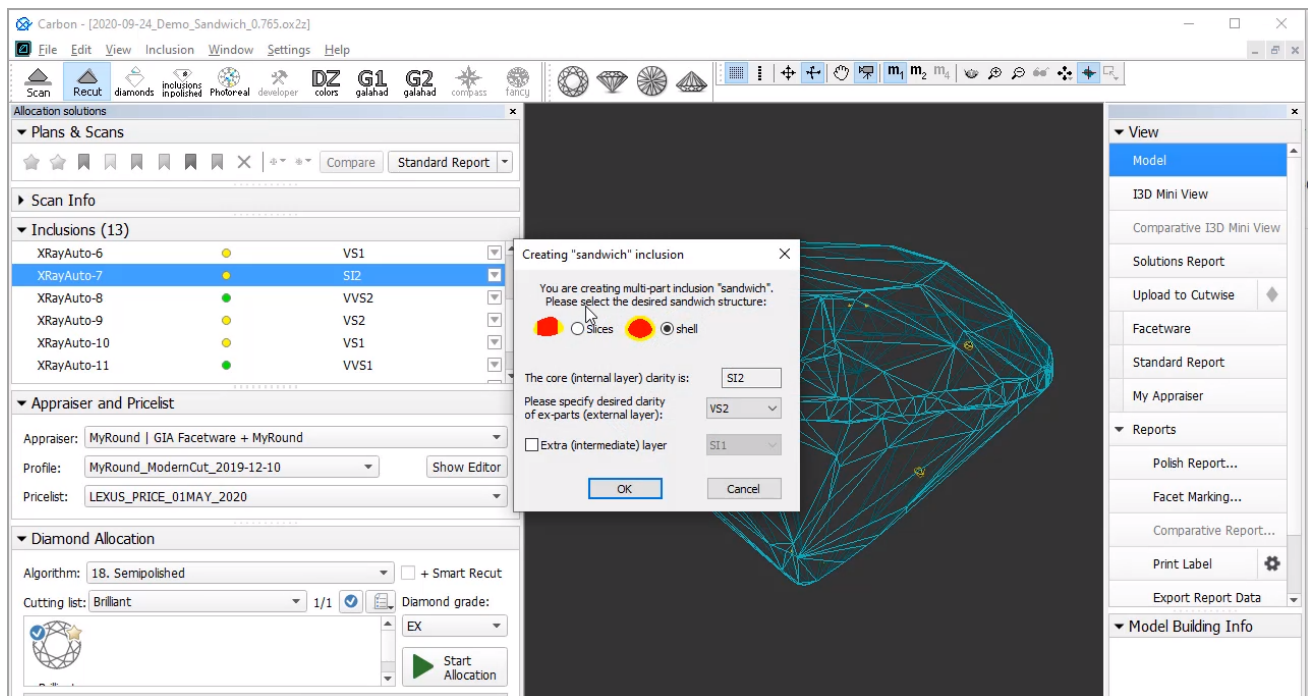
1. Use the **Recut** mode.
2. In the Scene, right-click the model at the position where you want to place a new inclusion.
3. From the context menu, select the appropriate inclusion option from the list.



The inclusion will be created.

Create "sandwich" inclusions

For the stones with inclusions, the system now supports the ability to increase in some cases the mass of the solution by specifying that **some part** of inclusion can be included in the future solution. This can be done by marking an inclusion as multi-part ("sandwich").



For a future "sandwich" inclusion you can specify:

- Desired structure: **Slices** (Recommended) or **Shell**.
- Desired clarity of the external layer compared to the internal layer clarity.
- Optionally - Extra (intermediate) layer presence and clarity.

To make an inclusion "sandwich":

1. In the **Recut** mode, access the **Inclusions** panel.
2. From the menu for your inclusion, select **Make Sandwich**. The **Creating "Sandwich" Inclusion** dialog is displayed.
3. Specify the "sandwich" options and then click **OK**. In the **Inclusions** panel, your inclusion will be split into the corresponding parts.
4. Run optimization with your new inclusions.

You can find some details in the video below:

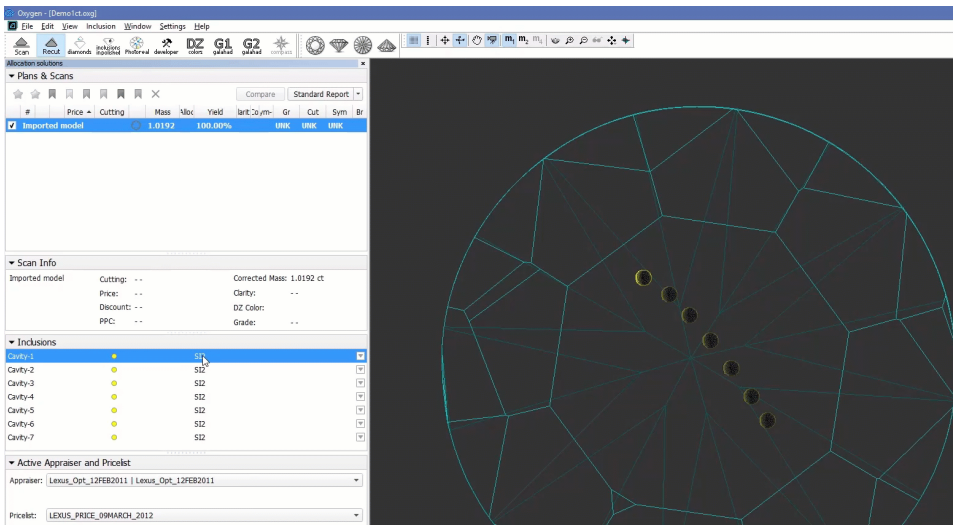
Video Increasing Mass - Using Sandwich Inclusions				
Published:	2020, October 16	Last Updated:	2020, October 16	v.2.0
Your browser does not support the HTML5 video element				
Video summary: <ul style="list-style-type: none"> • Sandwich Inclusion function allows increasing the mass of a solution without a decrease of its clarity • It splits an inclusion into layers • The external layer (shell) can be included in the solution thus it becomes bigger, increases the mass • The internal (core) continues to limit the solution boundaries, keeps the Clarity high • Big inclusions outside but close to the surface give the chance for using "Sandwich" • Appropriate inclusions can be searched using QC Panel 				
Video keywords: clarity, inclusion, sandwich, QC panel				
Published in:	Release Notes	2020-12-29 - HP Carbon 1.1.33		
	Documentation	Inclusions		
	Playlists	All Videos YouTube: HP Carbon		
	Also	As Separate Page On YouTube Specification		

Deleting inclusions

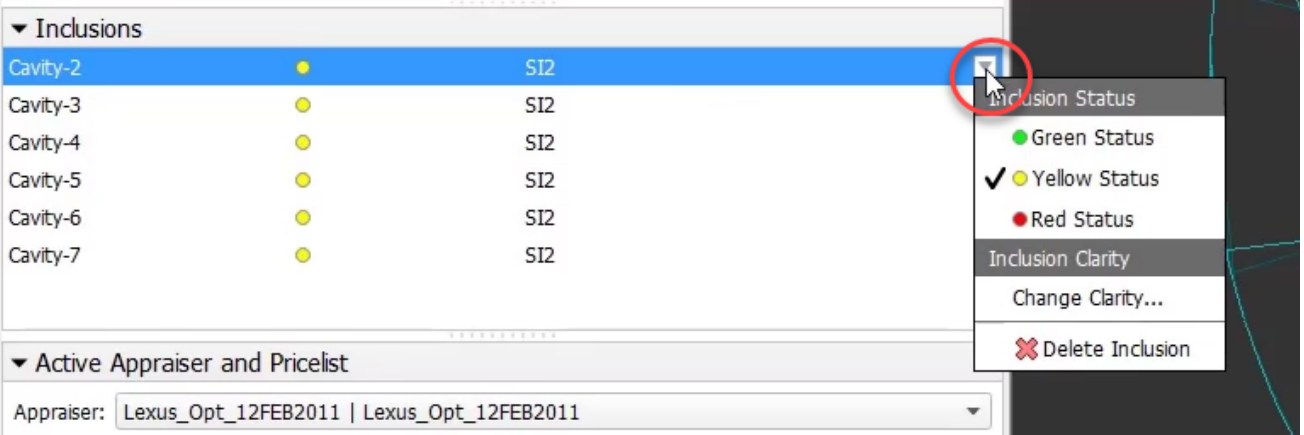
You can delete existing inclusions. This can be useful if some caverns have been added by mistake.

To delete the inclusion:

1. In the **Plans & Scans** mode, in the **Inclusions** section, right-click the inclusion you want to delete. The context menu is displayed.
2. From the context menu, select **Delete Inclusion**.



i Alternatively, you can delete inclusion using the pop-up menu.



You can delete several inclusions at once. To do so:

1. Select inclusions clicking their names holding the CTRL or SHIFT keys
2. Use the context or pop-up menu as described above.