

Import

You can import models into your current project.

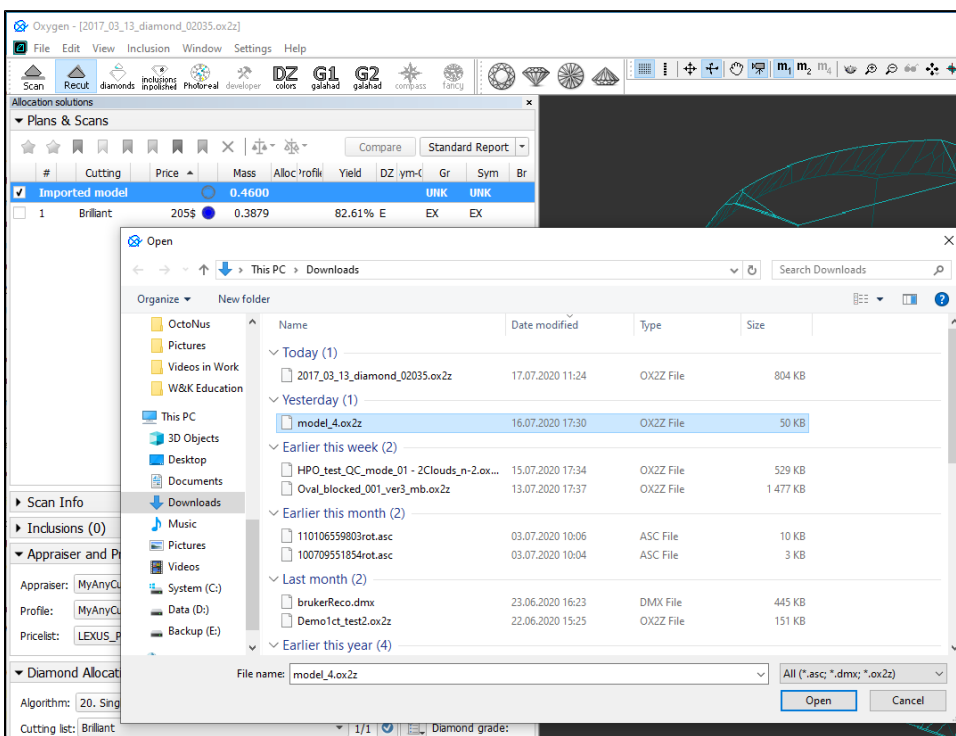
On this page:

- 1 [Importing Models from Files](#)
- 2 [Supported Formats](#)
 - 2.1 [List of Formats](#)
 - 2.2 [DMX - Some Details](#)
- 3 [Related Pages](#)

Importing Models from Files

To import a model:

1. Select **File > Import**. The import dialog is displayed.
2. Select file containing model to import.



3. Click **Open**. The **Model matching preview** dialog is displayed.
4. In the **Model matching preview** dialog, select matching options and then click **OK**. The additional model is added to the project.



Notes

- If the selected file contains several scans, the main scan will be imported.
- If the selected file contains solutions, all of them will be imported in addition to the main scan.

Plans & Scans											
★ ☆ ★ 📏 🔍 Compare Standard Report											
#	Cutting	Price	Mass	Alloc	Profile	Yield	DZ	ym-C	Gr	Sym	Br
<input type="checkbox"/>	Imported model		0.4600						UNK	UNK	
<input type="checkbox"/>	Imported - addition...		0.4600						UNK	UNK	
<input type="checkbox"/>	1 Brilliant	205\$	0.3879			82.61% E			EX	EX	
<input checked="" type="checkbox"/>	1 Brilliant	205\$	0.3879			82.61% E			EX	EX	
<input type="checkbox"/>	2 Brilliant	289\$	0.3826			82.61% H			EX	EX	

Supported Formats

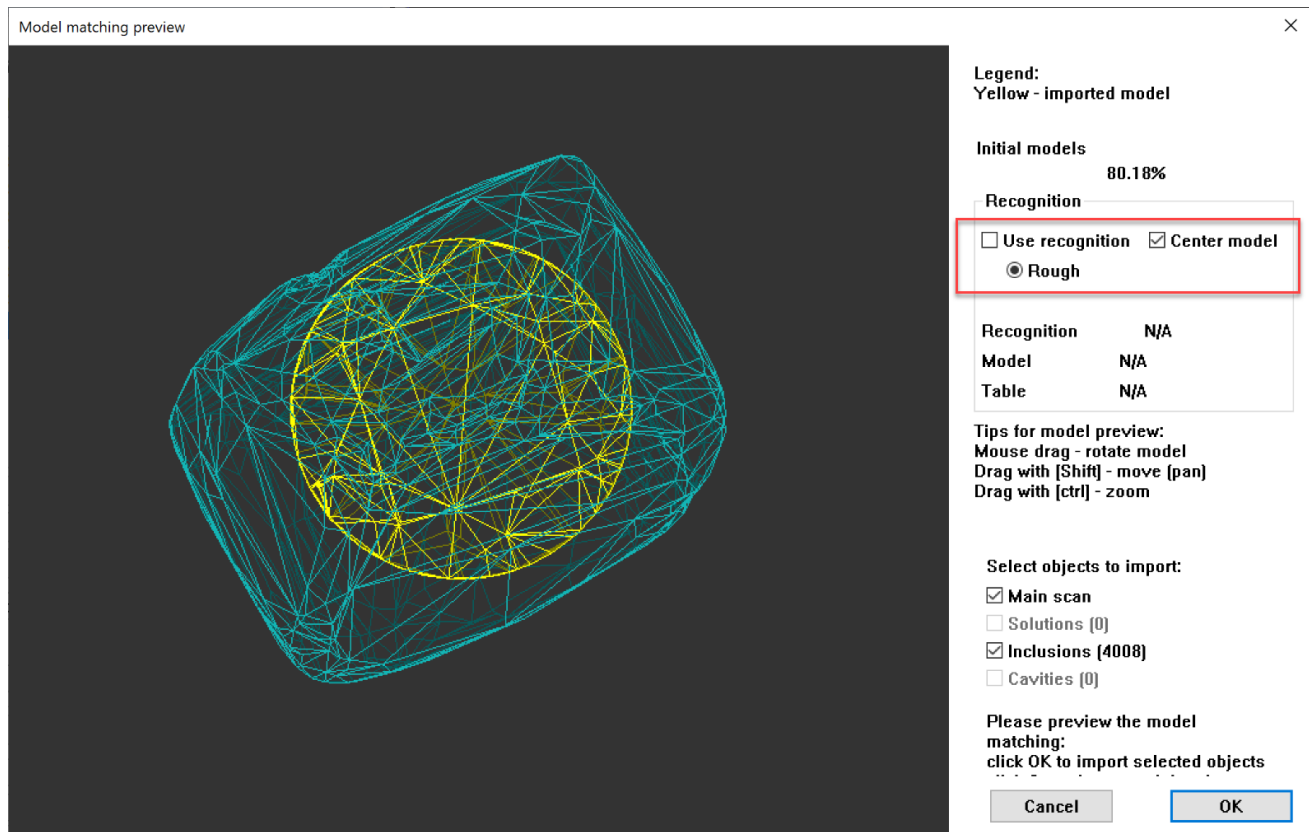
List of Formats

The following formats can be imported:

- OX2Z
- DMX
- ASC

DMX - Some Details

On importing DMX models (via **File > Import**), now the **Model matching preview** dialog is displayed:



Here you can do one of the following:

- Use recognition or
- If you do not use this option you can **Center model** if necessary

Related Pages

- [Files and Formats](#)
- [Models management](#)