

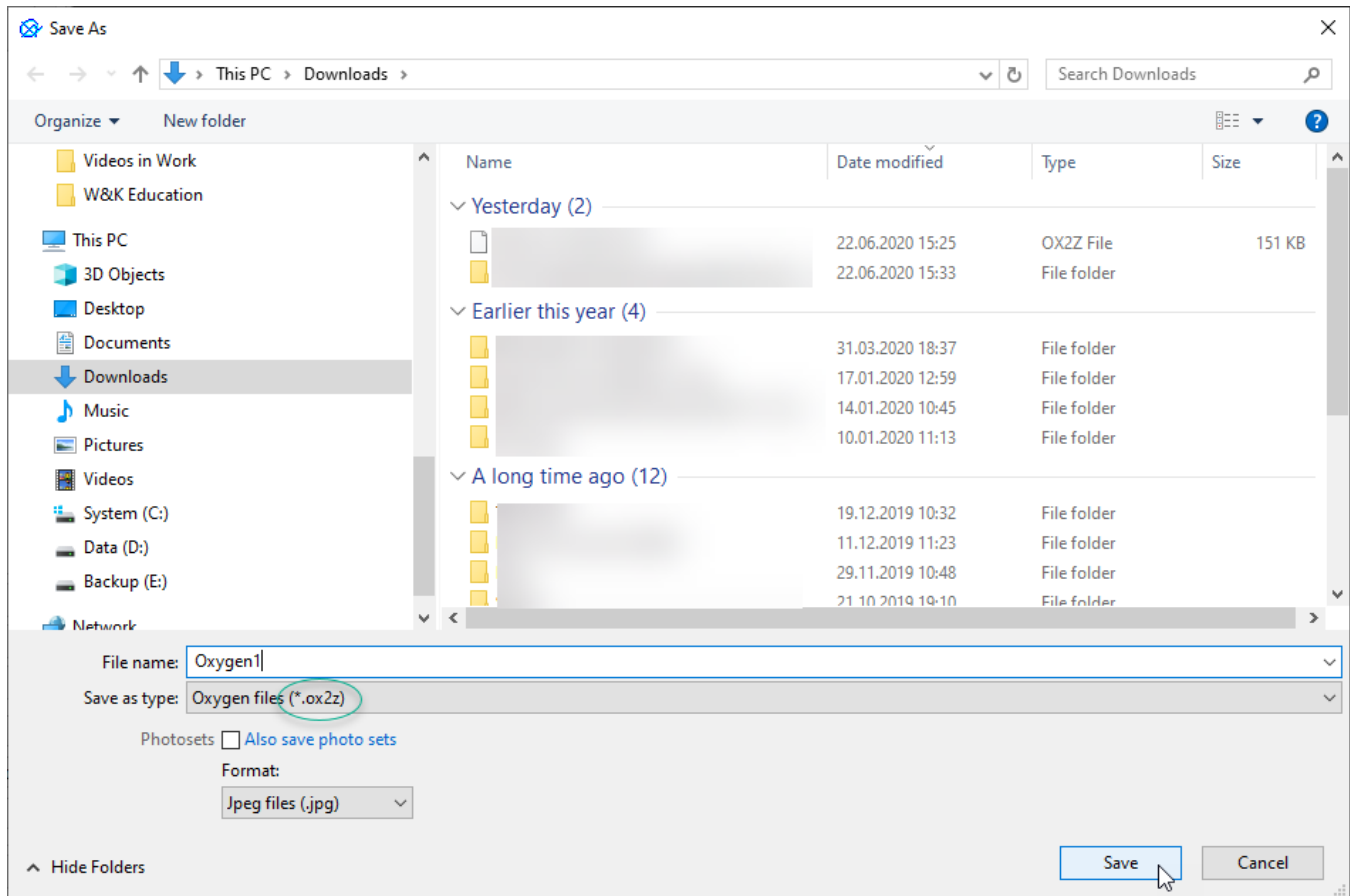
Files and Formats

On this page:

- 1 [Native Format](#)
- 2 [OX2Z Project Content](#)
- 3 [Additional Formats to Open](#)
- 4 [Related Pages](#)

Native Format

The system opens and saves projects in the OX2Z format.



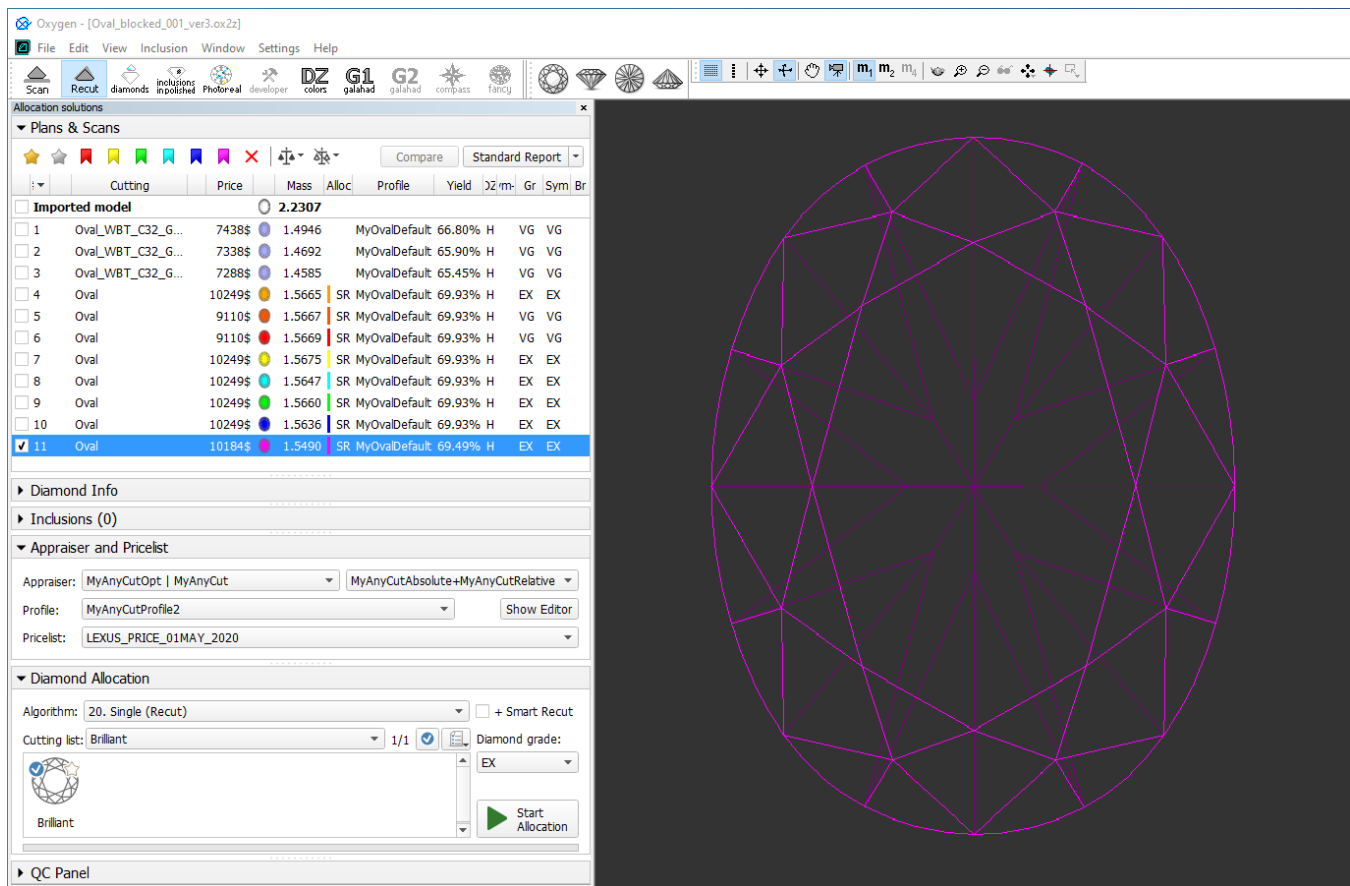
The predecessor of the HP Carbon system ([HP Oxygen](#)) cannot open OX2Z files.

OX2Z Project Content

In HP Carbon OX2Z project one or multiple stone models are stored.

Models can be of [two types](#):

- Scan - model obtained via [Scanning](#) or importing
- Solution - model produced by one of the HP Oxygen algorithms



Additional Formats to Open

The system is also able to open the DMX files created in [DM-Xray](#). For more information about DMX files, see "Protected DMX export" in [DM-Xray 1.0.0.1 "What's New"](#).

Related Pages

- [Export](#)
- [Import](#)
- [Models management](#)