

# Import

You can import models into your current project.

On this page:

1

Importing Models from Files

2

Supported Formats

2.1

List of Formats

2.2

DMX - Some Details

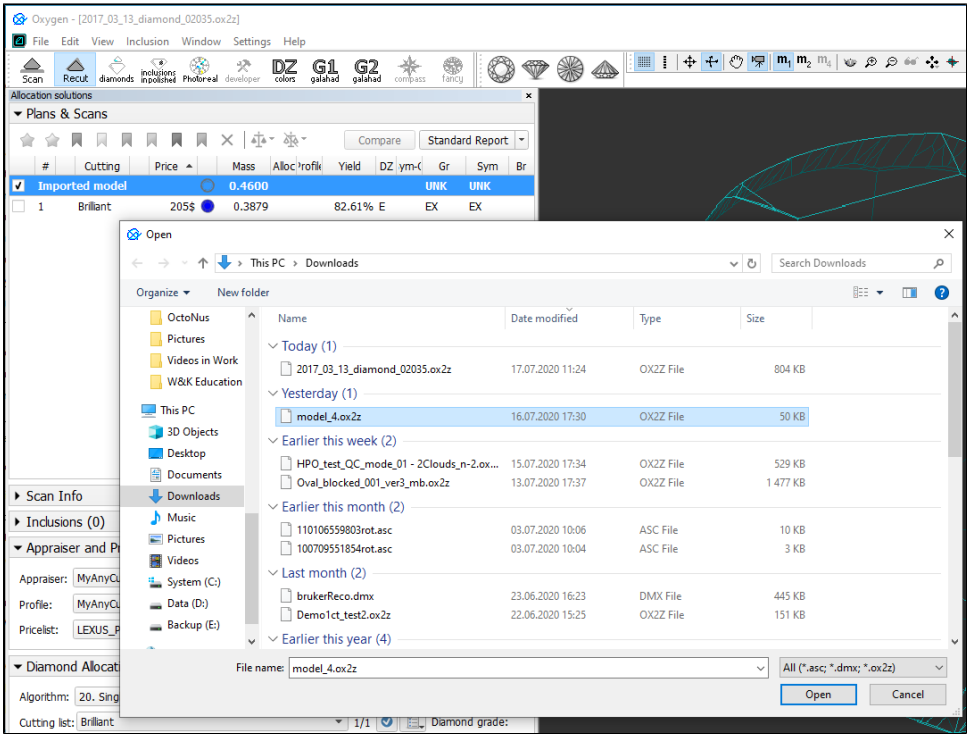
3

Related Pages

## Importing Models from Files

To import a model:

1. Select **File > Import**. The import dialog is displayed.
2. Select file containing model to import.



3. Click **Open**. The **Model matching preview** dialog is displayed.
4. In the **Model matching preview** dialog, select matching options and then click **OK**. The additional model is added to the project.

### Notes

- If the selected file contains several scans, the main scan will be imported.
- If the selected file contains solutions, all of them will be imported in addition to the main scan.

Plans & Scans												
#	Cutting	Price	Mass	Alloc	profile	Yield	DZ	ym	Gr	Sym	Br	
<input type="checkbox"/>	Imported model		0.4600						UNK	UNK		
<input type="checkbox"/>	Imported - addition...		0.4600						UNK	UNK		
<input type="checkbox"/>	1	Brilliant	205\$	0.3879		82.61% E			EX	EX		
<input checked="" type="checkbox"/>	1	Brilliant	205\$	0.3879		82.61% E			EX	EX		
<input type="checkbox"/>	2	Brilliant	289\$	0.3826		82.61% H			EX	EX		

# Supported Formats

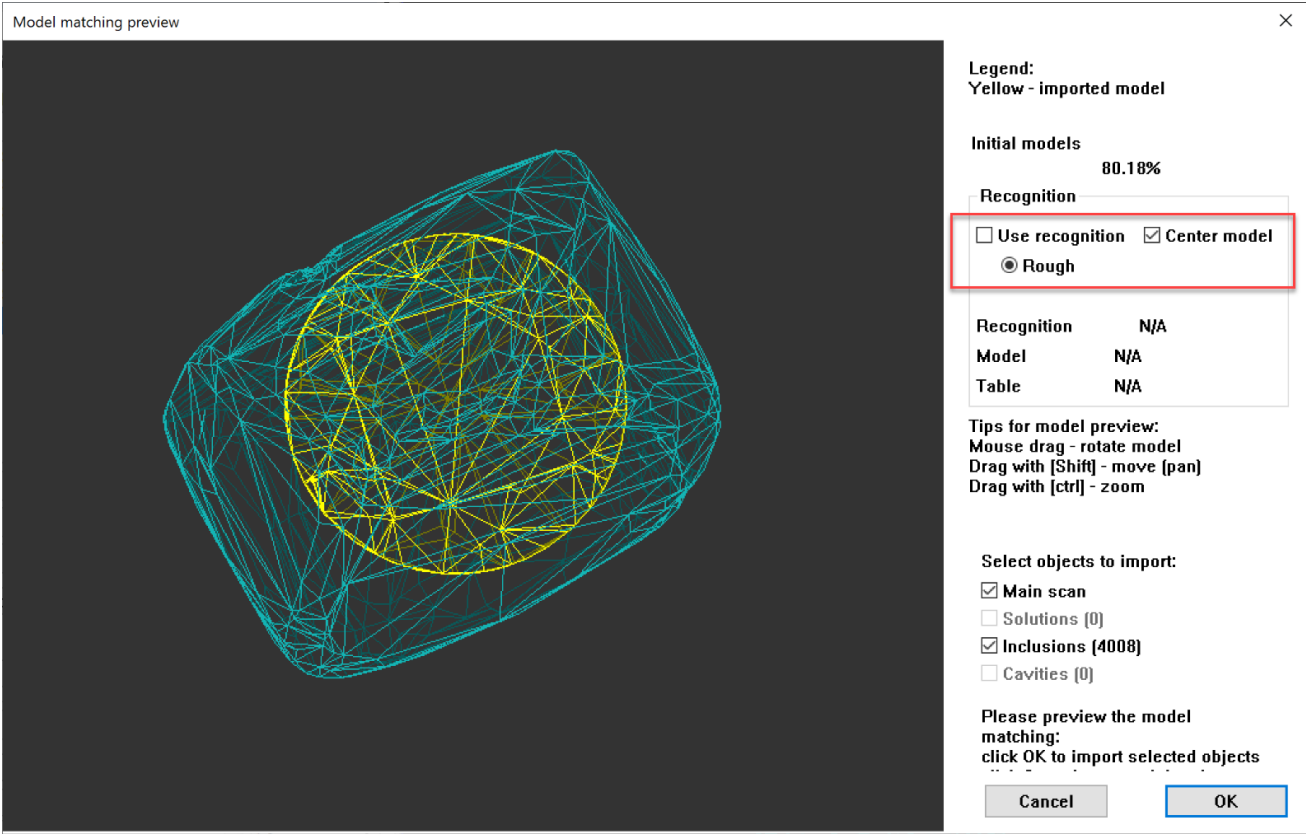
## List of Formats

The following formats can be imported:

- OX2Z
- DMX
- ASC

## DMX - Some Details

On importing DMX models (via **File > Import**), now the **Model matching preview** dialog is displayed:



Here you can do one of the following:

- **Use recognition** or
- If you do not use this option you can **Center model** if necessary

## Related Pages

- [Files and Formats](#)
- [Models management](#)