

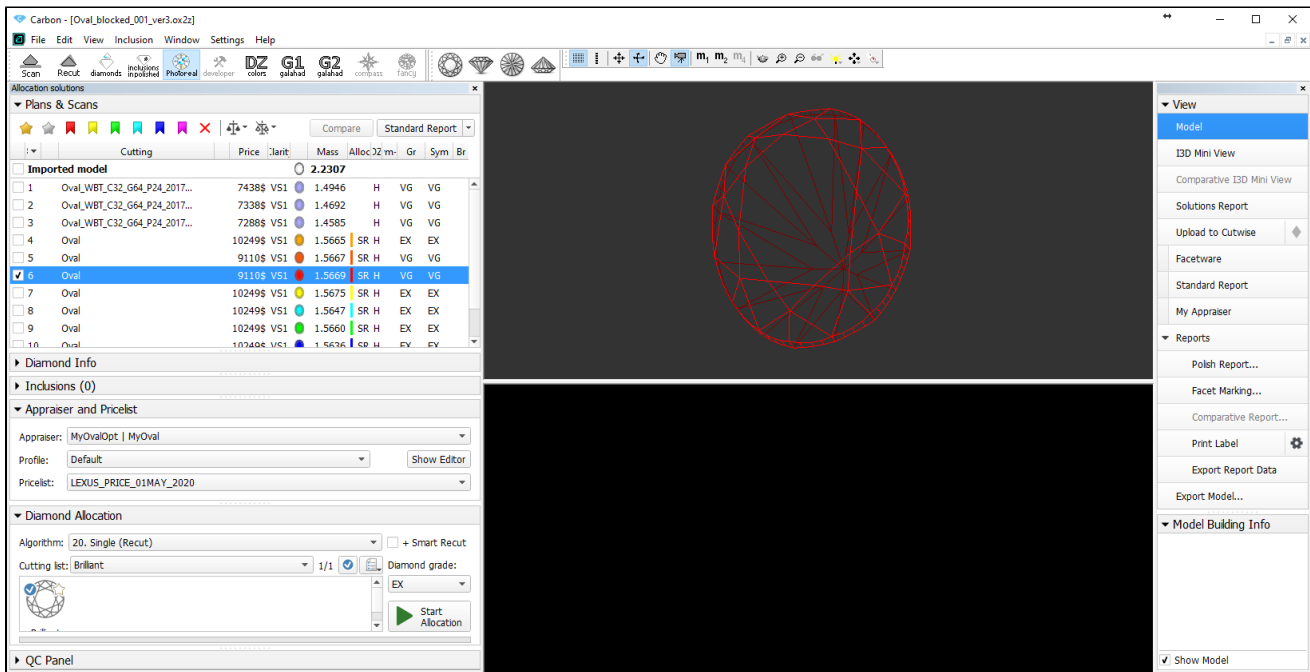
Photoreal View Black Screen

On this page:

- 1 [Description](#)
- 2 [Possible Reasons](#)
- 3 [How to Solve](#)

Description

On clicking the **Photoreal** button, instead of the stone view, you obtain the black screen in the Photoreal View section of the Scene.

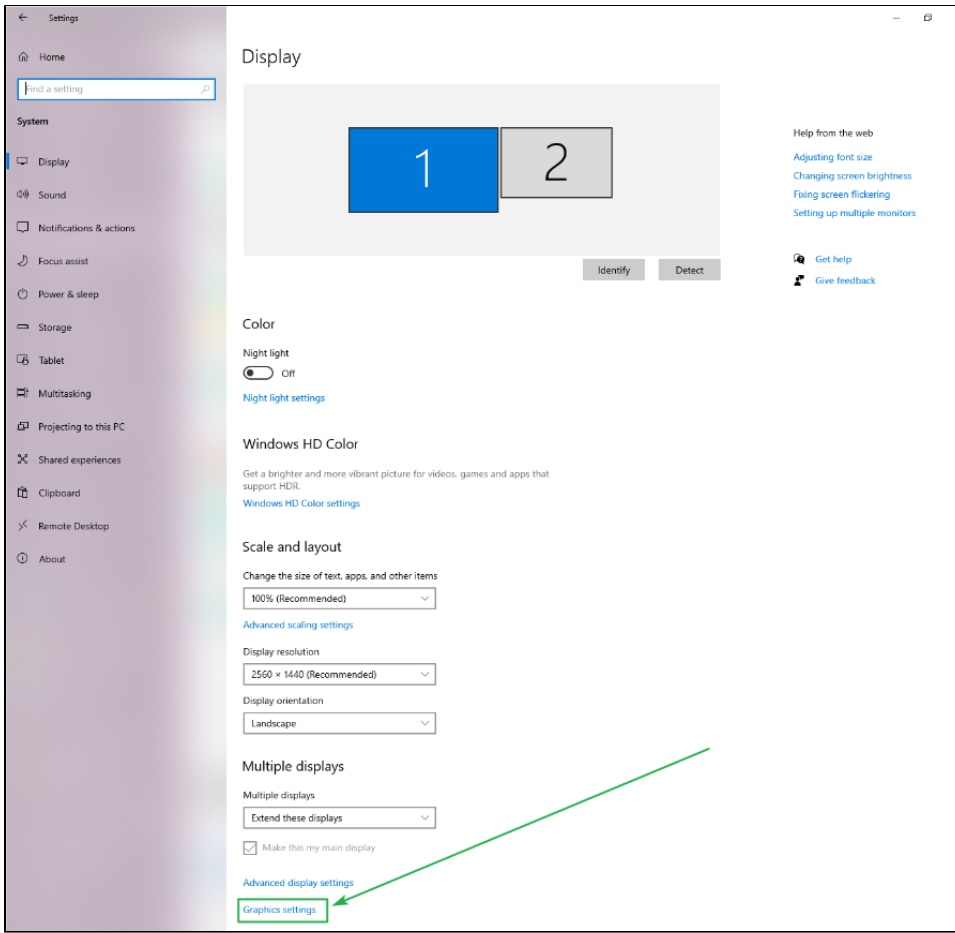


Possible Reasons

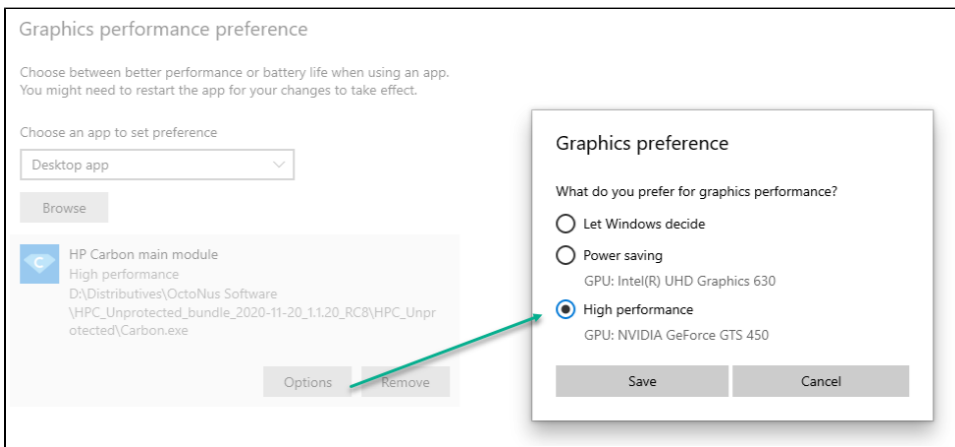
- Two graphical cards and Windows is using the wrong one.

How to Solve

1. In Windows, go to **Settings**.
2. Search for the **Display** settings.
3. On the Display tab, click **Graphics settings**.



4. Define a path to "carbon.exe".
5. For the "carbon.exe" app, select the **High Performance** option.



6. Save the changes.
7. Restart HP Carbon