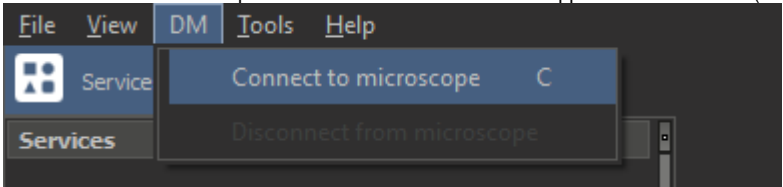


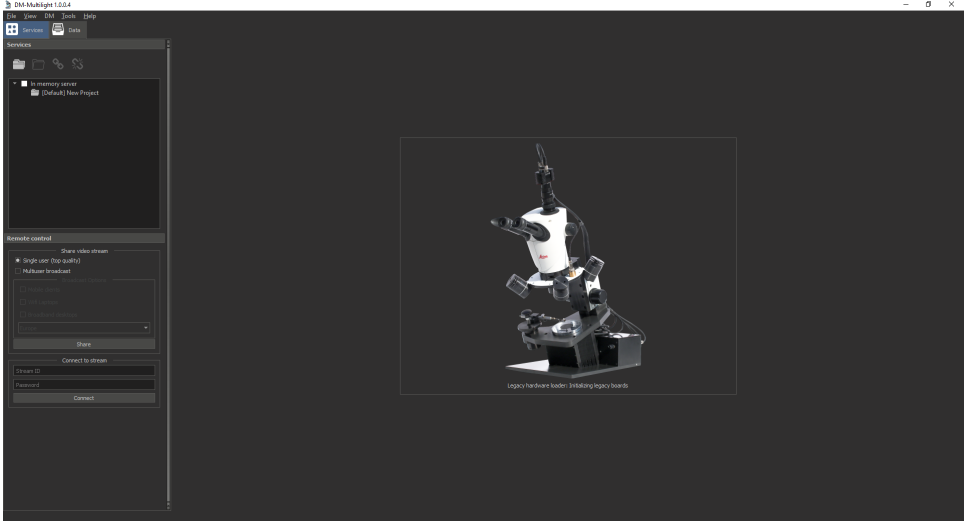
# Connection to Hardware

## Step-by-step guide

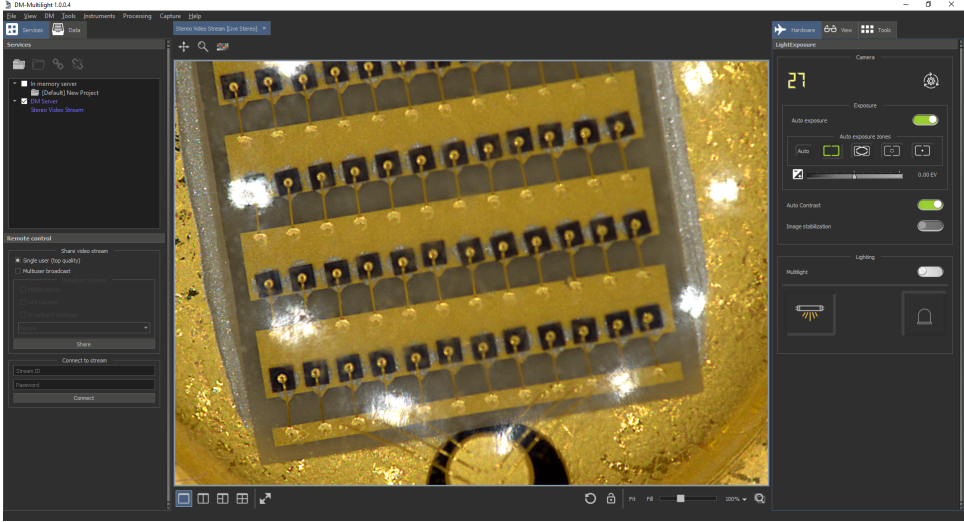
1. Click 'Connect to microscope' item of the 'DM' menu from the application main menu (or use 'C' shortcut)



2. Wait for the end of the connection to hardware. During the connection, you will see the following window:



3. If the connection is successful, you will see approximately the following window:



### Attention!

If the connection to hardware was failed, you will see an error message containing the reason for the failure. In case of any difficulties, please contact the developer for assistance.