

Interactive 3D Report

On this page:	
1	Overview
2	Generating Reports
2.1	Generating Polish Interactive 3D Report
2.2	Generating Comparative Interactive 3D Report
3	Viewing Generated Reports
3.1	List of Reports
4	Related Pages

Overview

Interactive 3D Report is the next step in the evolution of gemstone reports.

You can view the report in any modern browser on any platform (including tablets and smartphones), you can configure them according to your needs and preferences, and you can interact with them to see exactly the information you need, and get a better understanding of stone's properties.

Video I3D - Interactive Report				
Published:	2021, March 29	Last Updated:	2021, March 29	v.1.4
Your browser does not support the HTML5 video element				
<div>Video summary:</div> <ul style="list-style-type: none">Interactive 3D Report is opened in your browser from within HP CarbonIn the presented report you can:Toggle elements visibility (the visible ones will be included in a printed version)Configure your views (one or several, different modes, "what-to-show" options for each)Use interactivity of your views to explore all aspects of your models (rotate and zoom, mouse over the facet to get pop-up with the facet details)Save your configuration as preset and re-use itPrint report shaped by you and suiting your needs				
Video keywords: configure, I3D, interact, interactive 3D report, print, view				
Published in:	Release Notes	NA		
	Documentation	Interactive 3D Report, Data and Interaction in Interactive 3D Reports		
	Playlists	Short Videos YouTube: HP Carbon		
	Also	As Separate Page On YouTube No Specification (Short Video)		

The I3D Report technology also offers a convenient enterprise solution for gemstone manufacturers, which allows you to have a number of scanner workstations generating reports, which can then be instantly viewed on cutters' or managers' workstations using a freeware I3D Report Client application (this requires a shared network disk drive solution, or other file sharing and synchronization means, such as cloud storage services).

The [Polish](#) or [Comparative](#) report can be represented in the form of Interactive 3D Report.

oⁿoctonus

Interactive 3D Report

Version 1.8.9

Preset Manager

Print page

Report for Brilliant

Demo1ct

Polished Brilliant

21.11.2018

Model: Imported model

Expert name: N/A

Scale weight, ct: N/A

Corrected mass, ct: 1.02, 1.0192

Measurements: 6.369 (6.334 - 6.382) x 4.014 / 0.010 mm

Spread: -0.06 ct, -6.72 %

AGS Spread: N/A ct, N/A %

Extra Facet Girdle / Nat 3 (1/2)

Width	Length	Ratio (L/W)	Diameter Minimum	Diameter Maximum	Diameter Average	Total height
6.334 mm	6.382 mm	1.008	6.334 mm	6.382 mm	6.369 mm	4.014 mm

Crown height	Pavilion depth	Table	Culet	Bezel	Girdle height	Valley
1.047 mm	2.716 mm	3.541 mm	0.029 mm	0.249 mm	0.271 mm	0.157 mm
16.44 %	42.65 %	55.60 %	0.46 %	3.91 %	4.25 %	2.46 %

Crown Angle, °	Pavilion Angle, °	Star : Upper Ratio, %	Lower Half, %	Culet, %
36.43	40.61	N/A : N/A %	79.15 %	0.46 %

▼ Photorealistic Images:

ASET + White

IdealScope

Office

Arrows

Hearts

AI Gilbertson + White

oⁿoctonus

Interactive 3D Report

Version 1.8.9

Preset Manager

Print page

Comparative report for Brilliant

Demo1ct

Polished Brilliant

22.11.2018

Current model: Imported model

Reference model: 1

Report type: Comparative (Reference - Current), Frozen

Current Parameters: 1.02 ct, Cut: Poor, Sym: VG

Reference Parameters: 0.92 ct, Cut: Poor, Sym: EX

Expert name: N/A

Δ Real weight, ct: N/A

Δ Calculated weight, ct: -0.10, -0.0975

Δ Spread: 0.06 ct, 5.74 %

Δ AGS Spread: N/A ct, N/A %

Comparative

Current

Reference

Δ Ratio (L/W)	Δ Minimum Diameter	Δ Maximum Diameter	Δ Total height
-0.006	-0.064 mm	-0.105 mm	-0.223 mm

Δ Crown height	Δ Pavilion depth	Δ Table	Δ Culet	Bezel	Δ Girdle	Valley
-0.209 mm	0.012 mm	0.330 mm	-0.029 mm	-0.022 mm	-0.048 mm	-0.047 mm
-3.08 %	0.83 %	5.92 %	-0.46 %	-0.30 %	-0.70 %	-0.72 %

Δ Crown Angle, °	Δ Pavilion Angle, °	ΔStar : Upper Ratio, %	Δ Lower Half, %	Δ Culet, %
-1.43	0.39	N/A : N/A %	1.37 %	-0.46 %

▼ Photorealistic Images:

Current

ASET + White

Current

IdealScope

Current

Office

Reference

Reference

Reference

Generating Reports

 You will need a HASP key with Interactive 3D Report feature enabled to use this functionality.

Generating Polish Interactive 3D Report

To generate a new Polish Interactive 3D Report:

1. In HP Carbon, select the model.
2. On the right panel, click **Polish Report** . The **Polish Report** dialog is displayed.
3. In the **Polish Report** dialog, make sure, **Stone ID** is correct. If necessary, edit the ID.
4. Use the **Interactive 3D** tab.
5. Click **Make Report**.

Extra parameters

Stone ID

P387-E002

Expert

Model name

Real weight

☐ Use GIA grading rules

☐ Higher precision (plus one digit)

Report templates

Open RTF

Print RTF

Open HTML

Interactive 3D

Data Path:

C:\Users\Tisevich\Documents\OctoNus Software\I3D Rep

...

Viewer Path:

C:\ProgramData\OctoNus Software\I3D Report Viewer

...

☒ Add Photorealistic Images to report

☒ Open Interactive 3D Report in default browser after generation

Open Data Folder

☐ Black and white report

☒ Color report

Make Report

Open Templates Folder

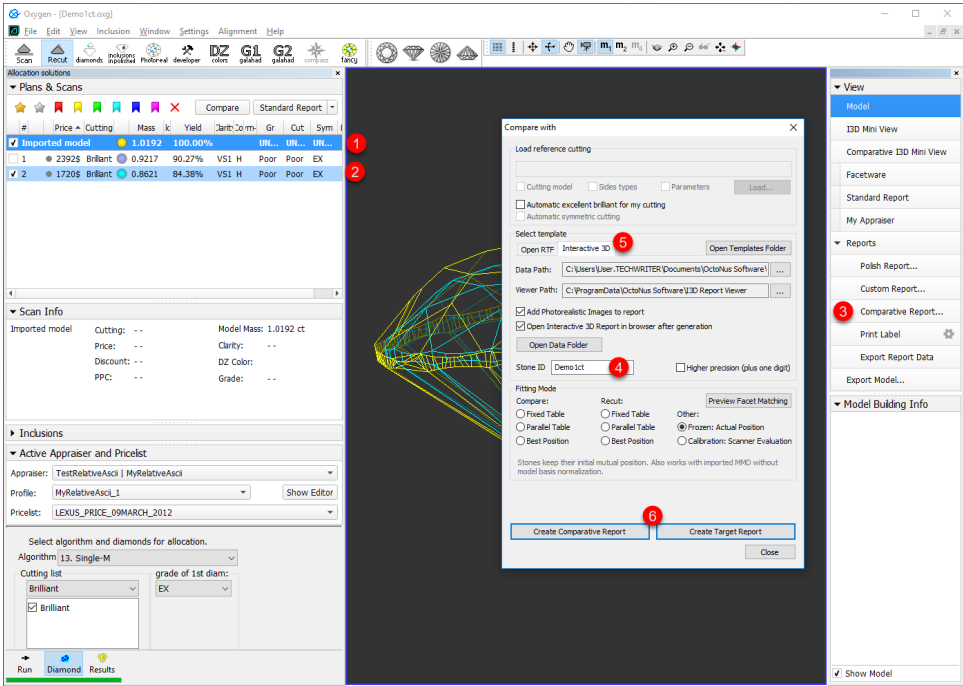
Close Window

If **Interactive 3D Report Viewer Path** is configured correctly and you have checked the **Open Interactive 3D Report in default browser after generation** check box, the report will be opened in default system browser after generation.

Generating Comparative Interactive 3D Report

To generate a new Comparative Interactive 3D Report:

1. In HP Carbon, select current and reference models. See "Selecting Models to Compare" on the [Comparative Report](#) page.
 2. On the right panel, click **Comparative Report**. The **Compare with** dialog is displayed.
 3. In the **Compare with** dialog, make sure, **Stone ID** is correct. If necessary, edit the ID.
 4. Use the **Interactive 3D** tab.
 5. Do one of the following:
 - To obtain "Reference - Current" report, click **Create Comparative Report**.
 - To obtain "Current - Reference" report, click **Create Target Report**.
- For a detailed description of the difference between these two types of reports, see "Report Types" on the [Comparative Report](#) page.



If **Interactive 3D Report Viewer Path** is configured correctly and you have checked the **Open Interactive 3D Report in default browser after generation** check box, the report will be opened in default system browser after generation.

Viewing Generated Reports

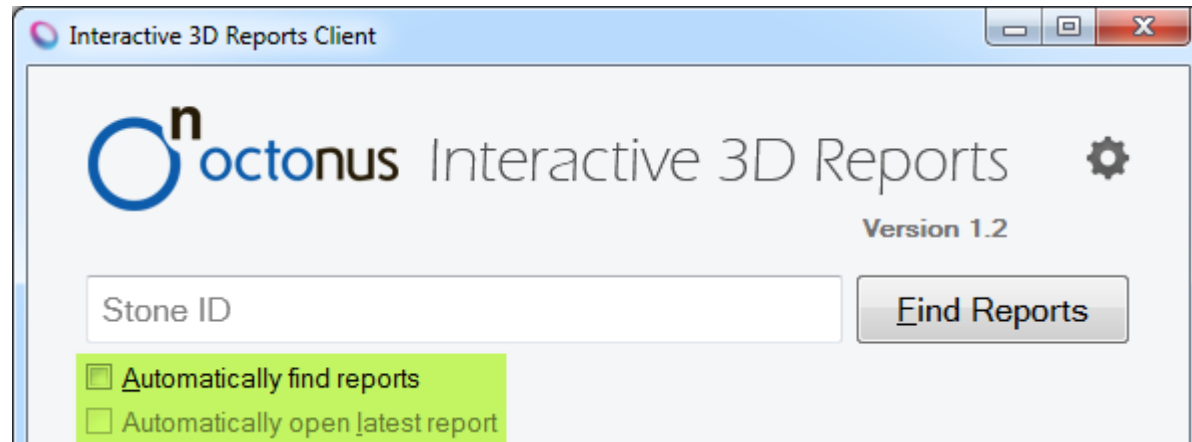
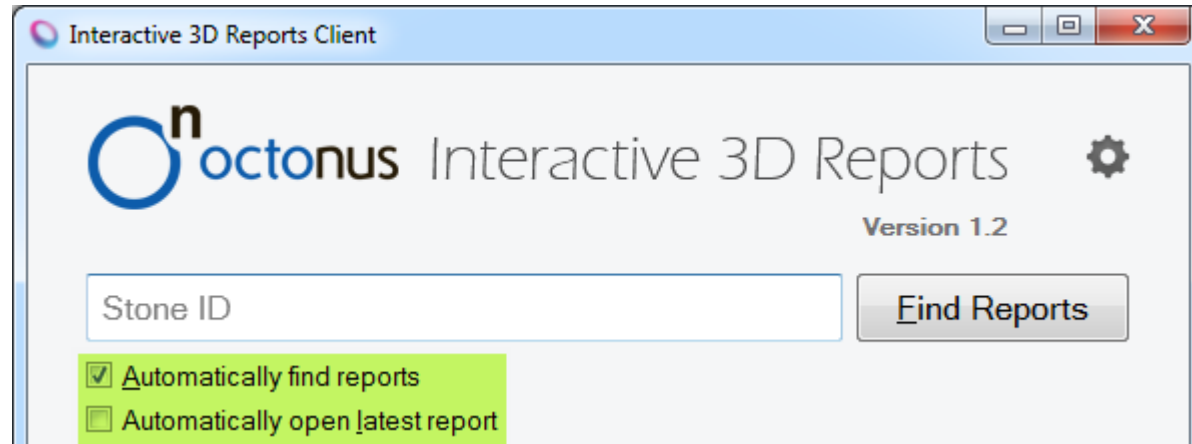
To view a previously generated report for a stone with a specific ID, open **Interactive 3D Reports Client** which is a separate Windows application that allows scanner operators and cutters to find, open and operate with HTML5-based Interactive 3D Reports (from their cutter's workstations). Make sure that the software is [configured](#) properly, and you see no error messages in the bottom of the window.

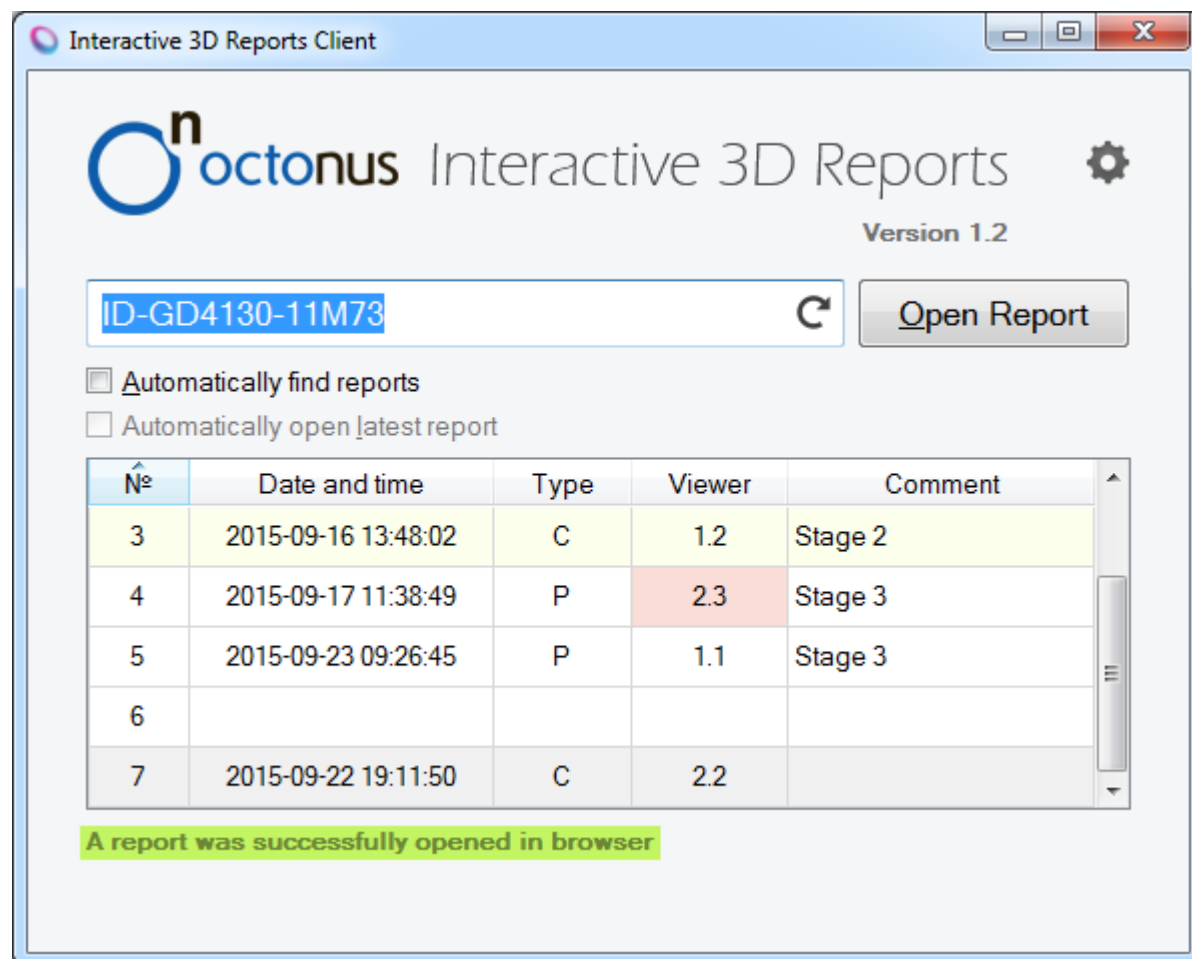
Enter a Stone ID in the corresponding field or set input focus to the field and use a barcode scanner, or pasting from the clipboard.

The focus is automatically set in the Stone ID Field when the app window is activated.

If the "Intercept new line in Stone ID" option is checked, and the focus is in the Stone ID Field, pressing the Enter key is disabled.

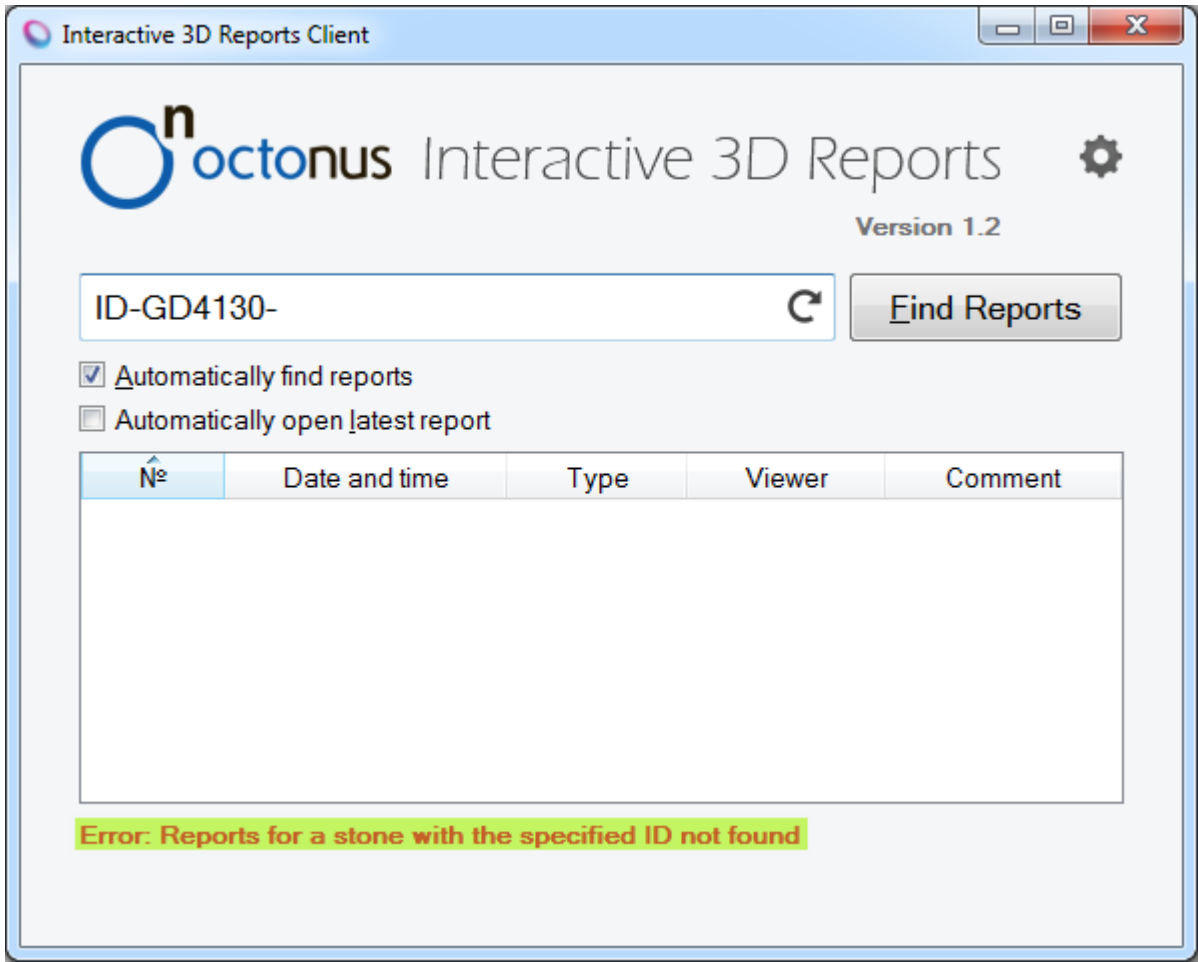
If the **Automatically find reports** option is enabled, a search for reports will be performed automatically shortly after you have finished entering the ID. If the option is disabled, you can press the **Enter** key (or the **Ctrl + Enter** shortcut if the "Intercept new line in Stone ID" option is checked), the **Refresh** icon (a circular arrow or the **F5**) or the **Find Reports** button to search for reports with the specified Stone ID. Herewith, the "Automatically open latest report" option will be unchecked and deactivated, and the focus will be transferred to the list of reports.





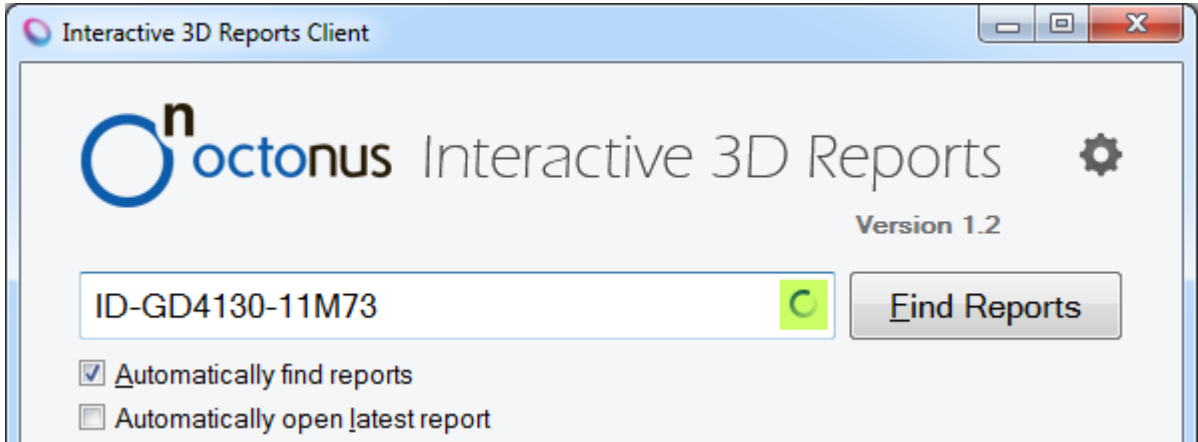
In case there were no reports found for a stone with the provided ID, you will see the error messages. This means that either:

- No report was previously generated for such Stone ID.
- You have made a mistake while entering a Stone ID.
- Reports Data path is configured incorrectly.



If reports are found, and the focus again is set in the Stone ID Filed then the **Tab** key is pressed, the focus will be switched to the report list. If the "Automatically find reports" option is unchecked, and reports aren't found for the specified Stone ID then the **Tab** key is pressed, the focus will be set in the Find Reports button.

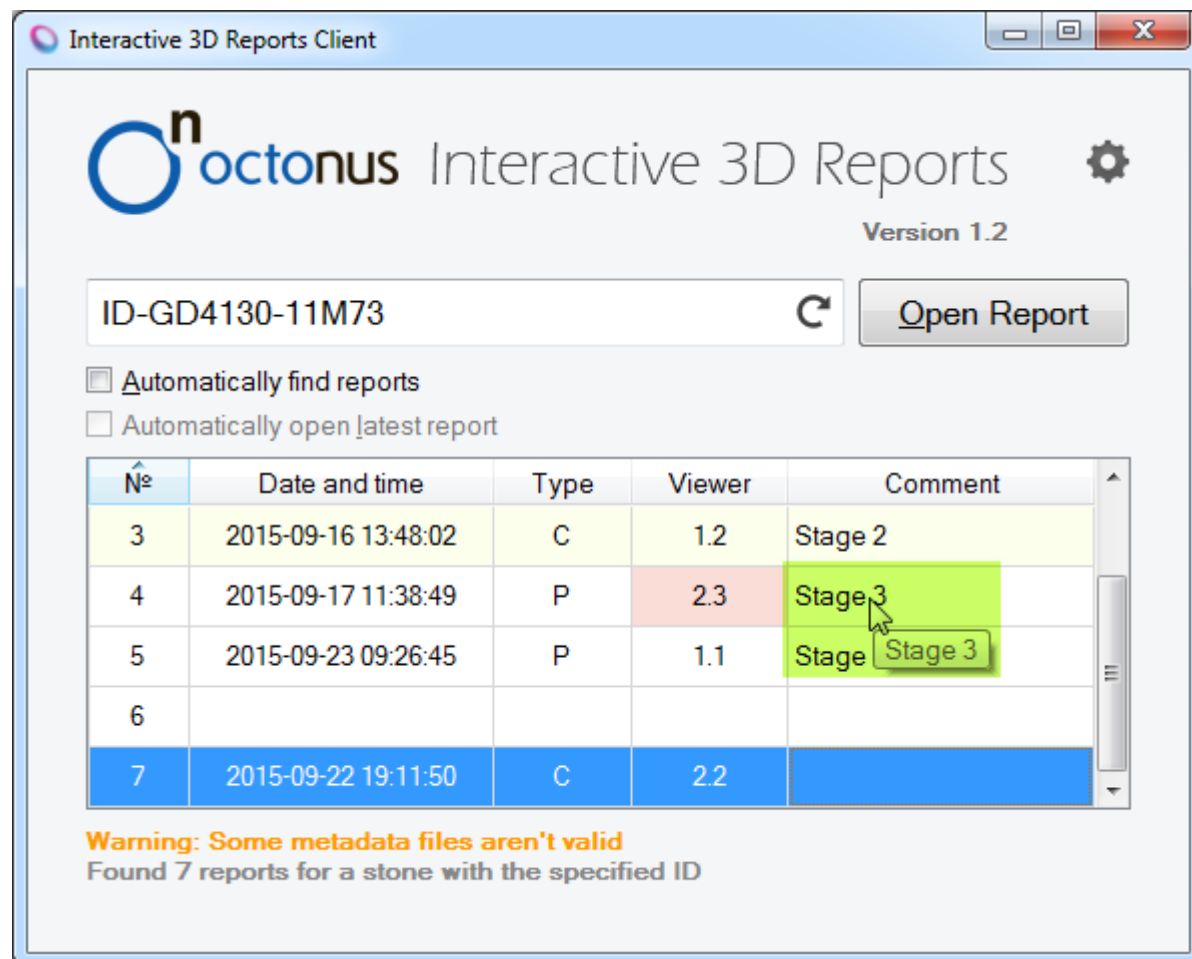
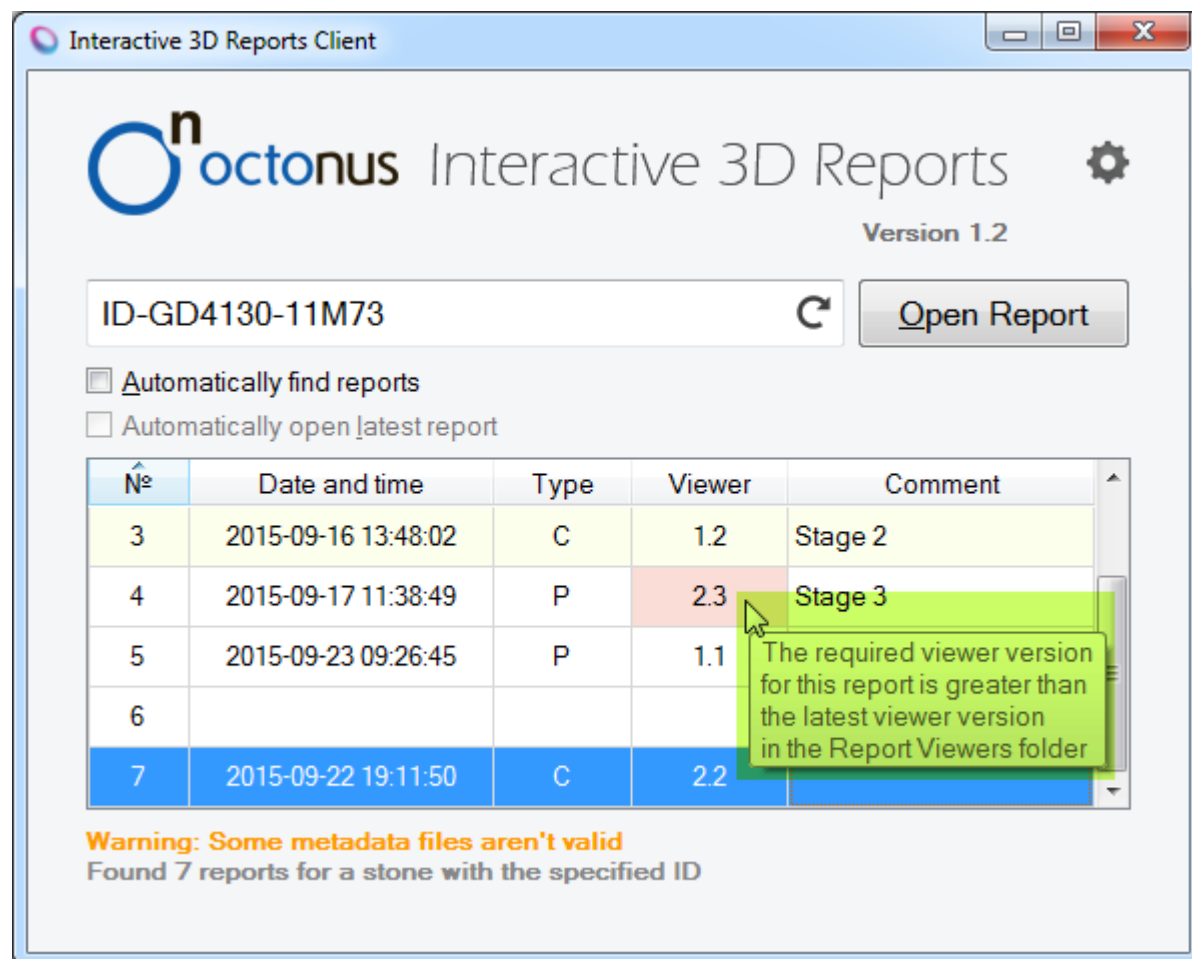
If the search or opening operations take a long time, the throbber is displayed in the **Stone ID** field instead of the refresh icon, it means the operation is being processed.





List of Reports


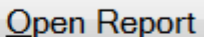
In the Interactive 3D Reports Client window, the list of found reports is presented as a table and contains data about reports:

- of the report, identifying it in a list.
- **Date and Time** when a report has been produced.
- **Type**. There are the two types of reports in the table: P (Polish), C (Comparative).
- **Viewer**. If the viewer version for this report is greater than the latest viewer version in the Viewers folder, the viewer's cell for this report will be colored by red, and a tooltip will be shown when the mouse cursor is over the cell.
- **Comment**. Tooltips are shown when the mouse pointer is over non-empty cells of the comment column. The cells of the comment column are editable by the mouse double-clicking, the inputted comment is saved in the Data folder.



Interactive 3D Reports Client



 **Interactive 3D Reports** 
Version 1.2


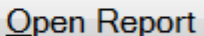
ID-GD4130-11M73  

☐ Automatically find reports
☐ Automatically open latest report

Nº	Date and time	Type	Viewer	Comment
5	2015-09-23 09:26:45	P	1.1	Stage 3
1	2015-09-23 09:06:22	P	1.0	Stage 1
7	2015-09-22 19:11:50	C	2.2	
2	2015-09-22 18:55:16	P	1.0	
4	2015-09-17 11:38:49	P	2.3	Stage 3

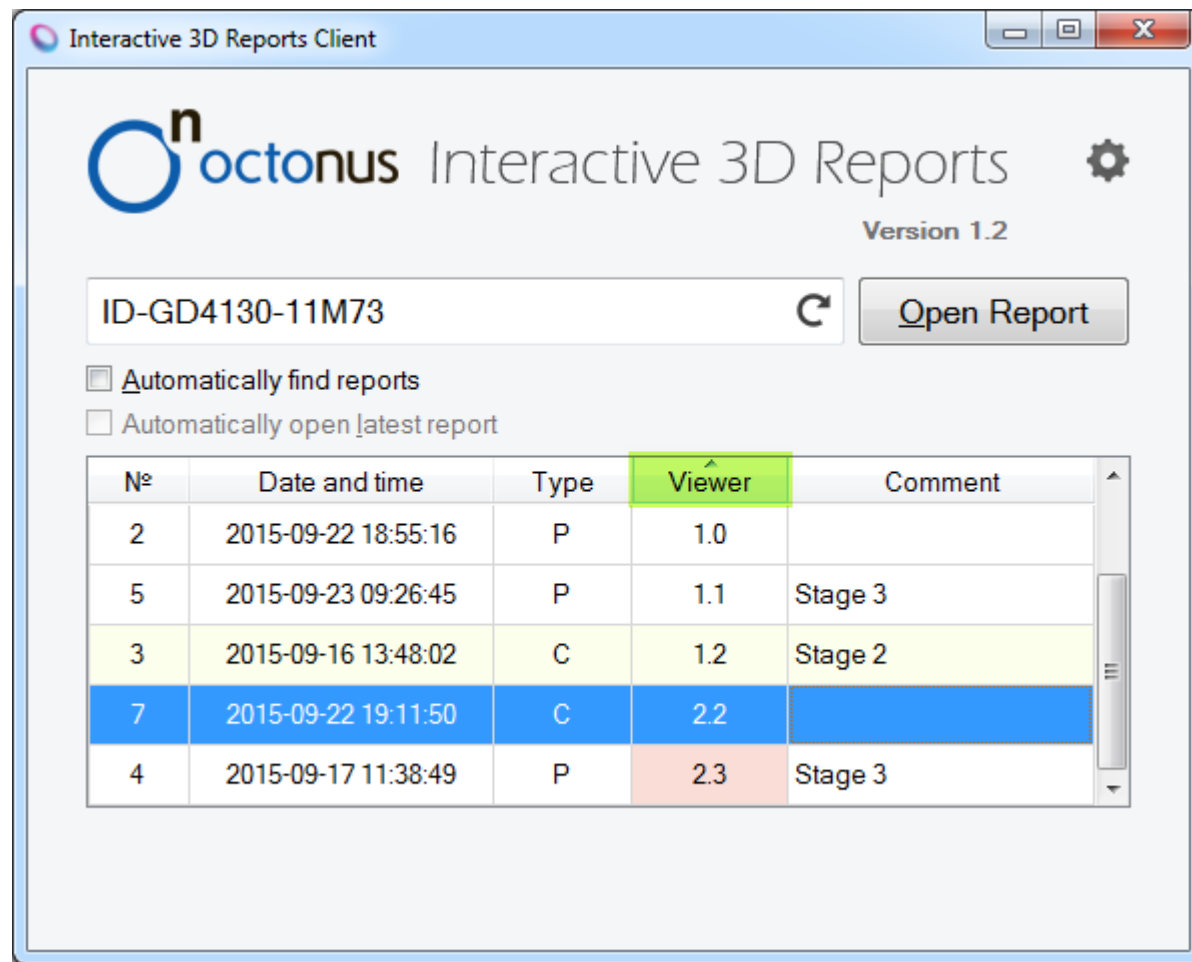
Interactive 3D Reports Client

 **Interactive 3D Reports** 
Version 1.2

ID-GD4130-11M73  

☐ Automatically find reports
☐ Automatically open latest report

Nº	Date and time	Type	Viewer	Comment
5	2015-09-23 09:26:45	P	1.1	Stage 3
1	2015-09-23 09:06:22	P	1.0	Stage 1
2	2015-09-22 18:55:16	P	1.0	
4	2015-09-17 11:38:49	P	2.3	Stage 3
7	2015-09-22 19:11:50	C	2.2	

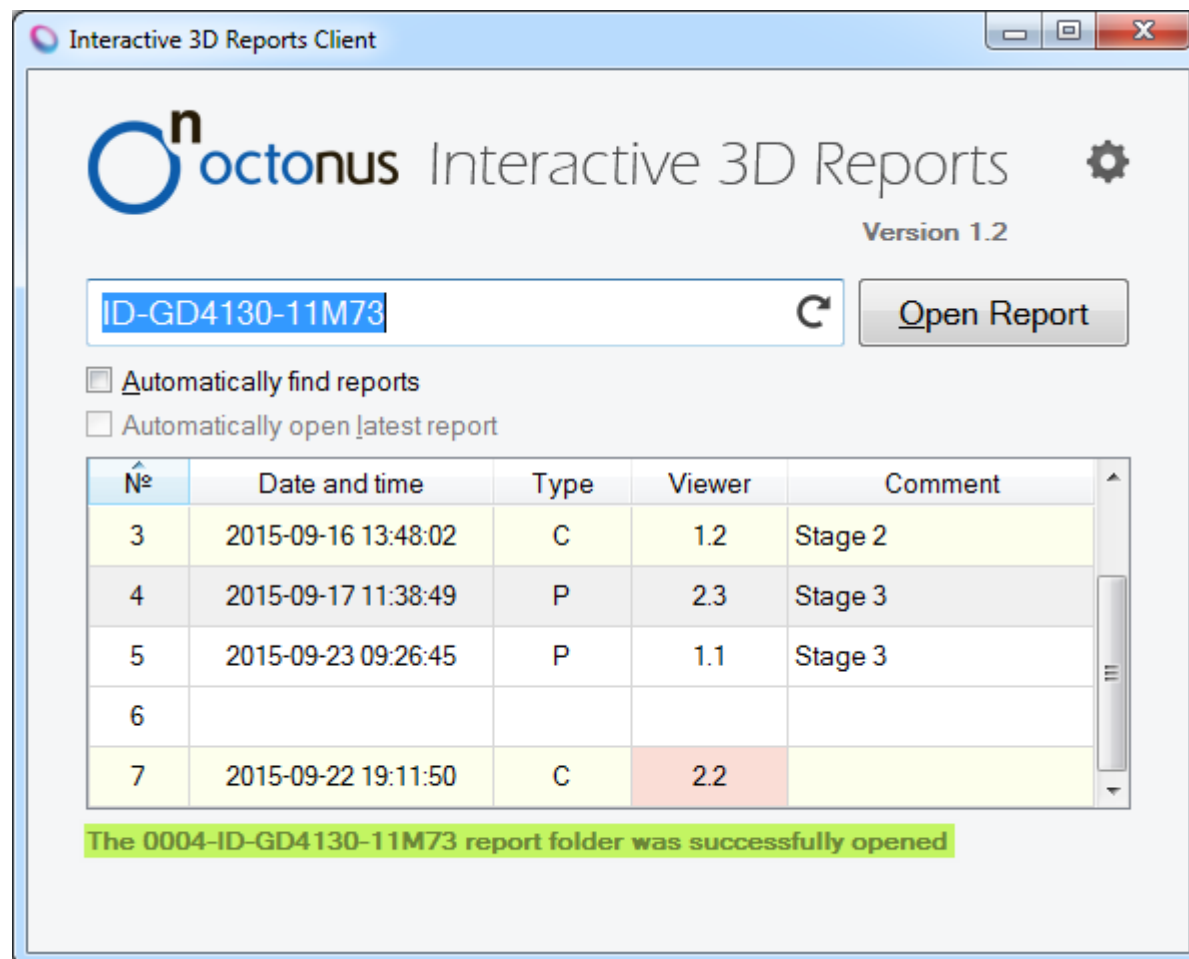
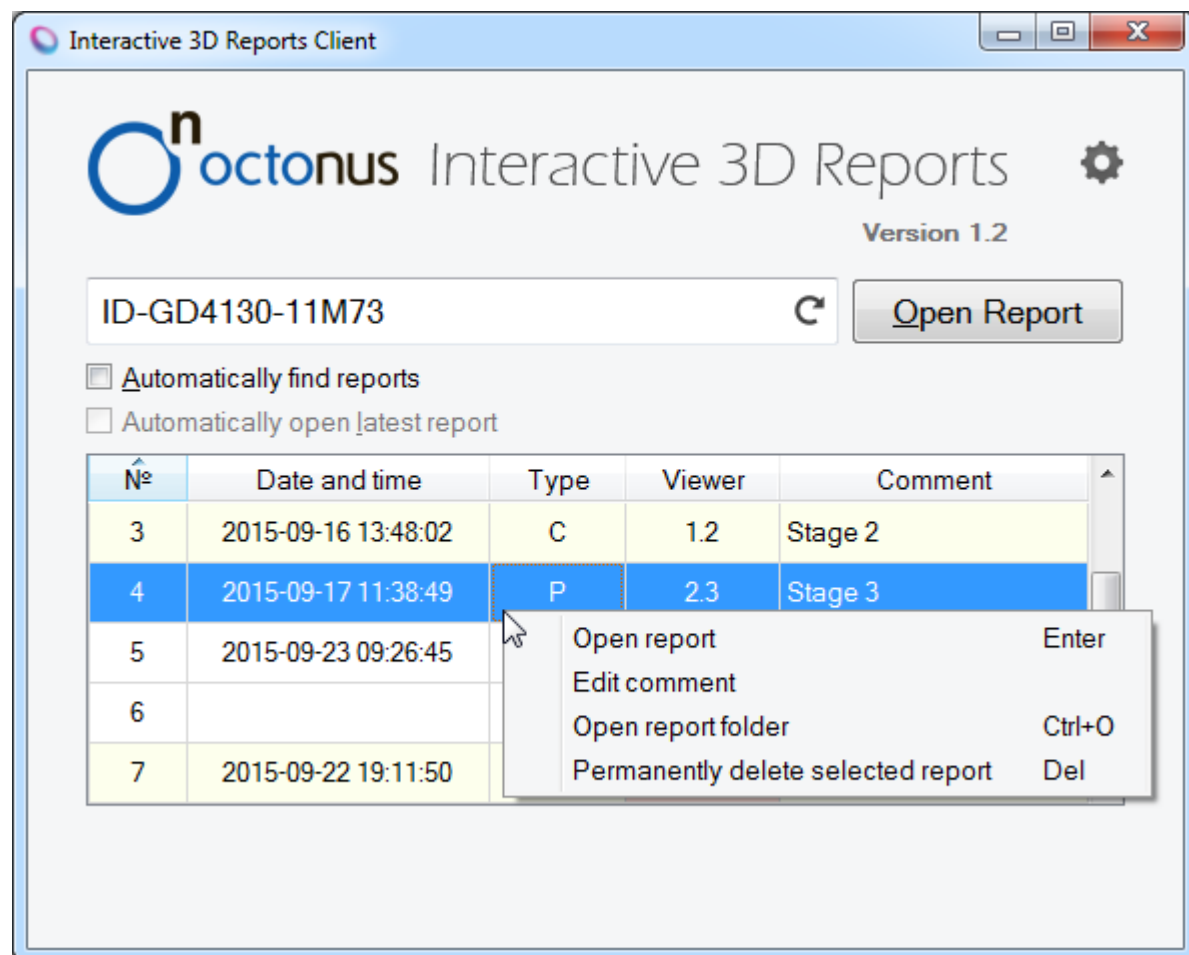


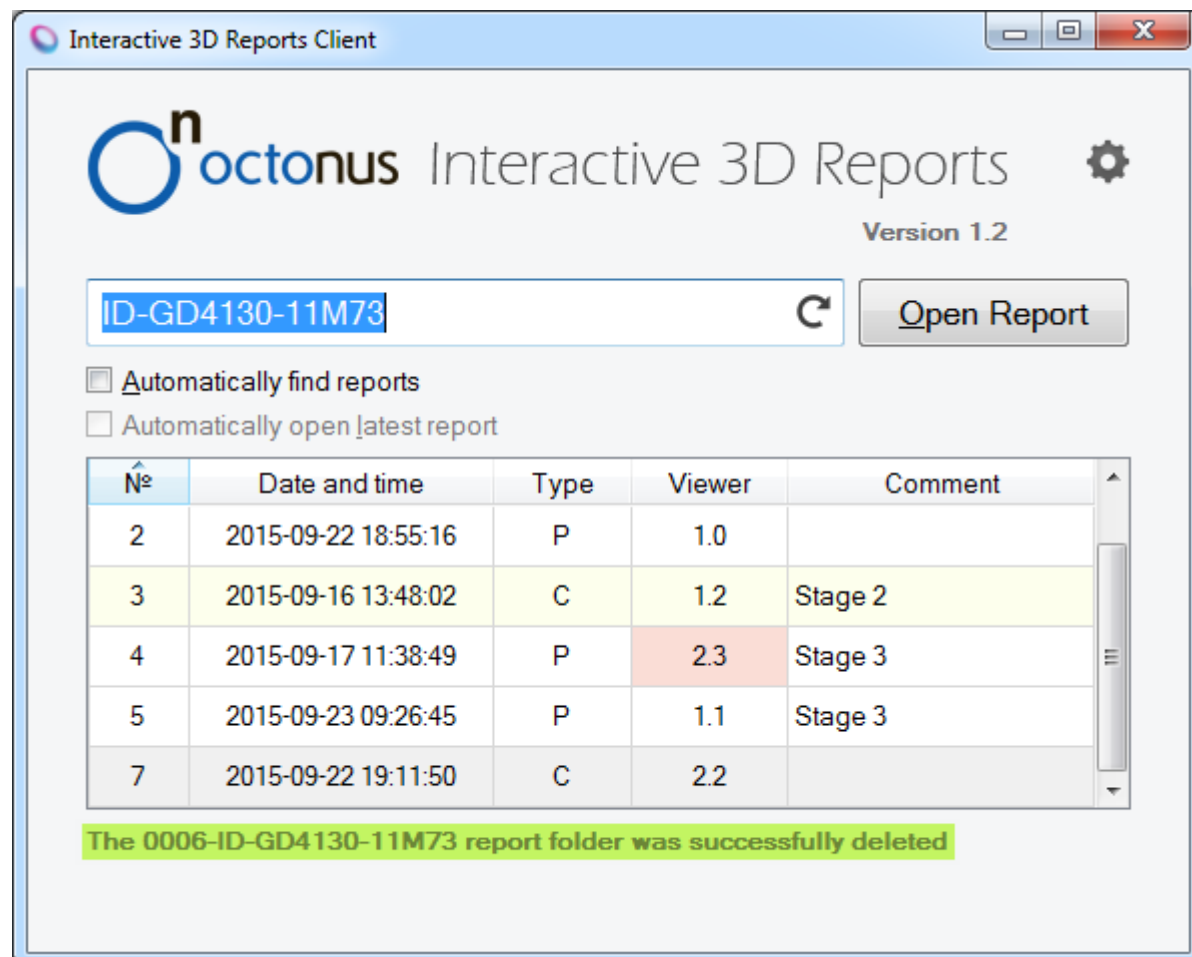
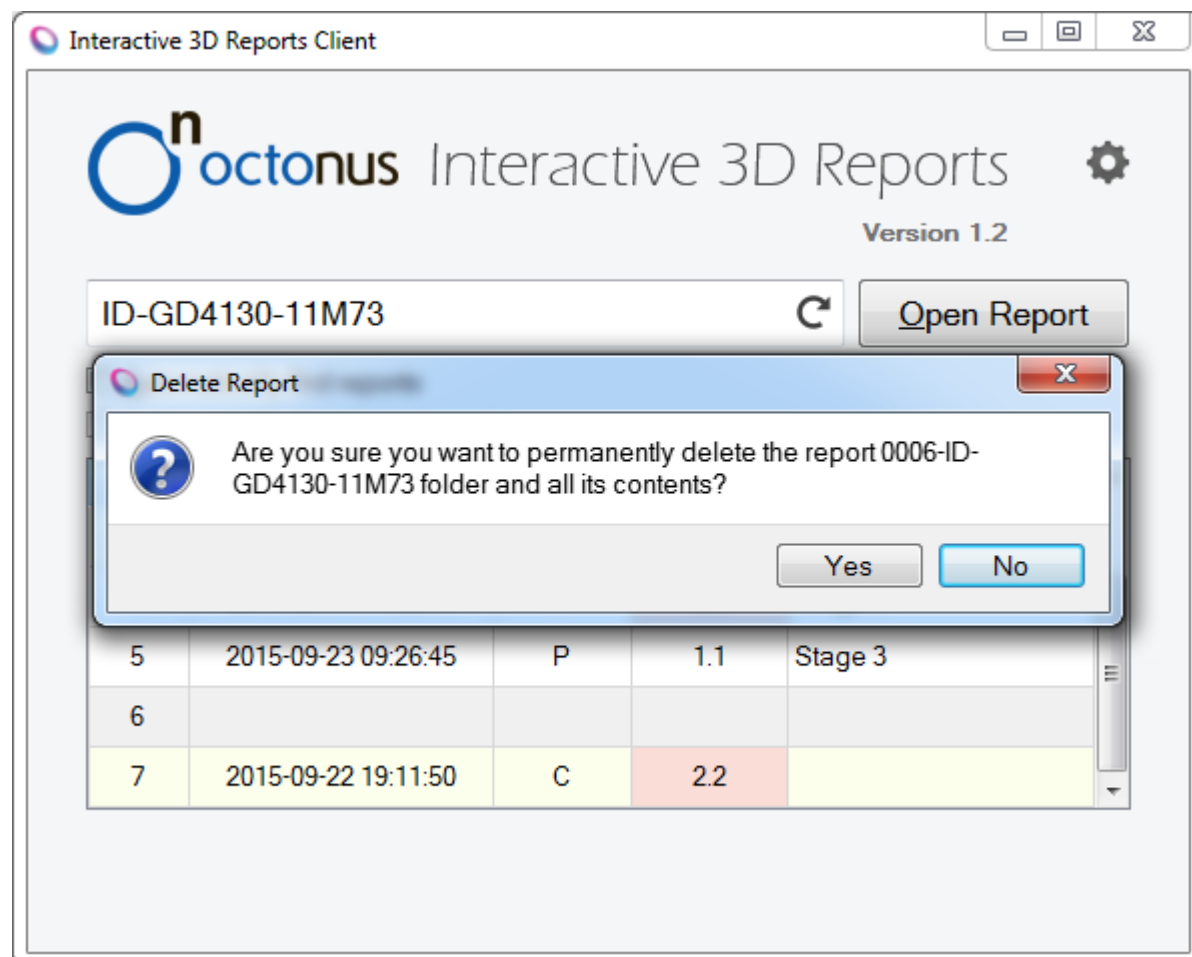
The **Context Menu** is being shown at the mouse right-clicking on any cell in the table. The menu contains the following items:

- **Open Report.** The action duplicates the Open Report button action. You can press the **Enter** key to open a selected report.
- **Edit Comment.** The action duplicates the mouse double-clicking on a cell of the Comment column.
- **Open report folder.** The action is used to open a selected report folder in the default File Explorer. You can press the **Ctrl + O** shortcut to perform this action.
- **Permanently delete selected report.** The action is used to permanently delete a selected report from a network disk. You can press the **Del** key to perform this action.



The confirmation message is shown. If you click **Yes**, the selected report folder will be permanently deleted from the network disk.





Related Pages

- [Comparative I3D Mini View](#)
- [I3D Mini Views](#)
- [Interactive 3D Report](#)