

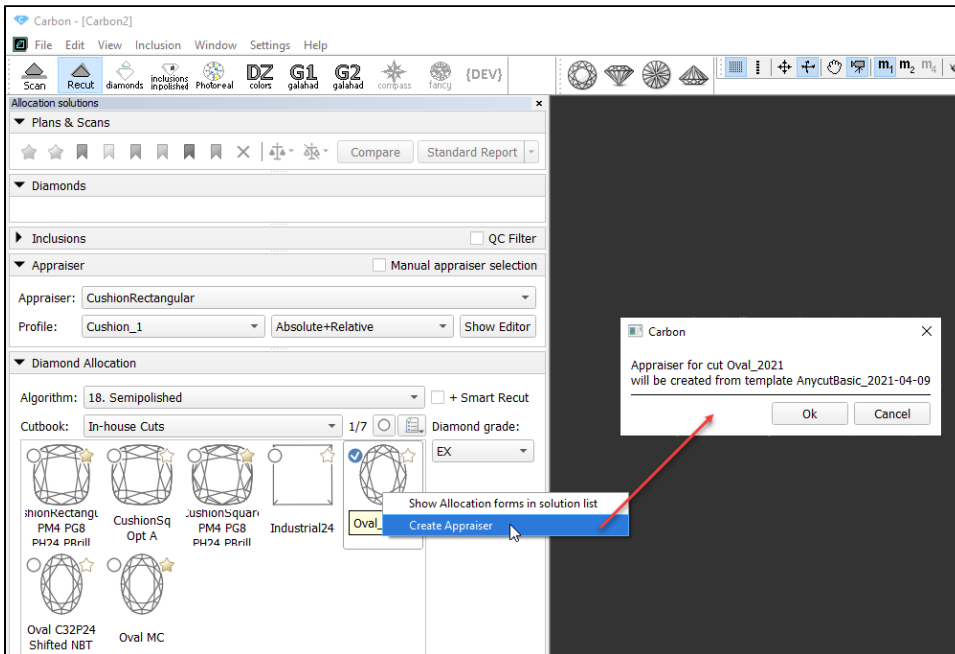
Appraisers for specific in-house cuts

The [workflow](#) using an [in-house cut](#) needs the appraiser/profile(s) tuned in accordance with this cut to get good solutions out of the allocation. With in-house cut you can use:

- "MyAnyCut" appraiser - by modifying one of its 5 editable profiles under this in-house cut
- Appraiser created specifically **for this in-house cut** (such pair is called *in-house cut and its appraiser*)

To create an appraiser for in-house cut:

1. In the **Recut** mode, in the left panel, in the **Diamond Allocation** section, from the **Cutbook** select "In-house Cuts".
2. In the cut list, right-click your cut, and then from the context menu select **Create Appraiser**. The dialog is displayed.



3. In the dialog, read the information about the template and then click **OK**. Your new appraiser is created, named the same as the cut. Two profiles are automatically created for it.



Notes

- * The new appraiser is created by **copying** the template. As for now, the only available template is the "AnycutBasic_2020-12-09" which is identical to the "MyAnyCut".
- * If you previously already created the appraiser for this cut, the system will suggest **rewriting** it - only one "own" appraiser can exist for the cut.

4. In the **Appraiser** section, from the **Appraiser** list, select your appraiser.
5. Select the profile to be edited, then click **Show Editor**. The **Appraiser Editor** window is displayed.
6. In the **Appraiser Editor** set boundaries for your parameters and then click **Apply**. For hints on how to edit profiles, see [Configuring Profiles](#) [here](#).



Pay special attention that the *absolute* part must be filled with the parameters corresponding to your cut.

Carbon - [Carbon2]

File Edit View Inclusion Window Settings Help

Scan Recut diamonds Inclusions Inclusions Photoreal DZ colors G1 galahad G2 galahad compass fancy {DEV}

Allocation solutions

Plans & Scans

Diamonds

Inclusions

QC Filter

Appraiser

Manual appraiser selection

Appraiser: Oval_2021

Profile: Profile1

Diamond Allocation

Algorithm: 18. Semipolished

+ Smart Recut

Cutbook: In-house Cuts 1/7

Diamond grade: EX

Start Allocation

Oval_2021

Oval C32P24

Oval MC

Appraiser Editor

Oval_2021

Profile: Profile1

Show Presets

Parameter	Absolute Cut		Absolute Symmetry		Relative Cut		Relative Symmetry	
	[FR]	[GD]	[VG]	[EX]	[EX]	[VG]	[GD]	[FR]
GirdleRatio	1,28	1,3	1,36	1,37	1,5	1,55	1,6	1,65
Table	55	55,5	56	56,3	63	64	65	66
CrownHeight	11,5	11,5	11,5	11,5	13,85	16	16,5	17,9
GirdleBezel	2,8	2,9	3	3	4,9	5,2	5,9	6,6
PavilionHeight	41	41,2	41,6	41,9	46,95	47,2	47,5	48
TotalHeight	55	56	57	58	63,85	64,7	65,7	67,7
SweetLine	-9	-6	-3	-1,5	1,5	3	6	9

Import... Show difference from: <don't show>

Export Load profile Discard Apply

7. If necessary, set boundaries for the second profile as well.