

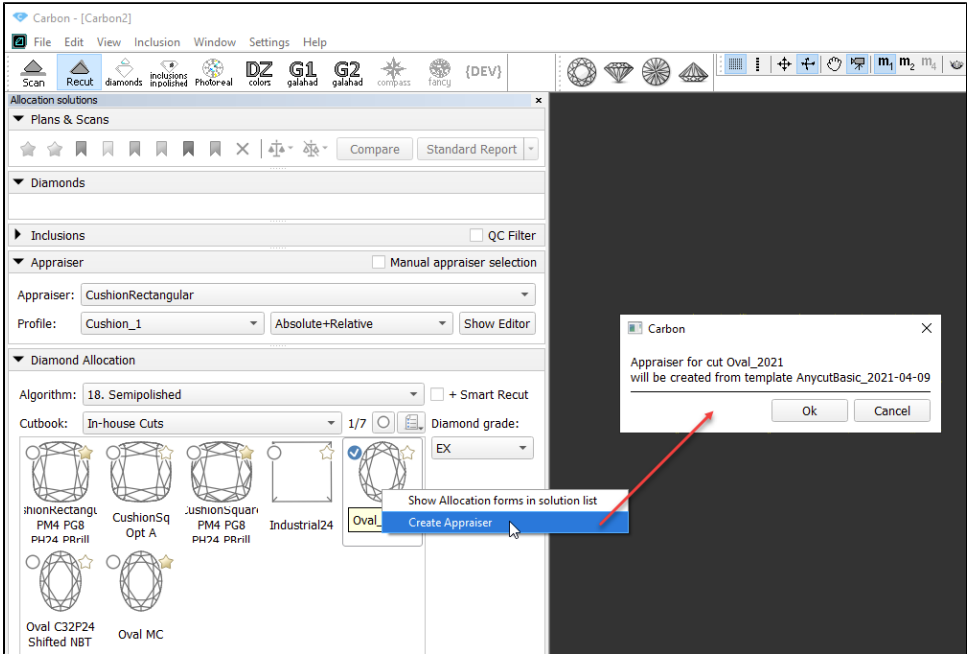
Appraisers for specific in-house cuts

The [workflow](#) using an [in-house cut](#) needs the appraiser/profile(s) tuned in accordance with this cut to get good solutions out of the allocation. With in-house cut you can use:

- "MyAnyCut" appraiser - by modifying one of its 5 editable profiles under this in-house cut
- Appraiser created specifically *for this in-house cut* (such pair is called *in-house cut and its appraiser*)

To create an appraiser for in-house cut:

1. In the **Recut** mode, in the left panel, in the **Diamond Allocation** section, from the **Cutbook** select "In-house Cuts".
2. In the cut list, right-click your cut, and then from the context menu select **Create Appraiser**. The dialog is displayed.



3. In the dialog, read the information about the template and then click **OK**. Your new appraiser is created, named the same as the cut. Two profiles are automatically created for it.

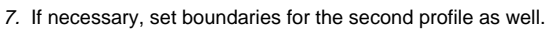
Notes

- * The new appraiser is created by *copying* the template. As for now, the only available template is the "AnycutBasic_2020-12-09" which is identical to the "MyAnyCut".
- * If you previously already created the appraiser for this cut, the system will suggest *rewriting* it - only one "own" appraiser can exist for the cut.

4. In the **Appraiser** section, from the **Appraiser** list, select your appraiser.
5. Select the profile to be edited, then click **Show Editor**. The **Appraiser Editor** window is displayed.
6. In the **Appraiser Editor** set boundaries for your parameters and then click **Apply**. For hints on how to edit profiles, see [Configuring Profiles here](#).



Pay special attention that the *absolute* part must be filled with the parameters corresponding to your cut.



7. If necessary, set boundaries for the second profile as well.