

DZ Color Estimate

On this page:

1 Overview


2 Default olor and manual edit

3 Colors for fancy diamonds

4 Estimate only selected solutions

Overview

DZ color estimate assigns color grades to a series of recut solutions based on the expert estimate for one of them.

 **DZ color estimate** feature of HPOxygen is limited to solutions with Round brilliant cutting and weight up to 1.6 ct. If this does not cover your needs, consider buying the dedicated product [Oxygen D-Z](#).

New solutions produced by the recut procedure are initially assigned the default color grade (H):

Allocation solutions

Plans & Scans

Compare

Standard Report

	#			Price	Cutting	Mass	Yield	Clarity	Color	Gr	Cut	Sym
<input checked="" type="checkbox"/>	Shadow scan			1.1269					UNK	UNK	UNK	
<input type="checkbox"/>	4			8213\$	Brilliant	1.1224	99.39%	VS1	H	EX	EX	EX
<input type="checkbox"/>	2			8213\$	Brilliant	1.1221	99.39%	VS1	H	EX	EX	EX
<input type="checkbox"/>	3			8213\$	Brilliant	1.1216	99.39%	VS1	H	EX	EX	EX
<input type="checkbox"/>	6			8213\$	Brilliant	1.1206	99.39%	VS1	H	EX	EX	EX
<input checked="" type="checkbox"/>	5			8213\$	Brilliant	1.1201	99.39%	VS1	H	EX	EX	EX
<input type="checkbox"/>	7			8213\$	Brilliant	1.1187	99.39%	VS1	H	EX	EX	EX
<input type="checkbox"/>	8			8140\$	Brilliant	1.1163	98.50%	VS1	H	EX	EX	EX
<input type="checkbox"/>	9			8140\$	Brilliant	1.1126	98.50%	VS1	H	EX	EX	EX
<input type="checkbox"/>	1			7993\$	Brilliant	1.0952	96.73%	VS1	H	EX	EX	EX

To assign color grades using DZ color estimate, perform the following steps:

- | Label |
|---|
| |
| Clarity precision |
| <input checked="" type="radio"/> Draft
<input type="radio"/> Precise |
| Duplicate |
| Create copy of 5 |
| Delete |
| Delete solution 5 |
| Diamond Color |
| Estimate color grade for
Plan 5, 1.1201 ct |
| Optical Symmetry |
| Calculate Optical Symmetry |

- Estimate color grade for Brilliant 0.9895 ct.
- Calculate color for all diamonds based on this color estimation: **G 60% / H 40%**
- D E F G H I J K L M N
- Estimation Mode: Fast
- Calculate Cancel

3. As the estimation progresses, the results will show up one by one, until all models in the file (including the active scan) are processed.

[illegible]

4. Once the estimation is completed, the resulting grades become visible in the **Allocation** panel:

Allocation solutions

Plans & Scans

Compare Standard Report

#	Price	Cutting	Mass	Yield	Clarity	Col	Gr	Cut	Sym
<input checked="" type="checkbox"/>	Shadow scan		1.1269			G59/H41	UNK	UNK	UNK
<input type="checkbox"/> 4	9191\$	Brilliant	1.1224	99.39%	VS1	G53/H47	EX	EX	EX
<input type="checkbox"/> 2	9191\$	Brilliant	1.1221	99.39%	VS1	G54/H46	EX	EX	EX
<input type="checkbox"/> 3	8213\$	Brilliant	1.1216	99.39%	VS1	H61/G39	EX	EX	EX
<input type="checkbox"/> 6	8213\$	Brilliant	1.1206	99.39%	VS1	H55/G45	EX	EX	EX
<input checked="" type="checkbox"/> 5	9191\$	Brilliant	1.1201	99.39%	VS1	G72/H28	EX	EX	EX
<input type="checkbox"/> 7	8213\$	Brilliant	1.1187	99.39%	VS1	H72/G28	EX	EX	EX
<input type="checkbox"/> 8	8140\$	Brilliant	1.1163	98.50%	VS1	H60/G40	EX	EX	EX
<input type="checkbox"/> 9	8140\$	Brilliant	1.1126	98.50%	VS1	H63/G37	EX	EX	EX
<input type="checkbox"/> 1	7993\$	Brilliant	1.0952	96.73%	VS1	H84/G16	EX	EX	EX

5. To revisit the page with the color grading results afterwards, use the button on the main panel:



Default olor and manual edit

The colors can be set both as the default system value and changed manually for the specific model.

Default Setting

Default Diamond Clarity & Color

Select default color: Fancy

Select default clarity for clear diamonds: VS1

The value means the desired clarity to be assigned to newly allocated clear diamonds.

Please notice: this value is ignored when your project has inclusions with better clarity. In this case the clarity of newly allocated clear diamonds correspond to smallest inclusion specified in your project.

Manual Editing

Brilliant 1

Shape Brilliant Grade Weight 0.92 ct Vivid VS1

Proportions Advanced Advanced 2 Advanced 3 Advanced 4 Advanced 5 Advanced 6

Crown angle	35.00 °	Girdle ratio	1.000
Pavilion angle	41.00 °	Diameter	6.28 mm
Table	61.5 %	Alt. diameter	6.28 mm
Crown height	13.5 %	Total depth	60.5 %
Girdle (bezel)	3.6 %	Kozibe	15.13 °
Pavil.depth(mains)	43.5 %	FishEye	89.3 %

Unlock cut parameters Step: Fine Rough

Settings > Color and lighting settings

Select the solution, then View > Show parameters panel, unlock the parameters, then edit as displayed on the picture. The price will be updated.

Colors for fancy diamonds

!

This functionality is currently available only under the special "DeveloperBetaPlus" HASP key.



The **DZ** list of colors includes Fancy diamonds colors:

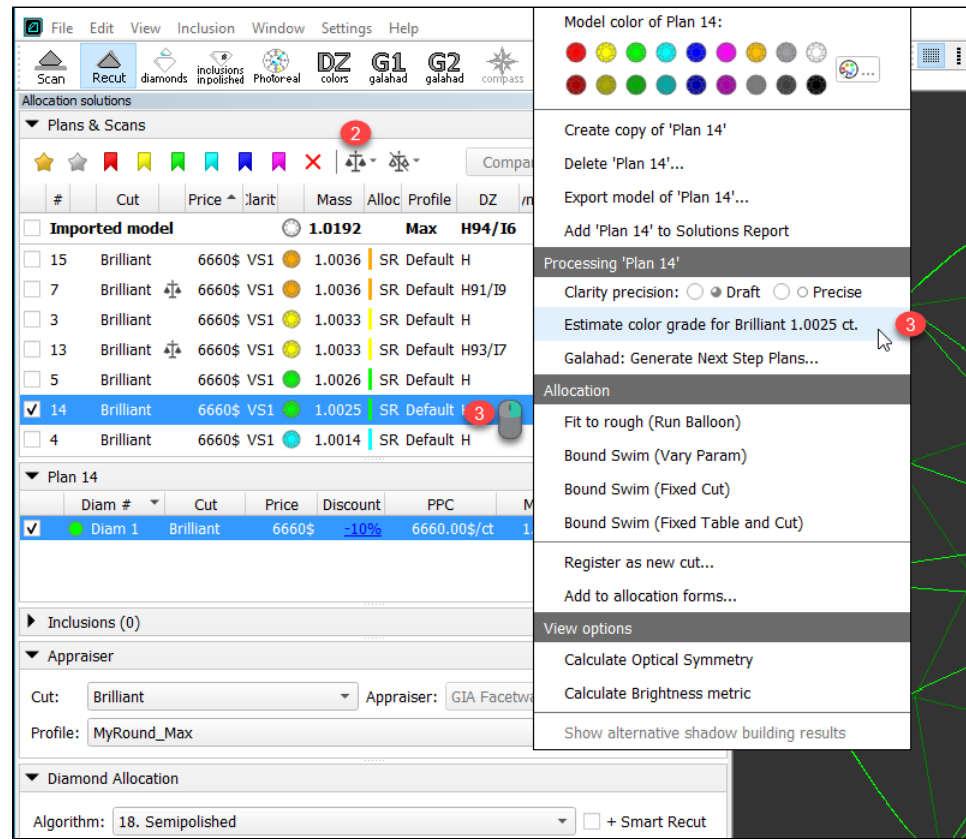
- Vivid
- Fancy
- Light
- Dull

Estimate only selected solutions

You are able to obtain the DZ color estimation only for the selected solutions.

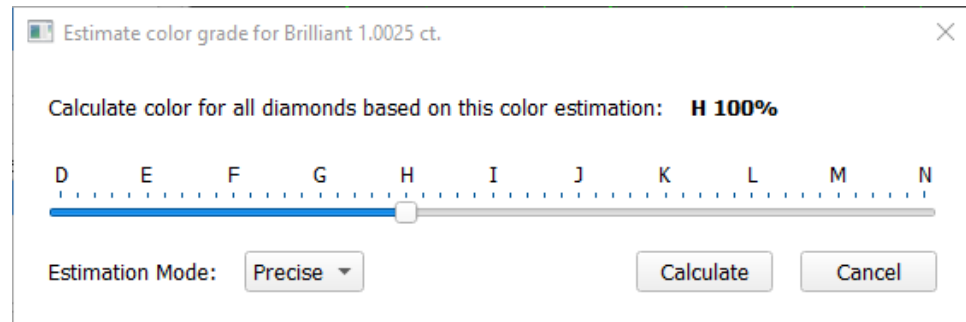
To do that:

1. In the solution list, select the checkboxes to the right of the solutions you want to get an estimation for.
2. On the toolbar of the **Plans & Scans** section, click the  **Add solution(s) to Solutions Report** button. The solutions are marked with .
3. In the solution list, right-click the solutions you want to start estimation from and then select **Estimate color grade for ...**



The estimate dialog is displayed.

4. In the estimate dialog, set color estimation for your starting solution and the **Estimation Mode**.



5. Click **Calculate**. The system switches to the **DZ colors** mode and displays the progress. As soon as the calculation for the selected solutions is finished, their results are displayed in the table.

