


2021.06.29 - Helium Rough/Pacor Client 7.3.3

Here you can find information about what is new in Helium Rough/Pacor Client 7.3.3.

 This version is available for [download](#) from the Octonus official web site.

On this page:

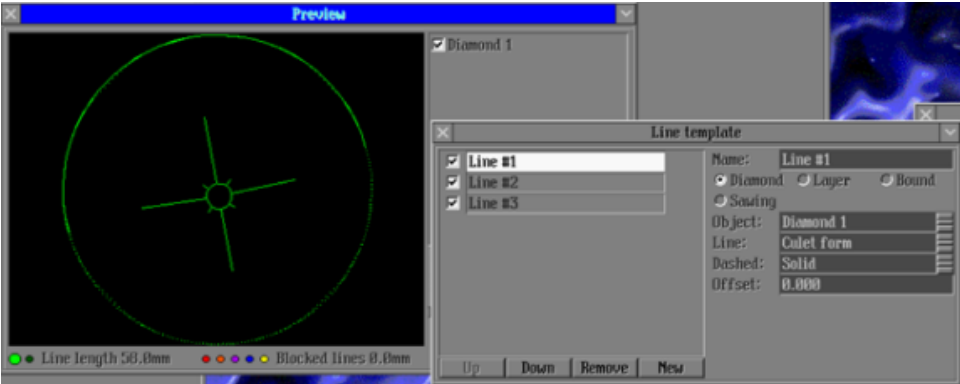
1 [Culet form marking - extended lines](#)

2 [Fixed problems and improvements](#)

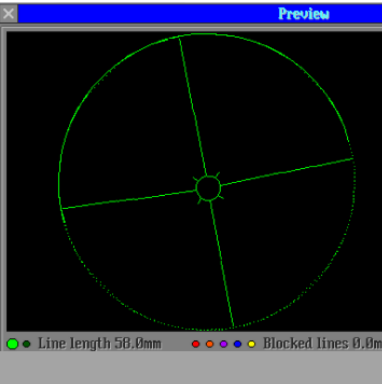
Culet form marking - extended lines

The lines used for culet form marking now can be extended up to the girdle. To switch to the mode with extended lines, set **Line** to "Wide culet form":

Old Mode



New Mode

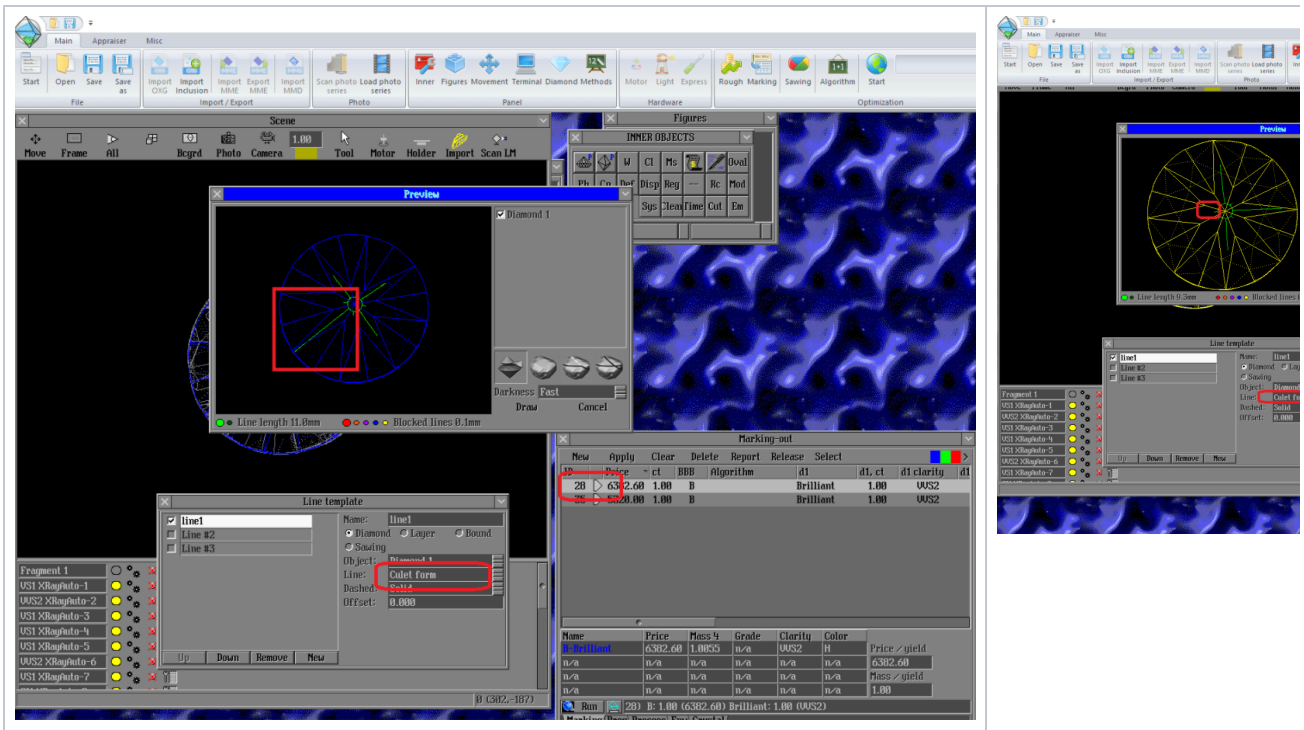


Note that the old "Culet form" mode also stays available.

Fixed problems and improvements

The following fixes for the known problems and improvements are implemented:

- There were anomalies in the culet form lines - now the problem causing these problems was fixed.



- Building models did not work correctly for polished diamonds - now this problem is fixed.
- Inclusions saved in a Helium Rough/Pacor Client project (OX2Z) were incorrectly editable when opening in other software (MBox, HP Carbon) - now this problem is fixed, inclusions are not editable which is the right behavior.
- Inclusions actually outside the allocated diamond were mistakenly visualized as located inside the model - now this problem is fixed.
- Boundary planes were not imported from the earlier models during Recognition - now this problem is fixed.
- Sandwich inclusions saved in a Helium Rough/Pacor Client project (OX2Z) were not displayed in HP Carbon - now this problem is fixed.
- Laser mapping slowdown in 7.2.X comparing to 6.0.X was fixed.
- Not working Find Next Diamond operation is fixed.