

2023-12-19 - Cutwise 6.7

Here you can find information about what is new in Cutwise version 6.7

On this page:
<div><div><div>1. Cutwise Widgets Improvements</div><div><div>1.1. Widget Clarity tab improvements</div><div>1.2. New settings to select widget tabs</div></div></div><div><div>2. Cut Evolution, HP Carbon Projects Improvements</div><div><div>2.1. Inclusions plotting chart in Carbon Viewer</div><div>2.2. Fire Photo is added to Only Photo data set in CutEvolution Rendering</div><div>2.3 Rendered videos have black background</div></div></div><div><div>3. Other Improvements</div><div><div>3.1. Authorization System was updated</div><div>3.2. SKU field was added to collections</div><div>3.3. Optical Performance calculation is blocked for old DiBox Software</div><div>3.4. Bugfixes</div></div></div></div>

1. Cutwise Widgets Improvements

Your browser does not support the HTML5 video element

1.1. Widget Clarity tab improvements

Widget clarity tab is now similar to one on Cutwise page:

1. Different inclusions types are highlighted when mouse is over inclusion type.

2. Office photo with inclusions overlay is shown

3. Fullscreen improvements

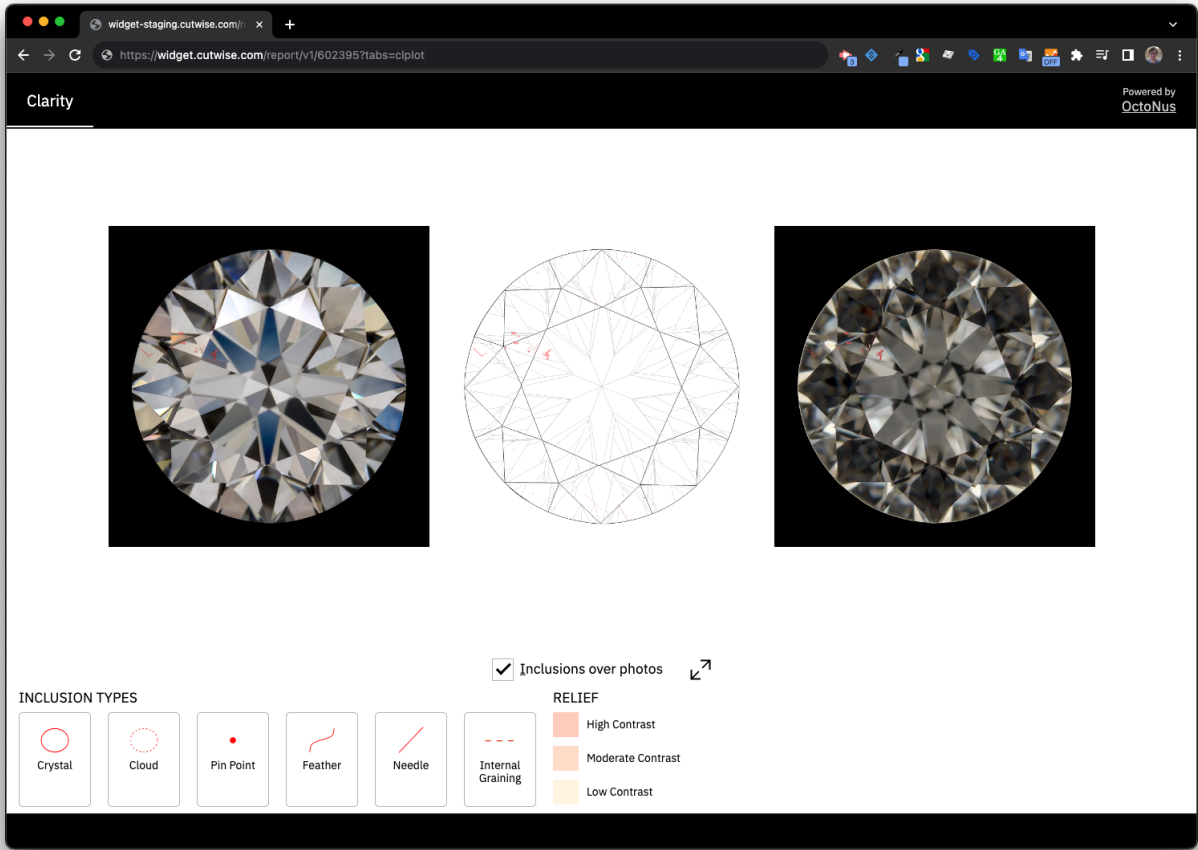
<https://widget.cutwise.com/performance/v1/602395?tabs=clplot#clplot>

<https://widget.cutwise.com/report/v1/602395?tabs=clplot#clplot>

1.2. New settings to select widget tabs

One or more widget tabs can be selected by using new URL option **tabs**.

For example only Clarity tab in Report widget:



<https://widget.cutwise.com/report/v1/602395?tabs=clplot#clplot>

or Fire, Brilliance, Optycal Symmetry tabs in Performance Widget:

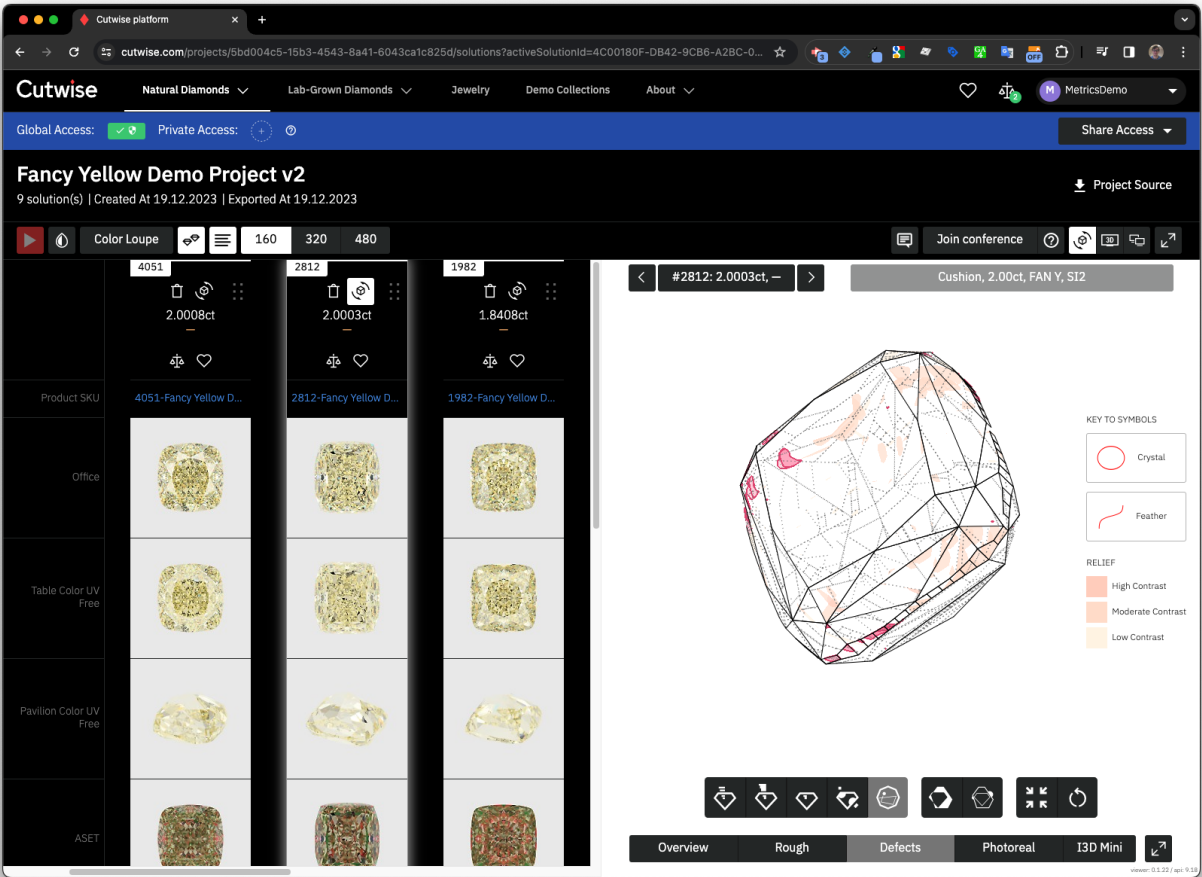
<https://widget.cutwise.com/performance/v1/602395?tabs=fire,bril,osym#fire>

Details documentation: [How to Use Cutwise Widget#Parameters](#)

2. Cut Evolution, HP Carbon Projects Improvements

2.1. Inclusions plotting chart in Carbon Viewer

Inclusions plotting chart in Carbon Viewer is available for all Cutwise users for projects from HPC 1.9.2 and higher.

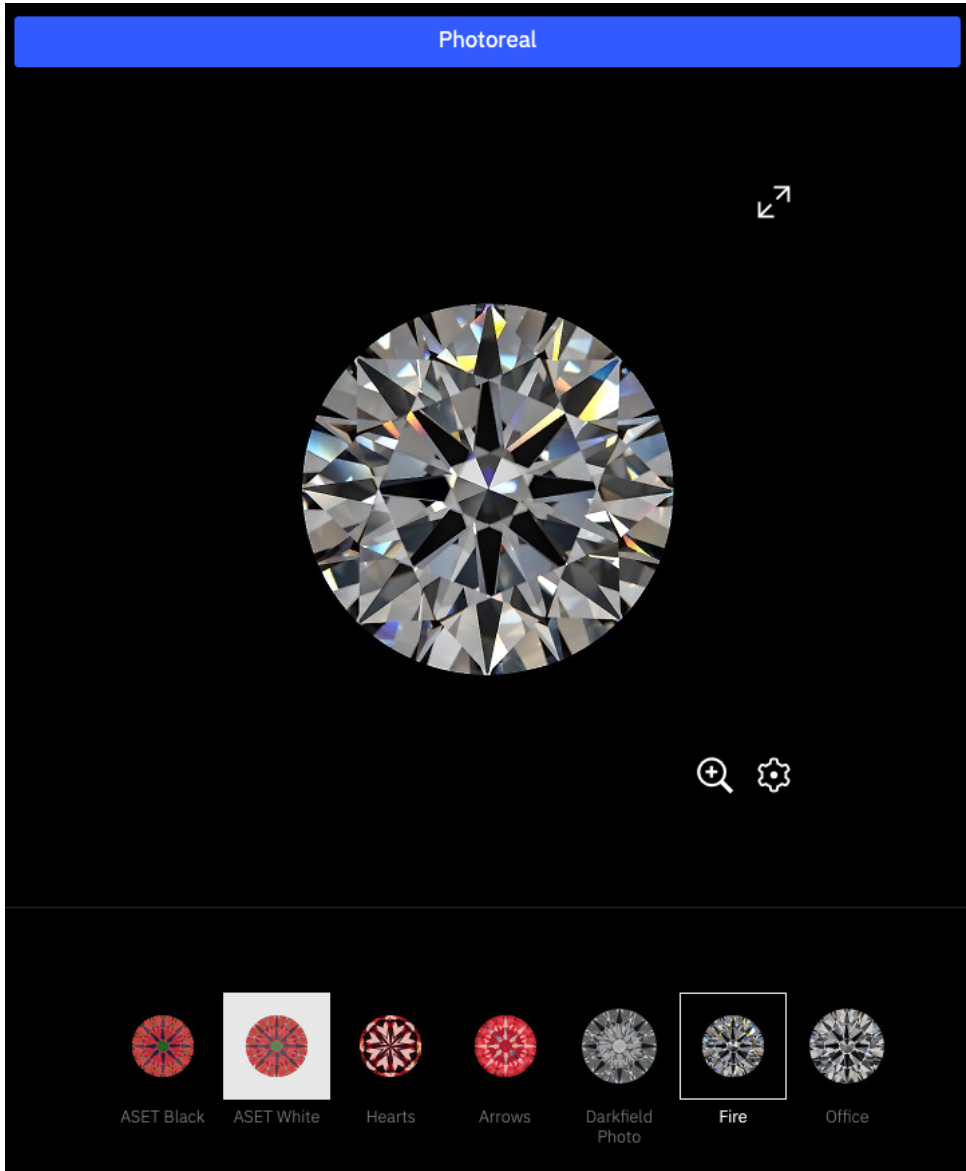


https://cutwise.com/projects/5bd004c5-15b3-4543-8a41-6043ca1c825d/solutions?activeSolutionId=4C00180F-DB42-9CB6-A2BC-09A9BA7A8285&activeProductId=735143&viewMode=VIEW_MODE_PHOTOREAL_REPROJECTION

2.2. Fire Photo is added to Only Photo data set in CutEvolution Rendering

Only photo data set is rendered automatically after uploading new project. Fire photo will appear for Colorless DZ diamonds.

It will be used as preview in DiLog.



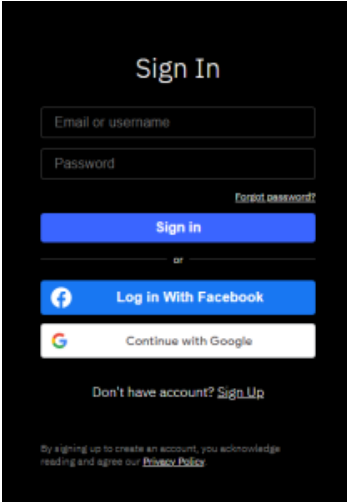
2.3 Rendered videos have black background

Fire and office videos now have black background

3. Other Improvements

3.1. Authorization System was updated

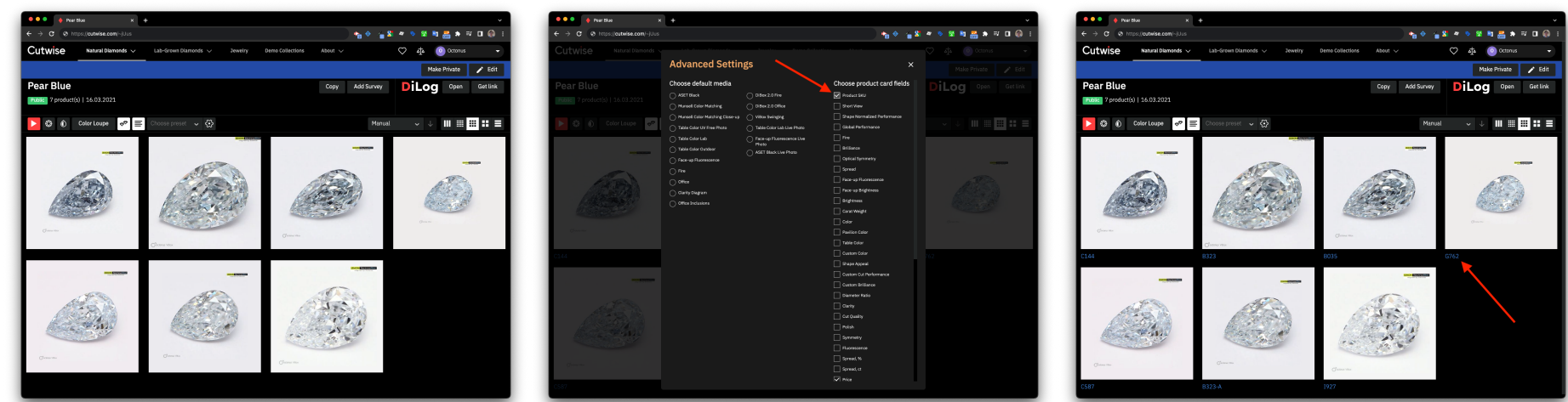
New authorization UI with Social Networks sign in improvements



⚠ Please pay attention to the recommended method for passing an access token in Cutwise API requests: <https://api-doc.cutwise.com>

3.2. SKU field was added to collections

SKU field can be added to collections view.



3.3. Optical Performance calculation is blocked for old DiBox Software

Optical Scores are calculated only for data uploaded from DiBox Software 6.x and higher that contains brightness and calibration checks to ensure correct performance calculation.

3.4. Bugfixes