

Cloud Uploader 2.6.26

- [Main features](#)
- [System requirements](#)
- [Starting program](#)
- [Uploading data to the Cutwise](#)
 - [Uploading ViBox videos / DiBox images](#)
 - [Way 1 \(preferable\). Export files from ViBox/DiBox](#)
 - [Way 2. Copying exported files manually](#)
 - [Uploading HP reports](#)
- [Uploading status](#)
 - [Successful uploading](#)
 - [Errors during uploading](#)
 - [Problems with Internet connection](#)
 - [Unsupported files, Cloud Server errors, internal Uploader errors](#)
- [Log, Settings, Manual](#)

Main features

Batch uploading of ViBox videos, DiBox images and HP reports to the Cutwise Catalog.

System requirements

Operating system	Microsoft Windows XP or later (x86 or x64)
Internet connection	

Starting program

Launch the file "Cloud Uploader.exe". If you run the Cloud Uploader for the first time, please, identify yourself in the appeared form and type your b2b ID and b2b secret key (we will give you the b2b ID and the b2b secret by e-mail).

[blocked URL](#)

Next, press "Login". After that, the Cloud Uploader will minimize to the system tray:

[blocked URL](#) or [blocked URL](#)

At the first start of the Uploader you see the window with local folders settings.

(1) Enter a path to the folder where the Cloud Uploader will wait data that you want to upload to the Cutwise.

(2) Enter a path to the folder where successfully uploaded files will be moved.

(3) Enter a path to the folder where rejected or failed uploaded files will be moved.

Please, do not use these folders as permanent storage for your stones images and videos. And periodically clean folders (2) and (3), because the Cloud Uploader does not clean them by itself.

Later you can change paths to local folders in "Settings":

[blocked URL](#)

After specifying the folders click "Save changes".

Uploading data to the Cutwise

Uploading ViBox videos / DiBox images

There are two ways to upload videos from ViBox and images from DiBox to the Cutwise through using the Cloud Uploader: export files from ViBox/DiBox with checked 'Upload video to cloud' or copy exported files from ViBox/DiBox to the folder (1) manually.

Way 1 (preferable). Export files from ViBox/DiBox

Please note that only videos with 200 frames are supported for uploading to the Cloud now.

Check the 'Upload to cloud' checkbox in ViBox/DiBox before exporting:

[blocked URL](#)

Then export videos from ViBox / images from DiBox to the folder where you usually export media from ViBox/DiBox (**please, do not use the folder (1) as the exported data folder**). Next, ViBox/DiBox will automatically copy your exported files to the folder (1) and the Cloud Uploader immediately will start analyzing and uploading your files.

Way 2. Copying exported files manually

If you have to upload to the Cloud videos exported from ViBox or images from DiBox created on a computer without Internet connection, you can do it by copying these files to the folder (1) manually.

Uploading HP reports

After saving HP report it will be opened in your browser. Do the next steps for uploading report to the Cutwise:

1. Click on 'Save page as' in your browser menu.
2. In the appeared saving dialog select folder (1) and create in it folder with the same name as your StoneID.
3. Click on 'Save' button.

After these steps CloudUploader will automatically upload report to the Cutwise.

You can also copy your HP reports manually from your reports storage to folder (1) for uploading to the Cutwise. But remember to create separate folders for every separate HP report with stoneID as folder name.

Uploading status

Successful uploading

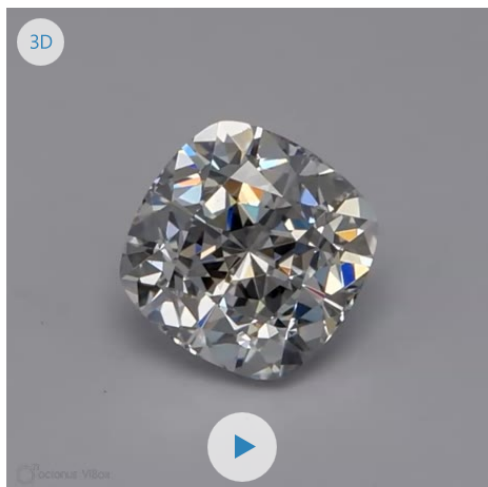
In case of successful uploading of a file or a folder it will be moved from the folder (1) to the folder (2) and you will see a notification from the system tray:

[blocked URL](#)

You can check whether exported file is successfully uploaded with its params to the Cloud by clicking on the notification. In case of successful uploading you'll see a page in your Internet browser like the picture below with your video or image and its metadata:

Stone ID	100712808459
Seller	Garry

Manufacturer	N/A
Listed	06.08.2014
Price	Please Sign in or Sign up



Grade

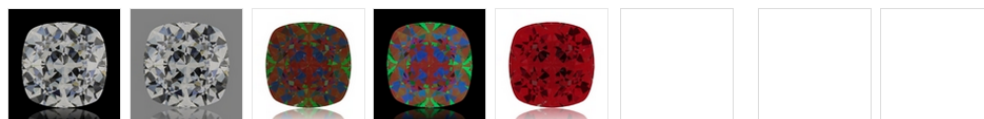
Lab	GIA Certified	Check Online >
Shape	Cushion	
Carats	0.48	
Color	F	
Clarity	VS1	Crystal, Cloud, Needle
Cut	N/A	
Polish	Excellent	
Symmetry	Excellent	
Fluorescence	None	
Girdle	Thick to Very Thick, Faceted	
Culet	None	

Standart Movies Custom Movies

Seller Notes

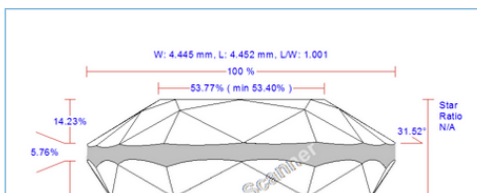


DiBox gallery




Polish Data

Width x Length	4.445 x 4.452 mm	
Total Depth	71.5 %	3.178 mm
Spread	-27.28 %	-0.1 ct
Table	53.77 %	2.392 mm
Crown Angle	31.78 °	



After a successful upload you could Sign In into your Cutwise account in your browser using Cutwise Front Page <http://cutwise.com>.

You will see your newly uploaded stone in "Listings" section.


Cutwise
My Account ▾

Profile
Searches
Listings
Contacts
Sharings
Statistics

Status
Colorless

Created Date ▾
Listed Date
Completeness

25 diamonds meet current filters

Publish
Unpublish
Share with Customer
Delete

<input type="checkbox"/>	Stone ID	Shape	Cut	Carat	Clr	Clarity	Spread	Depth	Table	L x W	Lab	Sym	Pol	Flr	\$ B2B ...	\$/ct	Listed Date	Media	Published	Edit
<input type="checkbox"/>	MSSRBC18	Round	VG	0.74	F	VS2	–	–	–	–	–	–	–	–	N/A	N/A	02.04.2015			
<input type="checkbox"/>	MSSCUSHIO...	Cushion	VG	0.85	J	SI1	-11.32 %	52.9%	55%	5.6 x 5.5	–	VG	EX	N	N/A	N/A	04.01.2015			
<input type="checkbox"/>	MSSCUSHIO...	Cushion	EX	1.03	F	SI2	-14.67 %	50.1%	54%	5.9 x 5.9	–	EX	EX	N	N/A	N/A	04.01.2015			

After checking stone's data and optionally filling additional data using "Edit" (pencil) button you could Publish it and it would appear at Cutwise listing (<http://cutwise.com>).

Cutwise

My Account

Previous

Add to compare

Add to wishlist

Save

Cancel

Next

General Properties

Listed On: 02.04.2015

Stone ID

MSSRBC18

Manufacturer

Seller

MSS

B2B price

\$ 0

\$ N/A / ct

Retail price

\$ 0

\$ N/A / ct

3D

Standard Movies

Custom Movies

Share +

Grade

Lab

N/A

Shape

Round

Carat Weight

0.74

Color

F

Clarity

VS2

Cut

Very Good

Polish

N/A

Symmetry

N/A

Fluorescence

N/A

Girdle

N/A

N/A

N/A

Culet

N/A

Seller Notes

DiBox Gallery

Polish Data

Length x Width

N/A

x

N/A

mm

Total Depth

N/A

%

N/A

mm

Published

Save

Cancel

If you have already logged in you can use the link to the stone editing page provided in the Log (see 'Log and Settings' section below).

Errors during uploading

Problems with Internet connection

If during the uploading of files there is no Internet connection the Cloud Uploader will show you the message from the system tray:

[blocked URL](#)

Connect to the Internet and the Cloud Uploader will continue its analyzing and uploading processes automatically.

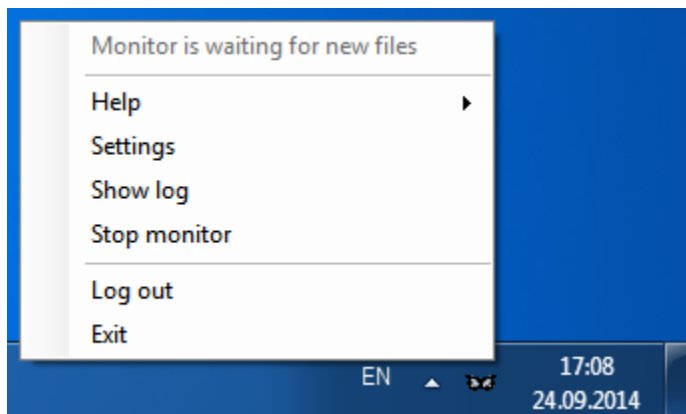
Unsupported files, Cloud Server errors, internal Uploader errors

In case of these errors the file for uploading will be moved to the folder (3) and you will see a notification:

[blocked URL](#)

Log, Settings, Manual

Click left or right mouse button on the Cloud Uploader icon in the system tray and you will see the main menu:



- Top line shows the current working status of the Cloud Uploader.
- In 'Help' section now you can find only link to this User Manual.
- Next, in "Settings" you can change paths to local folders.
- Next, in "Show Log" you can see details of the Cloud Uploader work:

blocked URL

- Successful files uploading events will be marked green. You can find links to uploaded files to the Cloud in rows with these events in the 'URL' column.
- Errors in the Cloud Uploader work will be marked by red.
- Also in the main menu you can start/stop the Uploader. By default, the Uploader is on.
- You can log out and exit from the Cloud Uploader using two bottom menu