

Girdle center and Girdle center mass

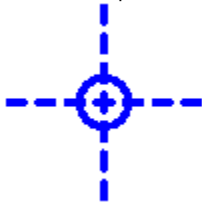
- [1. Introduction](#)
- [2. Girdle center mass](#)
- [3. Girdle center](#)
- [4. Switch between Girdle center mass and Girdle center usage in calculations](#)
- [5. Notes](#)

1. Introduction

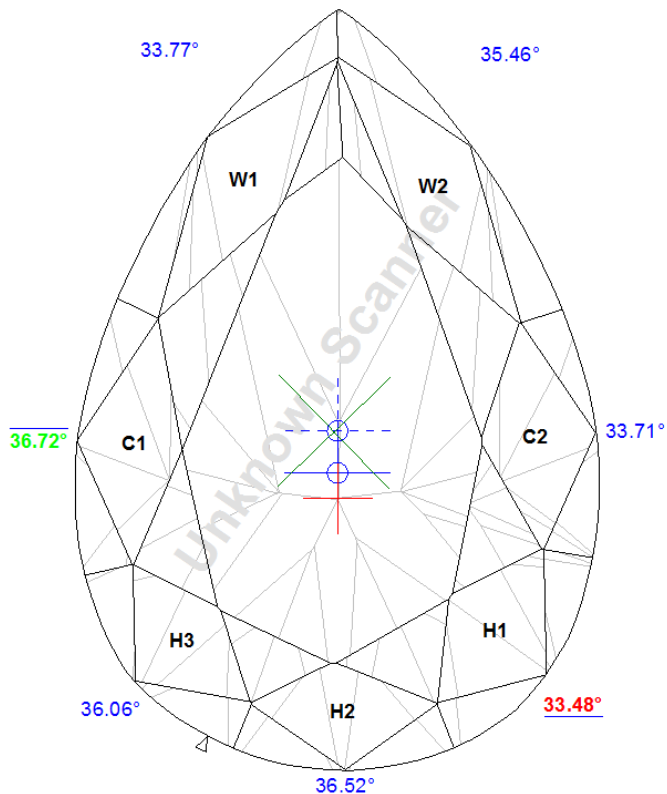
There are new parameters for girdle center calculation - *Girdle center mass*. It is used for offsets calculations from **report.dll 2.6.6.1** version by default.

2. Girdle center mass

1. Indicated on pictures as dotted blue cross (bookmark for this picture is GIRDLE_CENTER_MASS_CROSS):



2. Example on picture from report:



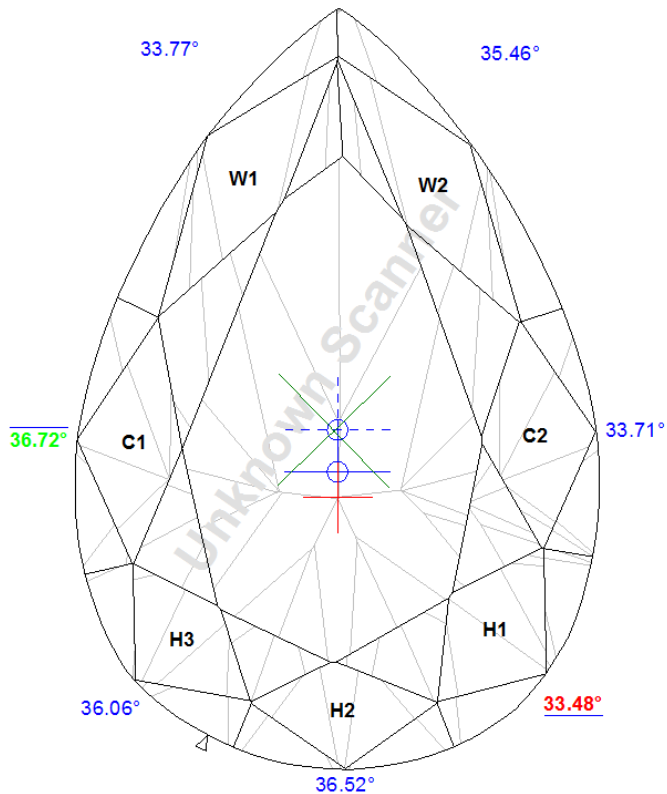
3. Calculated as center mass of girdle in projection on table plane.
4. Used by default for calculation following values:
 - a. Girdle-Culet offset by table axis
 - b. Girdle-Table offset by table axis
 - c. Girdle to table-culet line offset
 - d. 2*radius roundness

3. Girdle center

1. Indicated on pictures as solid blue cross (bookmark for this picture is GIRDLE_CENTER_CROSS):



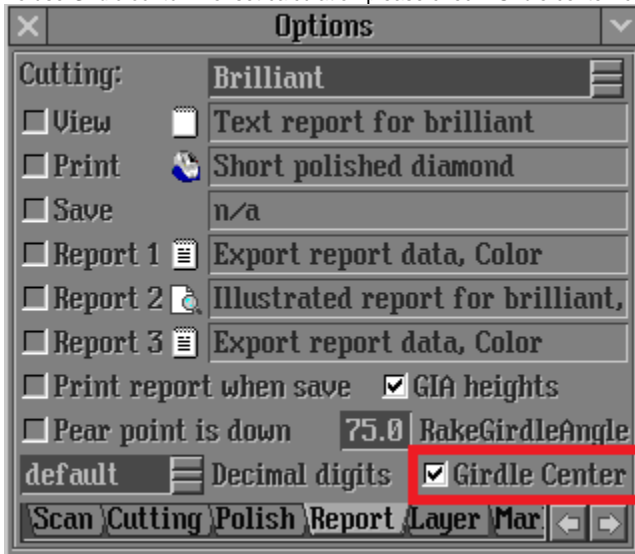
2. Example on picture from report:



3. Calculated in following way:
 - a. For Princess, StepCuts, Radiant, SquareRadiant, SquareStepCut, Oval and Marquise cuttings it calculates as cross of symmetry axes.
 - b. For Pear and Heart cutting it is cross of symmetry axis with width axis.
 - c. For RBC and TriangleStepCut it is center of maximum circle that may be inscribed.
 - d. For Cushion and Unknown cut it is center mass of model projection on table plane (equal to girdle center mass).
4. Shown on pictures but do not used for calculation by default.

4. Switch between Girdle center mass and Girdle center usage in calculations

1. To use *Girdle center* in offset calculation please check "Girdle center" check box in "Report options" panel:



2. To save this option setup:

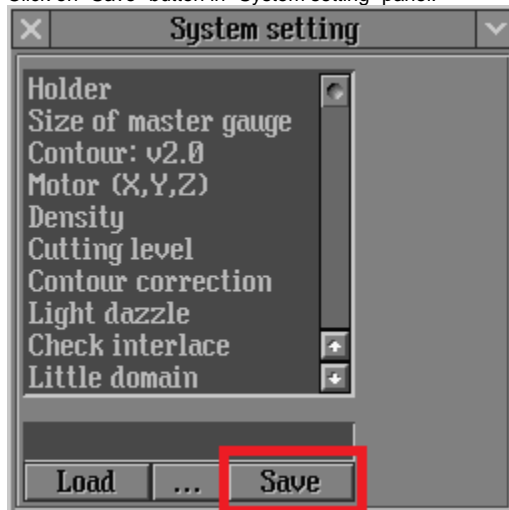
- a. Click on "INNER" option from top menu:



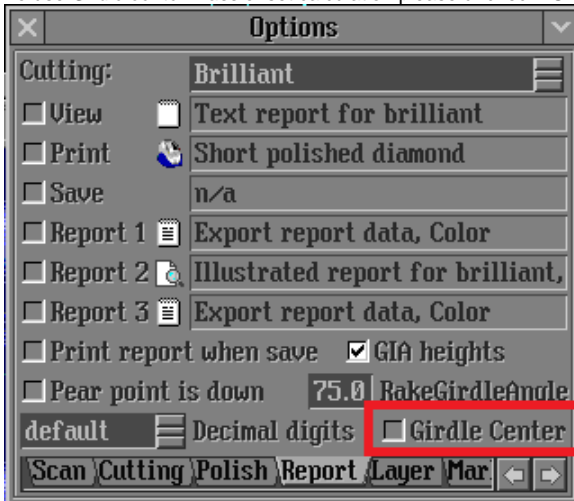
- b. Click on "Reg" button in "INNER OBJECTS" panel:



- c. Click on "Save" button in "System setting" panel:



3. To use *Girdle center mass offset* calculation please uncheck "Girdle center" check box in "Report options" panel:



5. Notes

- Please use **report.dll 2.6.6.1 or higher** to see features described in the manual
- If you have any question, please ask it in comments or send e-mail to developer.
- If you find mistake, please describe it in comments or send e-mail to developer.