

Open data in the same view

- [Adding new data layer to a view](#)
 - [Adding not previously opened data from OSV](#)
 - [Drag and drop previously opened data](#)
 - [Drag and drop files from Windows Explorer to view](#)
- [Layers control panel](#)

In the OctoNus Stereo Viewer program you can open any number of data files in the same view. Hereinafter we name these data view items **layers**.

Adding new data layer to a view

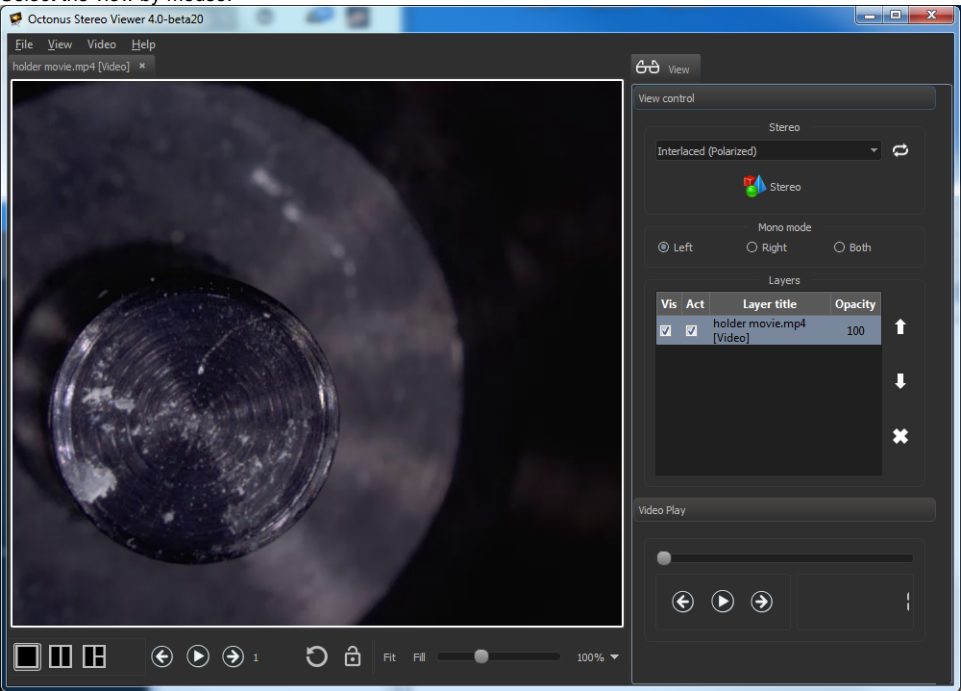
You have three ways to add new data layer to a view:

1. adding not previously opened data from the OSV interface;
2. drag and drop previously opened data from services section to a view;
3. drag and drop files from Windows Explorer directly to a view.

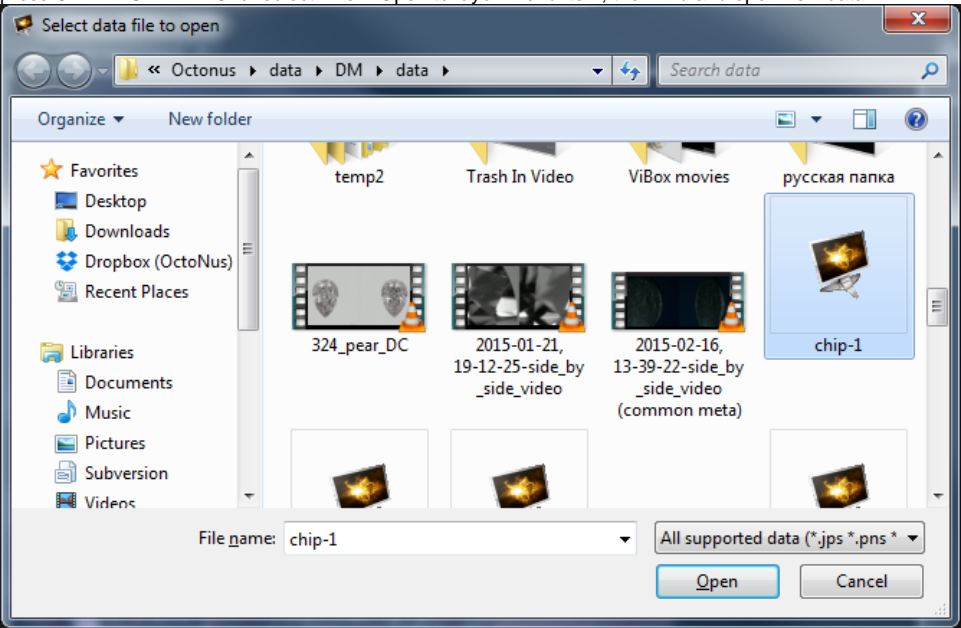
Adding not previously opened data from OSV

To add new data as a layer to the view do next steps:

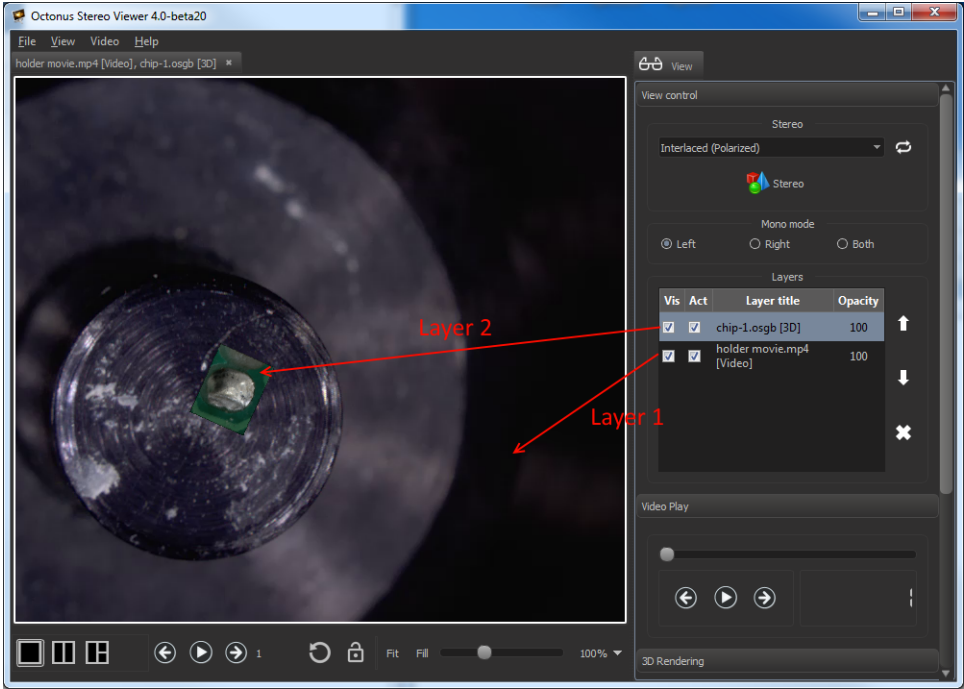
1. Select the view by mouse:



2. press CTRL + SHIFT + 'O' or select 'File > Open to layer' menu item, then find and open new data:

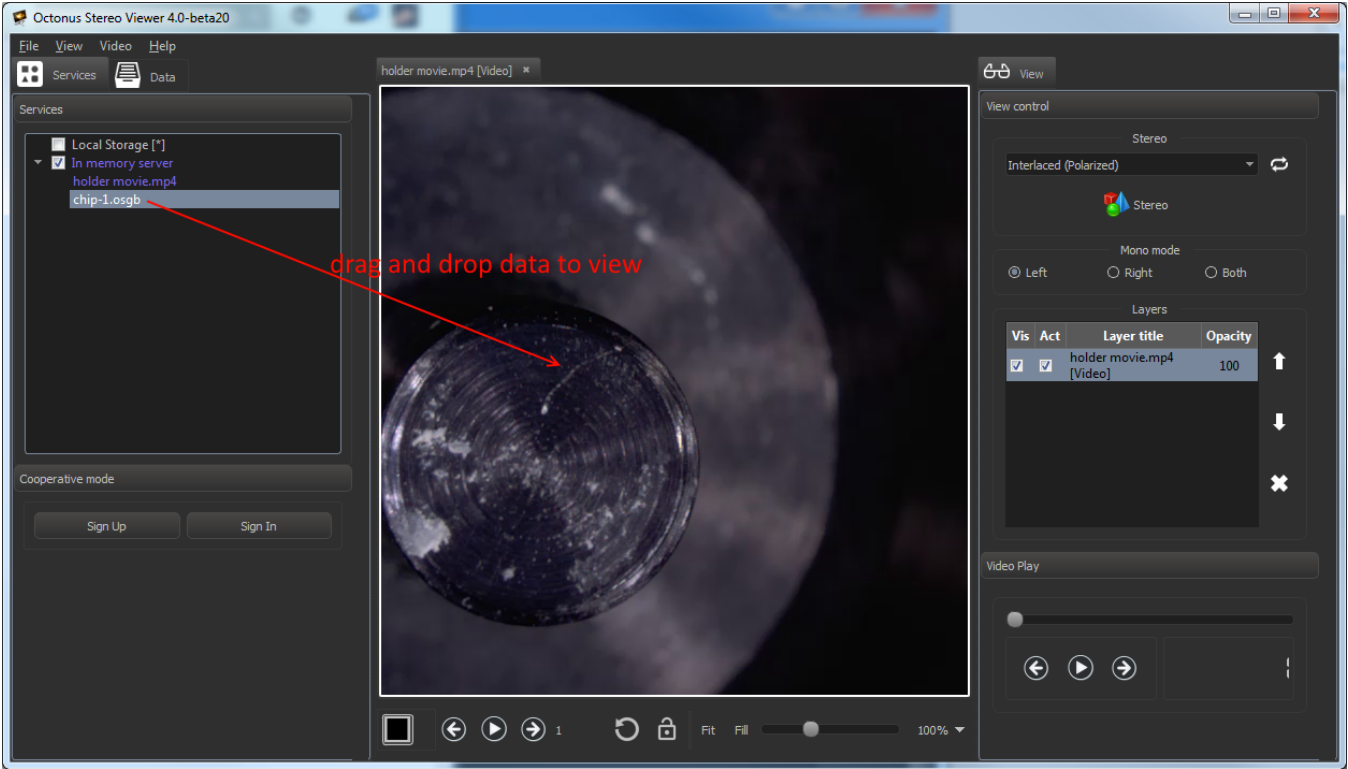


3. You'll see new selected data above the old view data:



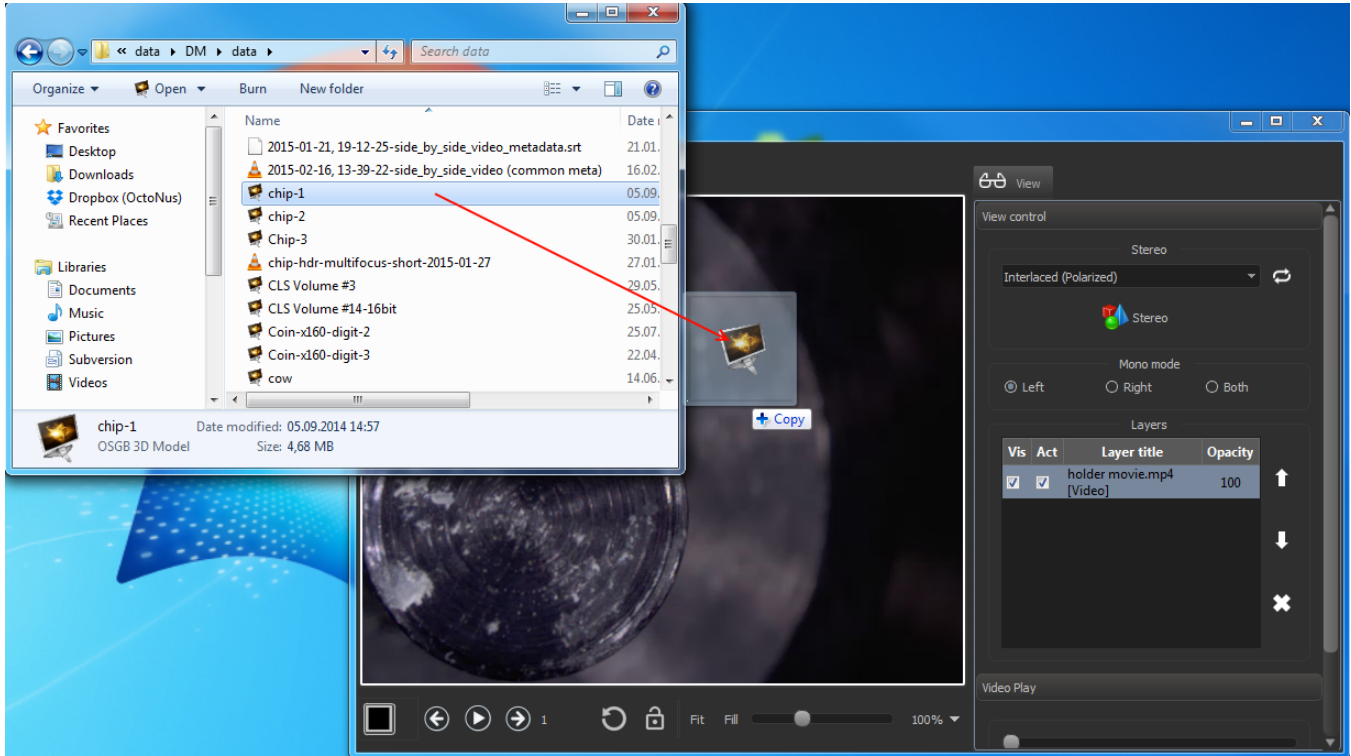
Drag and drop previously opened data

You can also drag previously opened data and drop it to view with already dropped data files to add it as new view layer:



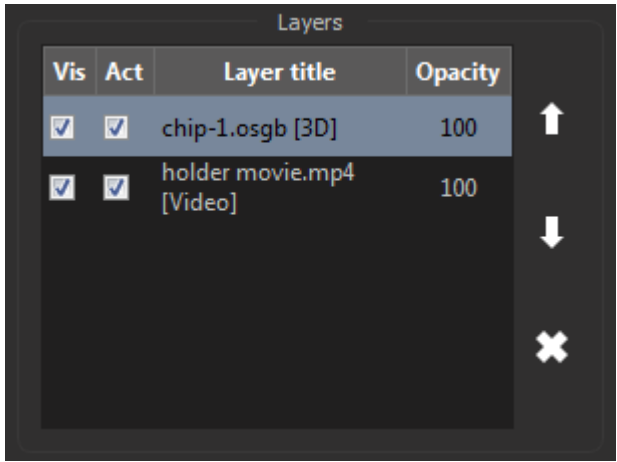
Drag and drop files from Windows Explorer to view




OctoNus Stereo Viewer supports drag and drop operation for files of supported types from Windows Explorer directly to the view as a new layer:



Layers control panel

Layers panel is located at the right program panel in the section 'View control':



- To select layer, click on it in the Layers table.
- To delete layer, press  button.
- To change layers order use  and  buttons.
- Checkbox 'Act' means 'Active'. Active layers process mouse events, unactive layers don't.
- Check or uncheck 'Vis' checkbox to change layer visibility.

- To change opacity do left mouse double click on layer opacity value. You should see the seekbar . Move the slider on the seekbar by mouse or by keys LEFT ARROW and RIGHT ARROW and press Enter to change opacity.