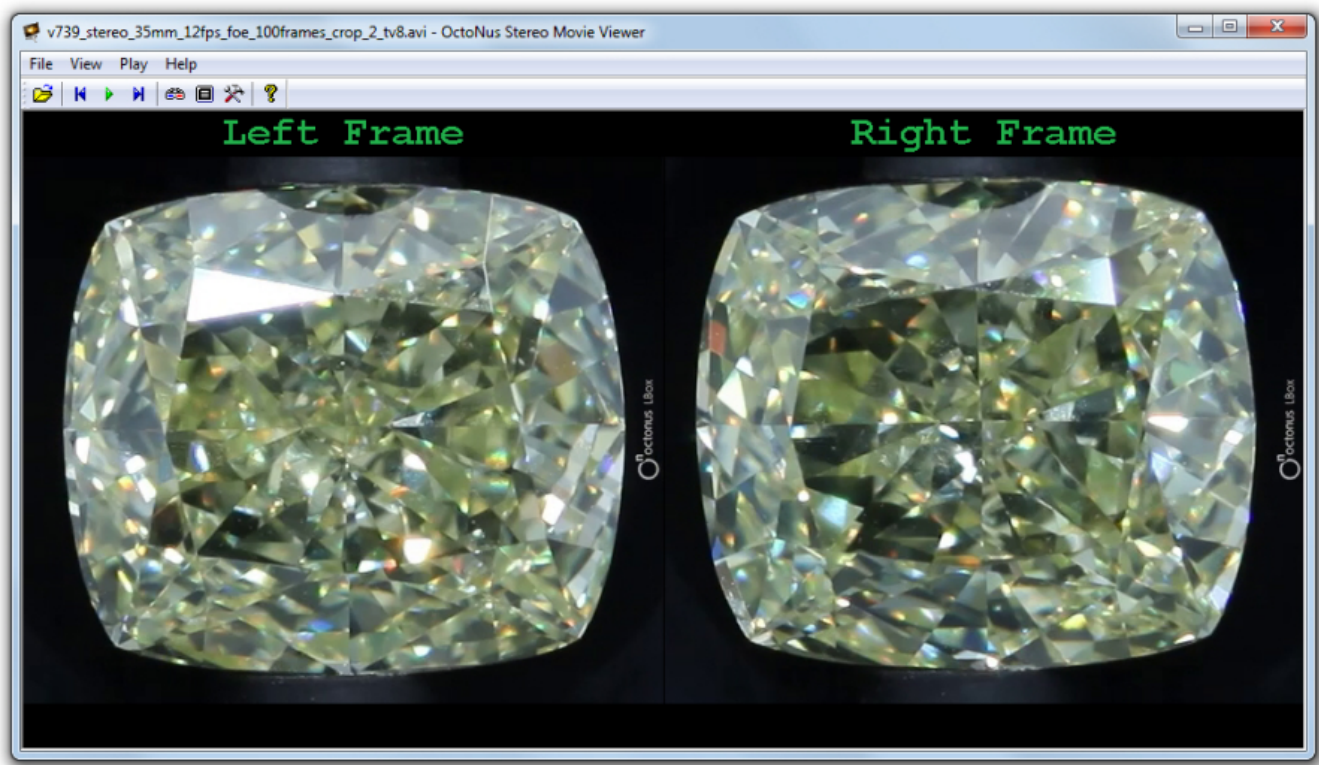
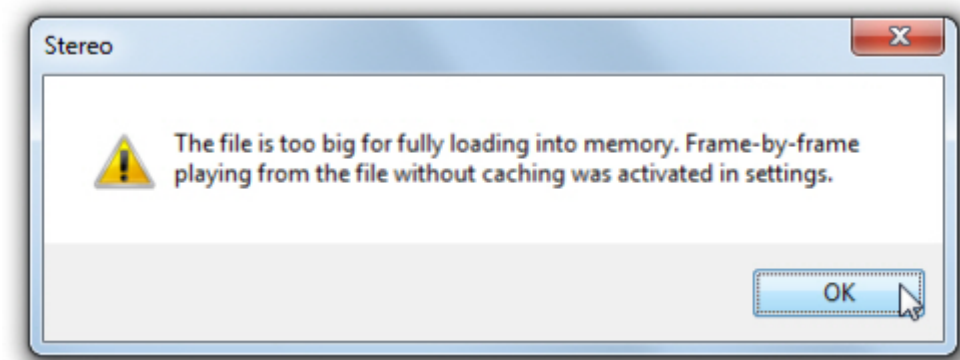


Stereo Viewer 3.0 Release Notes

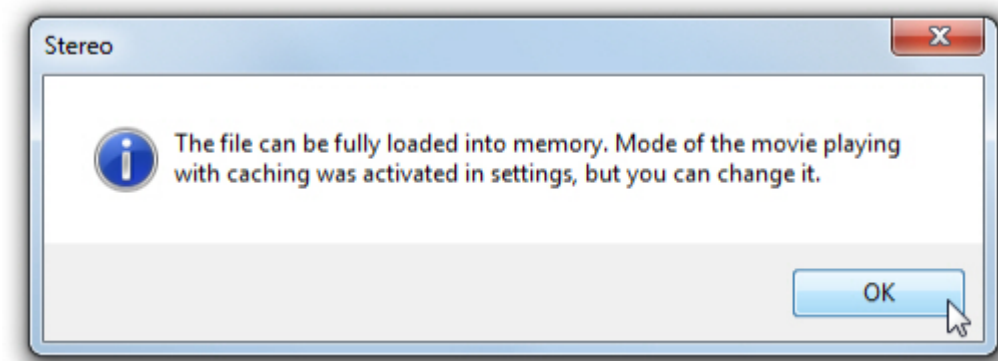
Playing MOV and AVI movies



The new Stereo Movie Viewer supports playing **MOV** and **AVI** stereo movies from LBox. If you use **Style Memory** in **Settings** dialog, but the opened file is too big for fully loading into memory, then **Style File** will be activated and you can't change the playing style. In such a case, you will see the following warning message:



Otherwise, if you use **Style File**, but the opened file can be fully loaded into memory, then **Style Memory** will be activated. You can change the playing style whenever you want. In this case you will see the following information message:

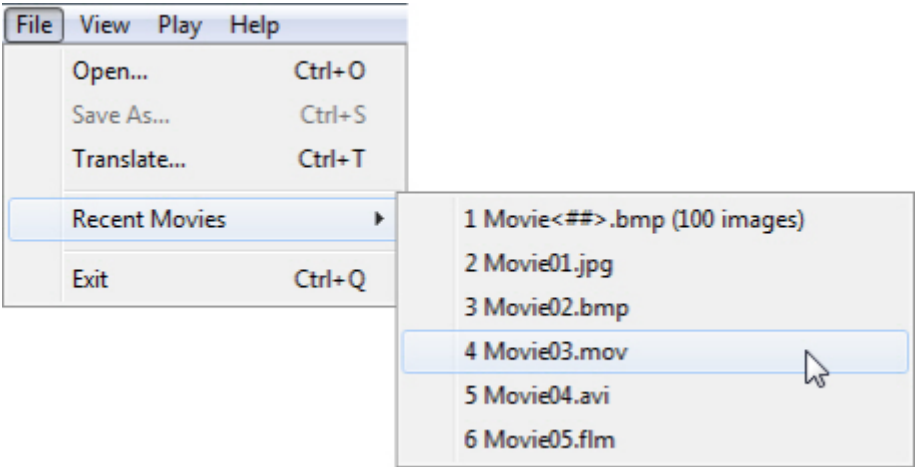


User interface improvements

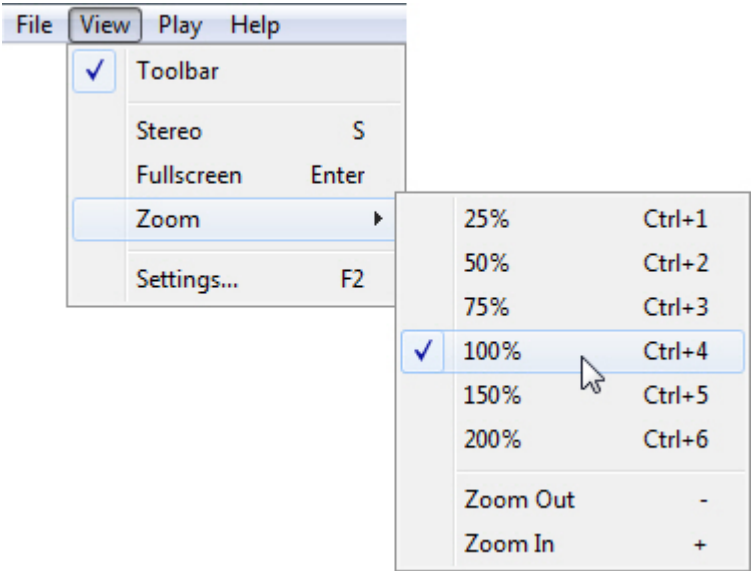
There are a number of improvements in the user interface. You can read about all of these further in this Manual.

Restructuring of the application menu

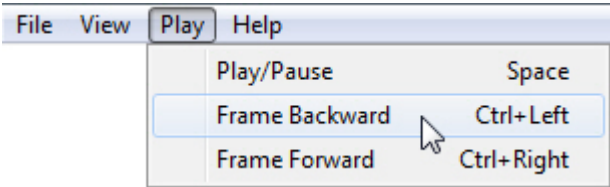
The application menu has been restructured.
The **Recent Movies** list has been added to the **File** menu for faster access to previously viewed files. There are using masking for naming the series of images in the **Recent Movies** list: The_Common_Part_of_the_File_Names<###>.File_Type (the number of images in the set). The '#' characters are necessary for determination of the counter in the file names: the number of the characters in the mask is equal to the number of digits in the counter.



The **View** menu has been modified. The **Stereo**, **Fullscreen** and **Settings...** items have been added to it. The **Scaling** menu has been renamed to **Zoom**, and also it has been extended.

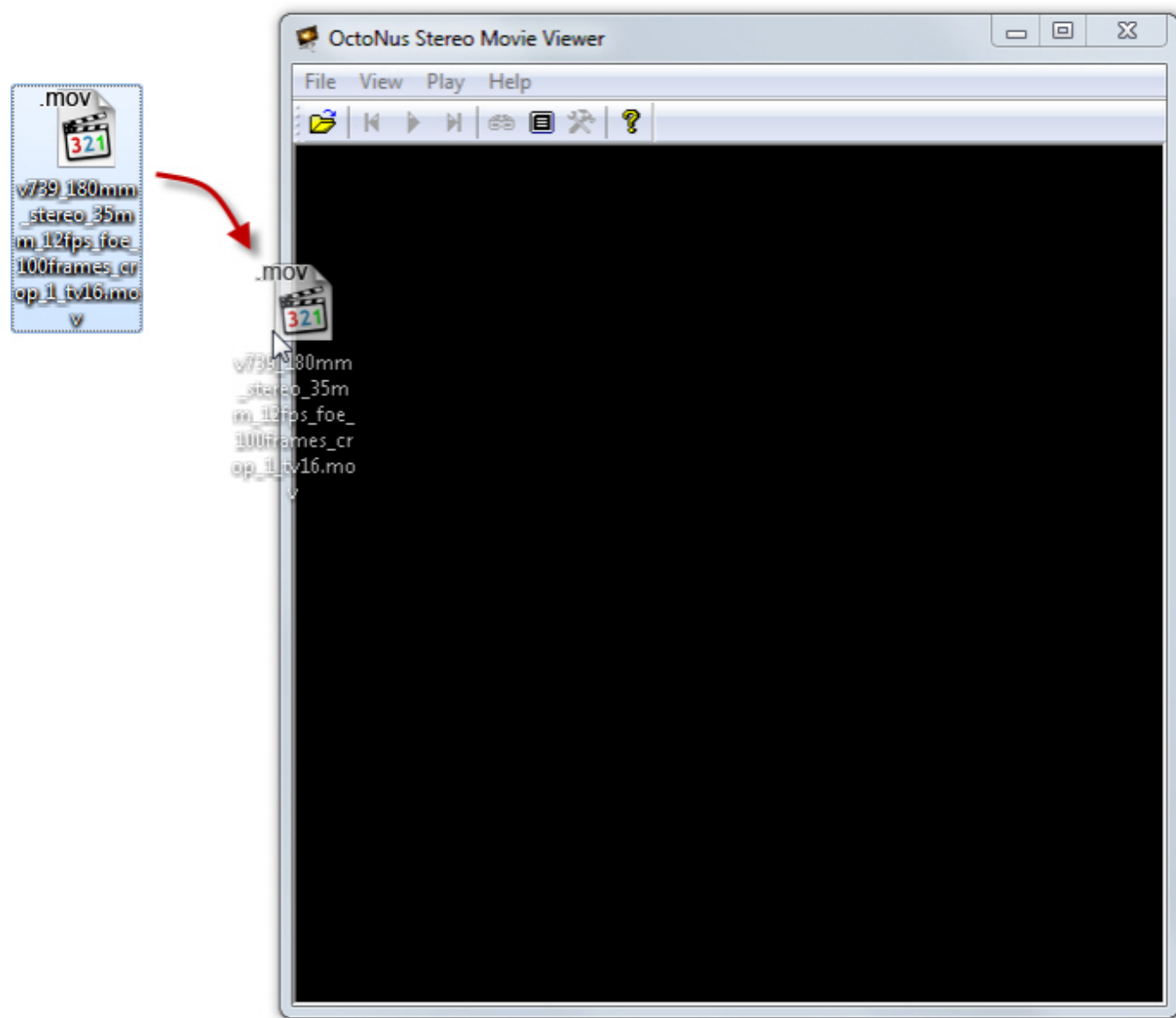


Furthermore, the **Play** menu has been added.



Opening files by drag & drop

Now you can open the movie to play simply by drag & drop.



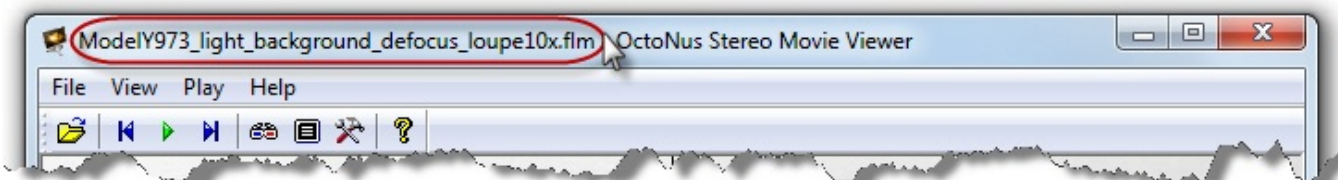
Supported file registration has been added to the system

All the supported data types will be registered during application installation (**MOV, AVI, FLM, BMP, JPG**). After that, **FLM** movies can be opened by double clicking a file icon. Files of the other types can be opened using the **Open with** menu.

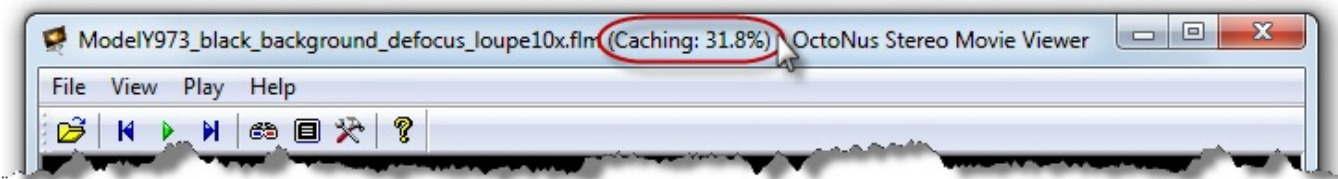


File name and caching information have been added to the window title

Now you can see the name of the played file in the window title. There are also using masking for naming the series of images in the title.

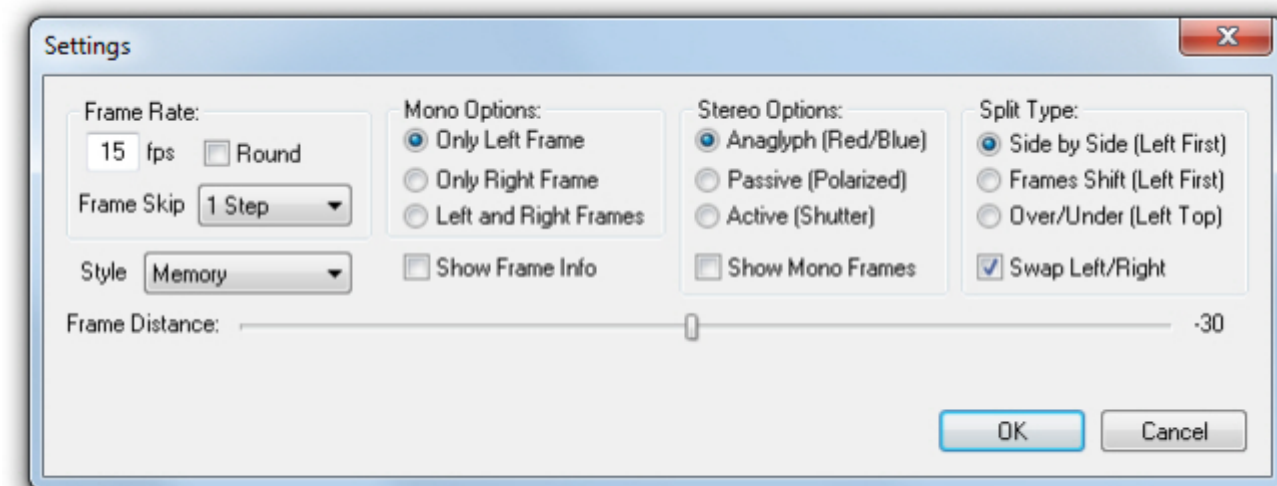


If you use **Style Memory** in the **Settings** dialog, you can also see the information about the progress of file loading into the memory.



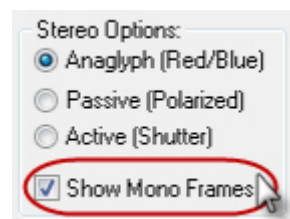
Settings dialog modification

In this version of the OctoNus Stereo Movie Viewer, the **Settings** dialog has been changed.



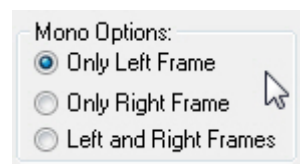
New option of stereo mode playing

Now you can view the left-eye and right-eye frames at the same time and watch the stereo image in the same format. For this purpose, it is necessary to check **Show Mono Frames** in the **Settings** dialog.



Three new options of mono mode playing

Now you can choose which frame will be displayed in the mono mode (only left frame/only right frame/left and right frames). For this purpose, it is necessary to check the corresponding radio button in the **Settings** dialog.



Caption information has been added to the played frame

Now you can show/hide the information caption for the played frame (left frame/right frame/stereo frame). For this purpose, it is necessary to check/uncheck **Show Frame Info** in the **Settings** dialog or to push the "F" hotkey.



3.4. New shortcuts

Ctrl+O	Open new movie
Ctrl+S	Save movie as
Ctrl+T	Show Translate dialog (Ctrl+Alt+T in the next versions)
Ctrl+Q	Quit the application
Ctrl+1	Zoom level of 25%
Ctrl+2	Zoom level of 50%
Ctrl+3	Zoom level of 75%
Ctrl+4	Zoom level of 100%
Ctrl+5	Zoom of the frame 150%
Ctrl+6	Zoom of the frame 200%
+ / = / Num+	Zoom out
<ul style="list-style-type: none">• / Num-	Zoom in
F2	Show Settings dialog
Ctrl+Left	One frame backward
Ctrl+Right	One frame forward
F	Show/hide frame information

Fixed bugs

In this version, bugs with opening incorrect data have been fixed. Now checking the input data is more reliable.