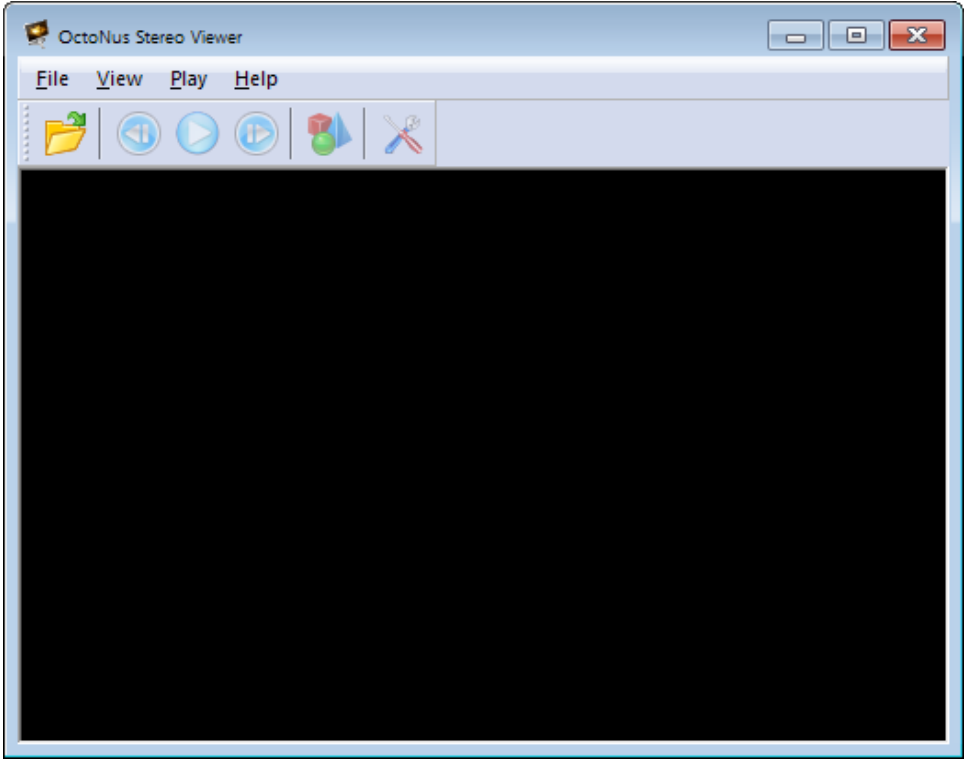

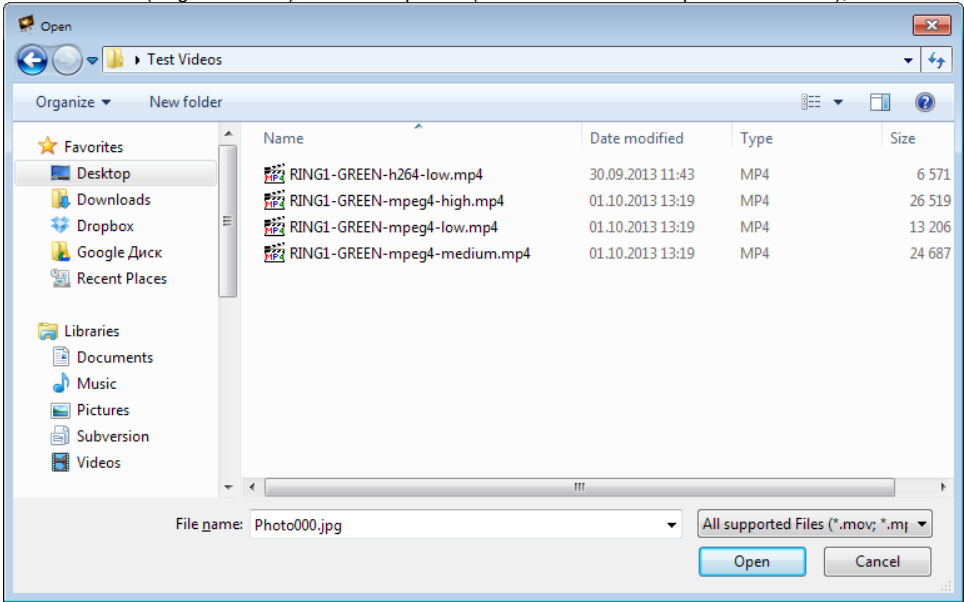


Quick Guide

- [Download](#) and install the **StereoMovieViewer.exe** file;
- Start the software:

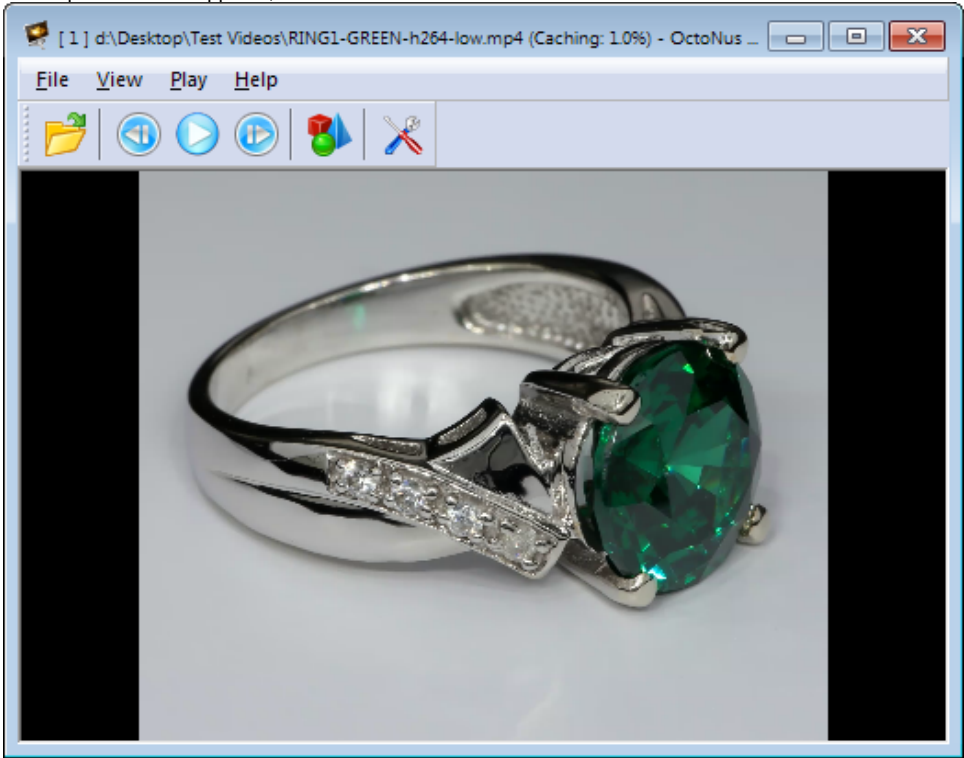





- Press the **Open** button  to open an movie or a series of photos;
- Select a movie (single selection) or series of photos (folder selection or multiple files selection);

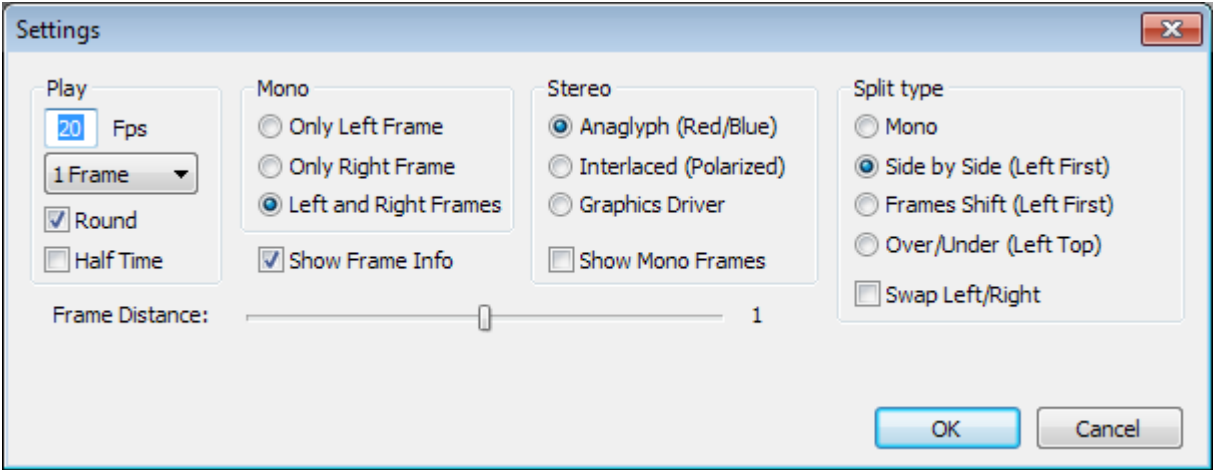


- Press the **Open** button;
- Select the movie type in the dialog (it only appears if the movie type cannot be selected automatically)

- The requested movie appears, as a result:



- Press the **Play** button  to start the movie;
- To switch on/off the stereo mode, press button  ;
- To activate the fullscreen mode, press **Enter** or **double-click** anywhere in the window ;
- To exit the fullscreen mode press **Enter** or **Esc**;
- To adjust settings, stop playing the movie and press button  ;
- The **Settings** dialog box will appear:



- Set the **Frames Rate** (fps);
- Check the **Round** checkbox to loop the movie;
- Select the **Stereo Mode**:
 - **Anaglyph** (Red/Blue) - for red-blue stereo glasses;
 - **Interlaced** (Polarized) - for interlaced polarized stereo glasses;
 - **Graphics Driver** - for **NVIDIA 3D Vision** stereo glasses or Smart TV.
- Select the **Split Type**:
 - **Side by Side** (Left first)



With this split type, the initial frame is split by a vertical line into two images intended for the left and the right eye, respectively. This is a widespread content type.

- **Frame Shift** (Left first)



With this split type, the images for the left and the right eye produce a stream of somewhat shifted frames. This split type is suitable for movies with rotating objects.

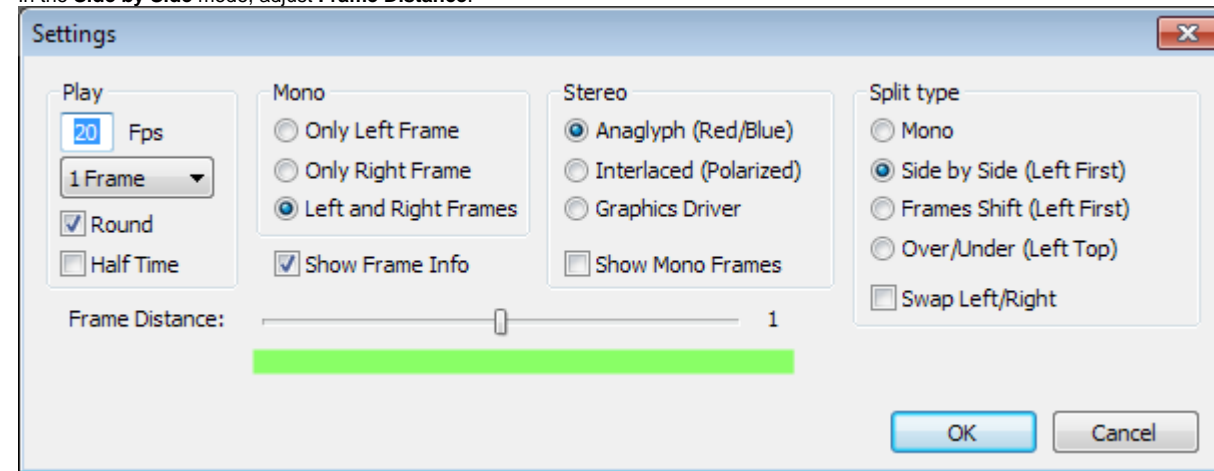
- **Over / Under** (Left top)



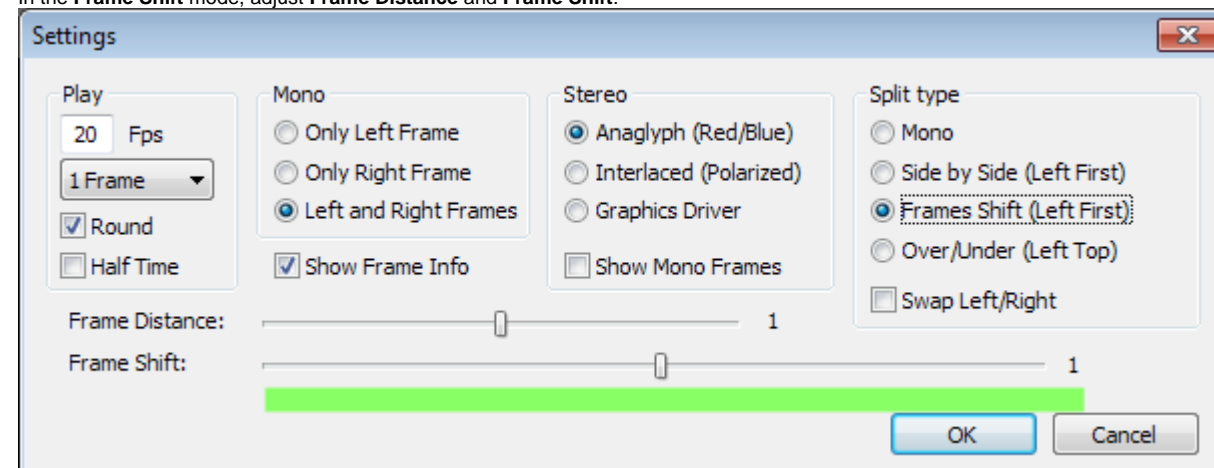
With this split type, the initial frame is split by a horizontal line into two images intended for the left and the right eye, respectively. This is a rare content type.

For comfort stereo viewing:

In the **Side by Side** mode, adjust **Frame Distance**.



In the **Frame Shift** mode, adjust **Frame Distance** and **Frame Shift**:



Note. To change the parameter values, use the mouse or the left and the right arrow keys of the keyboard.