

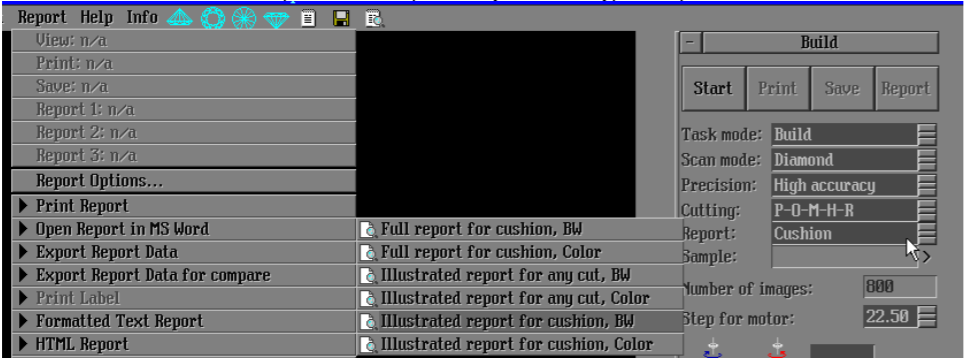
2014.06.06 - Helium Polish version 5.6.44.1/report.dll version 2.4.19.1

Release contains:

File	Version
HeliimPolish.exe	5.6.44.1
report.dll	2.4.19.1

In this version we have fixed following bugs:

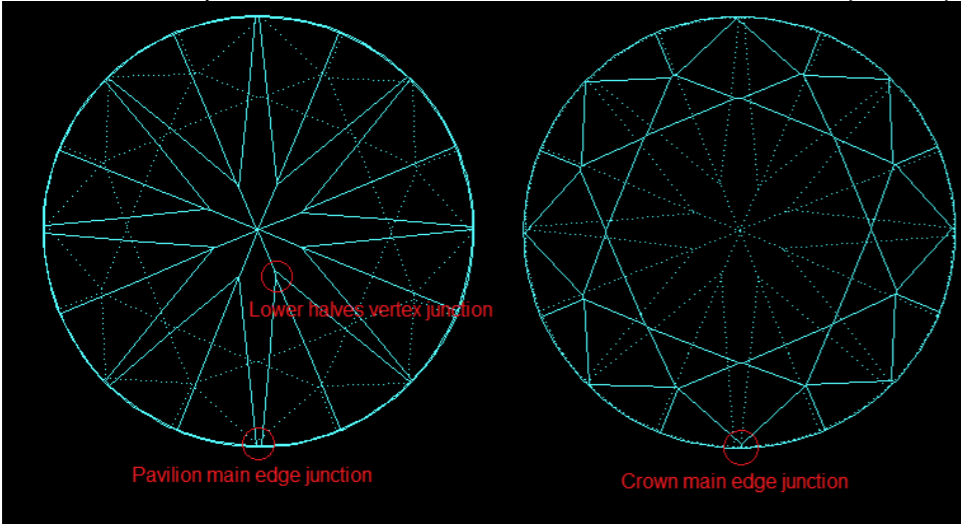
1. Intentional choice of Cushion report in filed Report. Early “cushion” type of report was absent.



2. Some stability fixes for algorithm of holder plane checking.
 - a. button Start will not be blocked if operator close panel by left upper cross. There is no need to restart program.
 - b. if operator doesn't remove stone when program asks to do it then program will block scanning. When operator removes stone programs unblock scanning with next checking.
 - c. during “computer power safe” mode checking of holder will not run.
 - d. program shows corresponding message box if file HolderContours.mmd is absent or contains not correct contours.

This version has following new feature:

1. Measurements of facet junctions for RBC and for rounded fancies. New bookmarks are in Full reports. Templates of reports are attached.



Parameter		1	2	3	4	5	6	7	8
Crown main edge junction	%	-0.96	-0.48	-0.39	-0.27	-0.40	-0.50	-0.68	-0.88
Crown main edge junction	mm	-0.049	-0.024	-0.020	-0.014	-0.020	-0.025	-0.034	-0.045
Pavilion main edge junction	%	1.25	0.68	0.44	0.84	1.03	0.98	1.72	1.44
Pavilion main edge junction	mm	0.063	0.034	0.022	0.042	0.052	0.049	0.087	0.073
Lower halves vertex junction	%	2.05	0.03	1.32	0.78	1.39	1.83	0.82	0.46
Lower halves vertex junction	mm	0.104	0.002	0.067	0.040	0.071	0.093	0.041	0.023

2. Bookmarks:
PAV_MAIN_EDGE_JUNCTION_...
CRN_MAIN_EDGE_JUNCTION_...
LOWER_HALVES_VERTEX_JUNCTION_...

Please find set of templates where Full_report_for_brilliant.rtf and Full_report_for_rounded_fancies.rtf are changed – new parameters are added.