

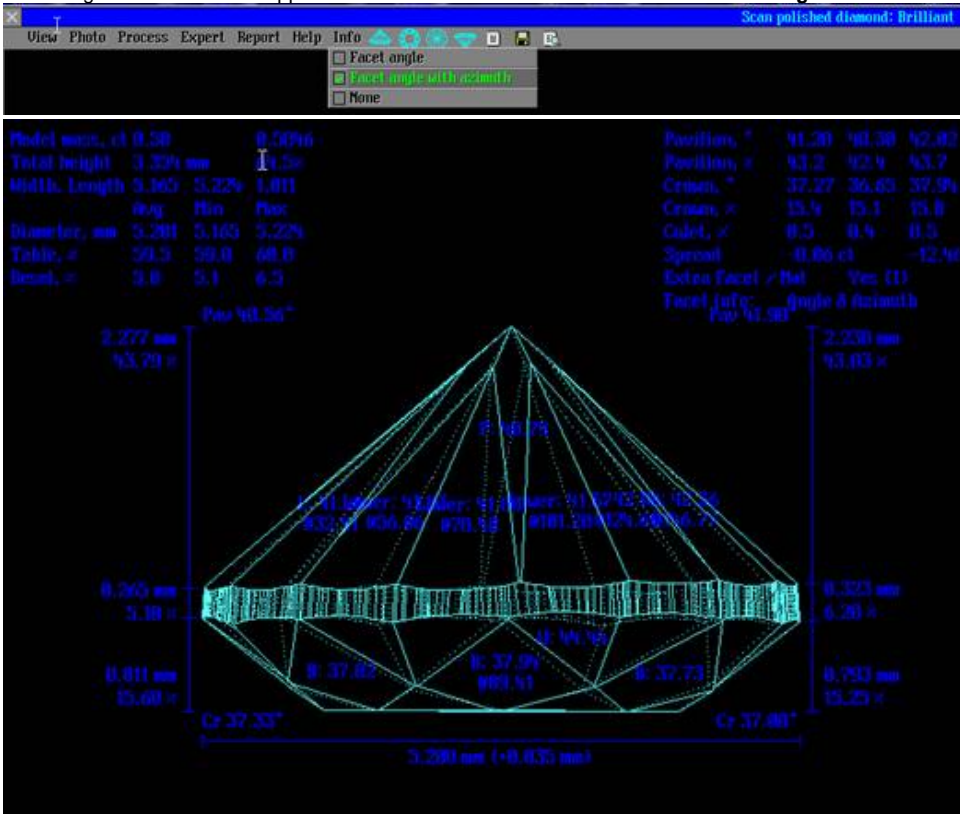
# 2016.06.20 - Helium Polish version 5.6.87.1, report.dll version 2.9.1.1, BrilRecon.dll version 1.1.15.1, report templates dd 20.04.2016

Release contains:

File	Version
HeliumPolish.exe	5.6.87.1
report.dll	2.9.1.1
BrilRecon.dll	1.1.15.1
Reports templates	2016-04-20

In this version we made the following changes:

1. **Fixed** bug with occasional disappearance of information from menu item **Info -> Facet angle with azimuth** of **Scan polished diamond** panel.



2. **Fixed** bug with calculation of Junction Bone Twist and Junction Bezel Twist parameters.

x7684.asc

Junction Bezel Twist	°	2.19	0.94	0.78	-1.22	0.38	-0.15	1.05	-0.04
Junction Bezel Twist	mm	0.097	0.041	0.035	-0.054	0.017	-0.007	0.046	-0.002
Junction Bone Twist	°	0.23	0.13	-0.10	-0.43	-0.33	-0.78	-0.02	-0.07
Junction Bone Twist	mm	0.010	0.006	-0.004	-0.019	-0.015	-0.035	-0.001	-0.003

3. Star Edge Symm parameter is **added** (corresponding to HPO SR parameter). Star Edge parameter (introduced before) is different from that in SR HPO.

Star Edge Symm is calculated as maximal absolute value among differences between lengths of *each pair of edges* forming star facets.  
Star Edge is calculated as maximal absolute value among differences between *all lengths of edges* forming all star facets.

Parameter		Avg
Star Edge <u>Symm</u>	%	2.10