

# 2016.10.04 - PC 6.0.153

Here you can find information about what is new in Pacor Client 6.0.153.

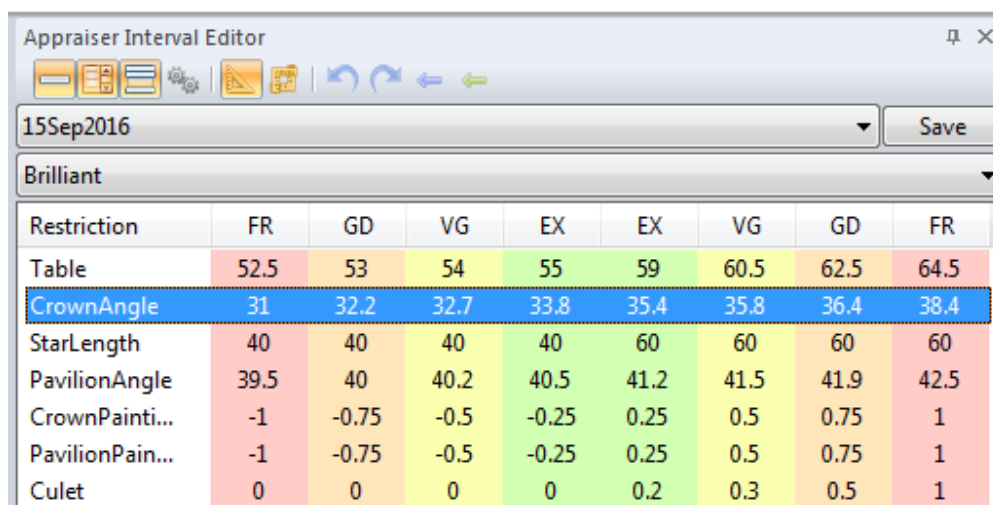
## On this page:

- 1 [GUI updates](#)
  - 1.1 [Intervals editing](#)
  - 1.2 [Quick selection of appraiser from the list](#)
  - 1.3 [Highlighting of cutting types available for optimization](#)
  - 1.4 [Reading/writing of DMCX files](#)
  - 1.5 [Quick report panel](#)
  - 1.6 [Window size](#)
- 2 [Optimization](#)
  - 2.1 [15Sep2016 appraiser and its profiles](#)
  - 2.2 [Limitation on the number of optimization forms](#)
  - 2.3 [Increased number of optimization parameters](#)
  - 2.4 [Emerald\\_3x3 and Emerald\\_3x4 cutting types](#)

## GUI updates

### Intervals editing

[Editing](#) of intervals is now available for all cutting types. **Appraiser Interval Editor** panel now contains a cutting type selector.

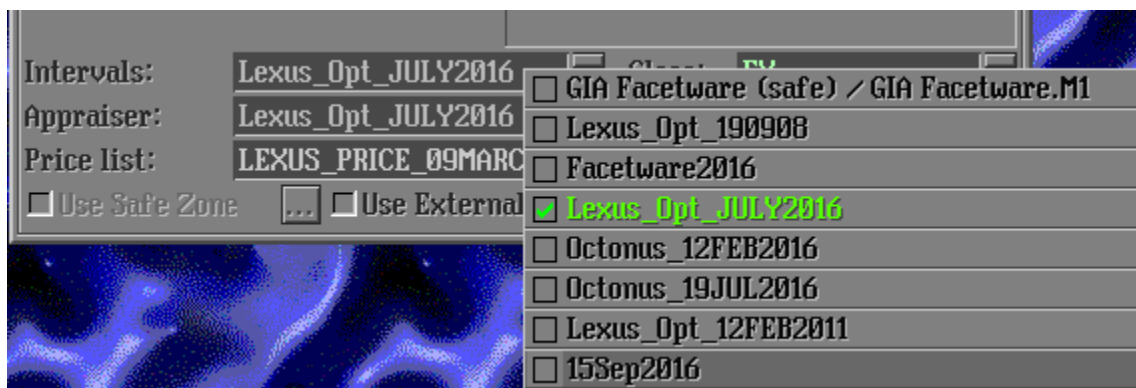


Restriction	FR	GD	VG	EX	EX	VG	GD	FR
Table	52.5	53	54	55	59	60.5	62.5	64.5
CrownAngle	31	32.2	32.7	33.8	35.4	35.8	36.4	38.4
StarLength	40	40	40	40	60	60	60	60
PavilionAngle	39.5	40	40.2	40.5	41.2	41.5	41.9	42.5
CrownPainti...	-1	-0.75	-0.5	-0.25	0.25	0.5	0.75	1
PavilionPain...	-1	-0.75	-0.5	-0.25	0.25	0.5	0.75	1
Culet	0	0	0	0	0.2	0.3	0.5	1

If a cutting type is graded based on intervals alone, then the starting form and the optimization forms can be recalculated automatically.

### Quick selection of appraiser from the list

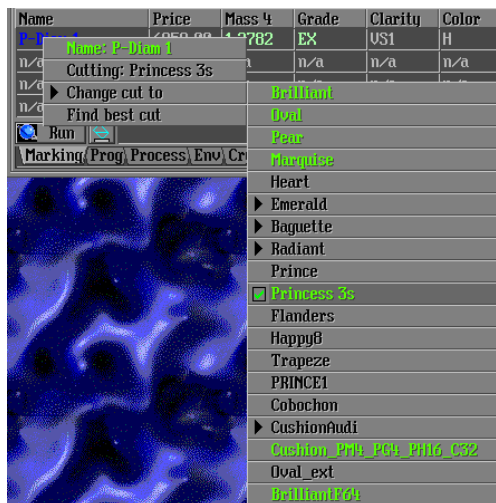
By right-clicking in the **Intervals** or **Appraiser** field in the **Rough Classification** panel you may reveal a list of all appraisers and quickly select the desired one.



Currently active appraiser is highlighted in green.

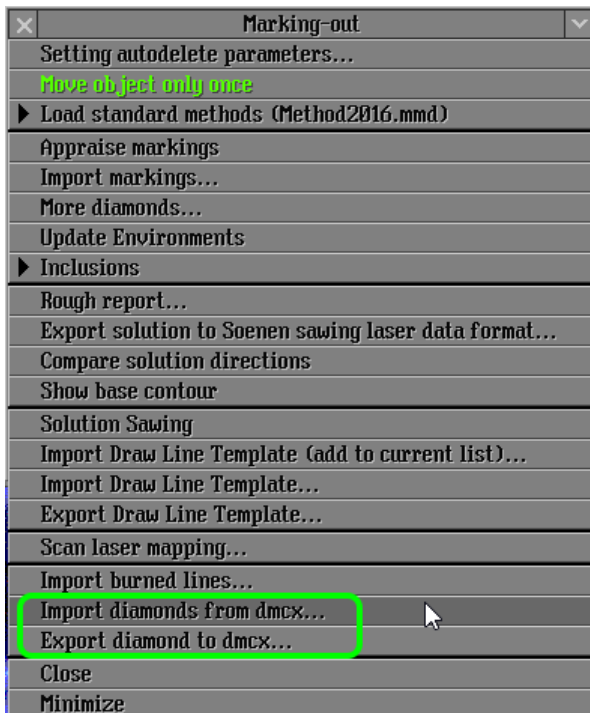
## Highlighting of cutting types available for optimization

When a list of available cutting types is displayed in the by clicking **Change cut to** on the **Marking-out** panel, the cutting types which can be graded in the currently selected appraiser and which are thus available for optimization are highlighted in green.



## Reading/writing of DMCX files

The main menu of the Marking-out panel now contains commands for exporting or importing \*.DMCX files.



This is intended for manual creation and manipulation of the optimization forms.

Both \*.DMCX and \*.DMC files can be imported. All diamonds in the file get included in the Marking-out list as separate solutions, each containing one diamond. If a form comes with a text description, the latter is displayed in the terminal upon opening the file. Presently the automatically generated forms have descriptions.

When exporting into a \*.DMCX file, all selected solutions from the Marking-out list get written to the file, in the same order as they are on the panel. When exporting a \*.DMC file, only the first diamond is saved.

Alternatively, importing forms from a \*.DMCX file can be made by dragging the file and dropping it over the Pacor Client application window.

## Quick report panel

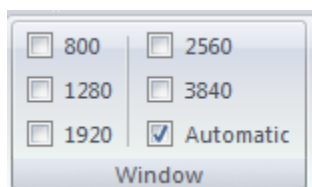
A report is available for any cut in the appraiser. The report contains all information available in the appraiser. Currently the option is limited to BrilliantF64 cutting type in the appraiser 15Sep2016.

Report <BrilliantF64> for 15Sep2016						
Estimated Weight (ct)	0.8087	Target Quality		EX		
		Cut			Symmetry	
Parameters	Value	GIA	My	Dev	GIA	My
Diameter (mm)	6.011			0.62	EX	EX
Table Size (x)	61.54		EX	0.31	EX	EX
Crown Angle (°)	34.93		EX	0.13	EX	EX
Pavilion Angle (°)	40.93		EX	0.14	EX	EX
Star Length (x)	54.50		EX	0.03	EX	EX
Lower Half (x)	80.52		60.00 95.00	0.00	4.00	2.00
Girdle Bezel Thickness (x)	3.56		EX	0.00	EX	EX
Grade per 6 parameters		EX				
Star Angle (°)	20.71			0.05	EX	EX
Upper Angle (°)	43.09			0.13	EX	EX
Lower Angle (°)	42.01			0.13	EX	EX
Girdle Valley Minimum (x)	1.77	EX	EX			
Girdle Valley Maximum (x)	1.80	EX	EX			
Culet Size (x)	0.00	EX	EX			
Crown Height (x)	13.48		EX	0.00	EX	EX
Pavilion Depth (x)	43.46			0.00	EX	EX
Final grade	EX	EX			EX	

The report panel contains both parts of the appraiser, namely Facetware and My.

## Window size

The list of predefined window sizes is extended with the options 25601440 and 38402160, so that the program could be used on high resolution monitors.



The program would automatically enlarge its own window if the inner windows would not fit into it.

## Optimization

### 15Sep2016 appraiser and its profiles

A new appraiser **15Sep2016** is based on **Facetware2016** (cutting type BrilliantF64) and **Lexus\_Opt\_JULY2016** (all other cutting types, excluding Cushion, Cushion.P32C32, Cushion.P28C32A, Cushion\_PM4\_PG8\_PH16\_C32\_Flat\_2M\_07\_Aug\_2009, Cushion3, MoonOval\_wBT, MoonMarquise\_wBT, Pear32, Pear64, Radiant\_Hdipak, Triangle, and Prism). Forms are recalculated automatically for all cutting types except BrilliantF64, Cushion\_PM4\_PG8\_PH16\_Pbrill\_C32, Cushion\_PM4\_PG8\_PH24\_Pbrill\_C32, and Parallelepiped.

The appraiser comes with two profiles called Default and My. The latter is editable, the former is not.

The intervals for all cutting types except BrilliantF64 are identical in both profiles and correspond to those used in **Lexus\_Opt\_JULY2016**. Optimization forms were built automatically. Emerald cuts contain 11 forms. The rest of cuts contain up to 10 forms. With BrilliantF64, intervals used by the first profile correspond to **GIA Facetware Default**, and those of the second profile are from **MyGIA+GIA Facetware**. EX group of the Default profile contains 7 forms.

### Limitation on the number of optimization forms

The program has a limitation on the number of optimization forms used by the algorithms. For **13. Single-M** the limit is 1000. The **13. Cascade-2M** algorithm uses just the first 4 forms.

### Increased number of optimization parameters

The number of optimization parameters is increased from 16 to 32. To use them, define OP\_7 ... OP\_22 in the Optimize line of the appraiser. This option was employed to build the appraiser for the cuts Emerald\_3x3 and Emerald\_3x4.

### Emerald\_3x3 and Emerald\_3x4 cutting types

CuttingLibrary.dll v. 1.0.7 now includes the following new cutting types:

- Emerald\_3x3 (three steps in the crown and three steps in the pavilion, corresponds to the inner Emerald).
- Emerald\_3x4 (three steps in the crown and four steps in the pavilion, corresponds to the outer Emerald.P32C24).

Additionally, each cut contains culet size, culet offset, and table offset. Crown and pavilion are parametrized in the identical way, and depends only on the number of steps.

- Three-step structure: three angles, two height ratios, and table (or culet).
- Four-step structure: four angles, three height ratios, and table (or culet).

The principal difference from the cuts used earlier is that optimization may use any of the four independent sets of step height definitions, as follows:

1. T, H2/H, H3/H. (H2 and H3 are step heights, H is crown height). Step height is specified relative to the crown height.
2. T, H2/H1, H3/H2. Step height is specified relative to the height of the previous step.
3. T, W2/W1, W3/W2 (W1, W2, W3 are step widths). Step is parametrized by width which is specified relative to that of the previous step.
4. T, H1/D, H2/H1 (D is the stone diameter). Height of the first step is specified relative to diameter, and height of the second step is specified relative to that of the first step.

Pavilion is defined in a similar way, using culet size in place of table (T).