

2017-04-24 - HPOxygen Server 3.22.14

- [Scanning](#)
 - [Speed up](#)
 - [Edge adjustment](#)
- [Interface](#)
- [Reports](#)
- [Recut](#)
- [Bugfixes](#)

Scanning

Speed up

Scanning is speeded up. This is especially noticeable at scan modes that require many additional contours. Below are the averaged scan times for two stones. The measurements were made on HP 17D with HP-1 board. Acceleration line in `HP0Drivers.ini` was turned off.

Round brilliant

Contours	HPP 5.6.91	HPO 3.22.1	HPO 3.22.12
50	6.6	9.7	7.0
Quick / 100	8.0	9.4	8.5
Optimum / 200	14.5	15.8	14.5
Accuracy / 400	23.9	25.5	25.7
High Accuracy / 800	46.7	48.7	47.8

Princess



Contours	HPP 5.6.91	HPO 3.22.1	HPO 3.22.12
50	14.7	27.7	15.8
Quick / 100	10.4	14.2	11.0
Optimum / 200	21.5	24.4	18.5
Accuracy / 400	31.2	33.5	28.8
High Accuracy / 800	52.4	55.0	51.1

Edge adjustment

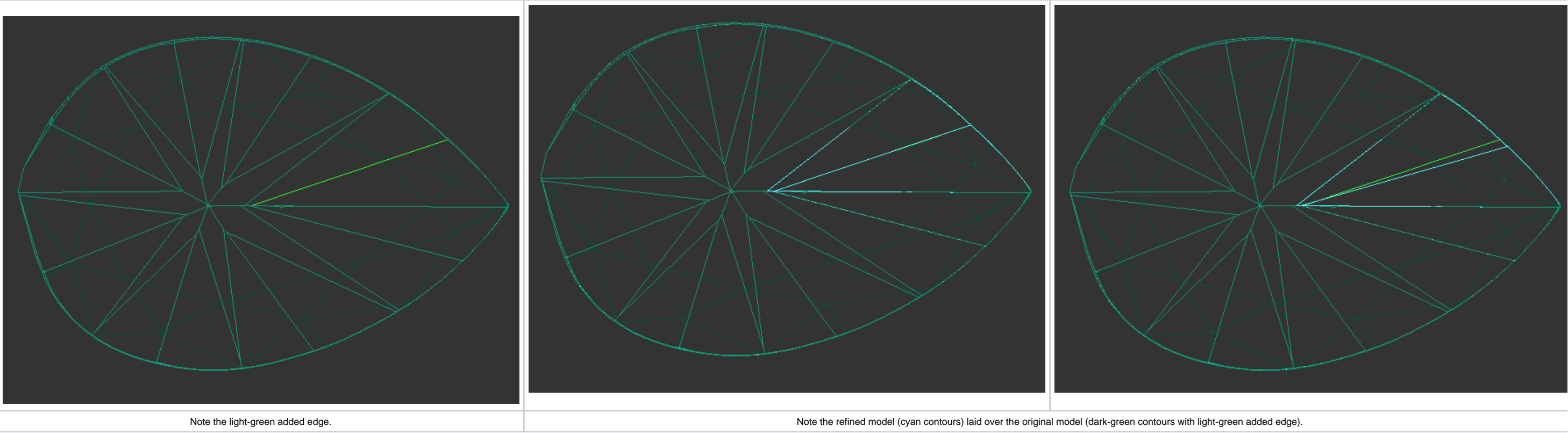
Two modes of edge addition during manual adjustment of the model are now working as expected.



The users are advised to choose one of the modes depending on their confidence in the position of the missing edge. The program, in turn, uses the degree of reliability to determine the extent to which the added edge can be altered during the refinement:

- **Add edges with high precision**  produces an edge located as close as possible to the user's input;
- **Add edges with low precision**  treats the user's input as a vague hint, so the resulting refined edge may appear some distance away.

Before refinement	After refinement (high precision)	After refinement (low precision)
		



Model used: [Add_edge_hard_soft.oxgz](#) .

 Note that in both cases the refinement still can affect multiple other edges, not necessarily limited to the affected facet.

Interface

1. Appraiser title is made visible in a tooltip upon hovering the mouse cursor over the list of solutions.

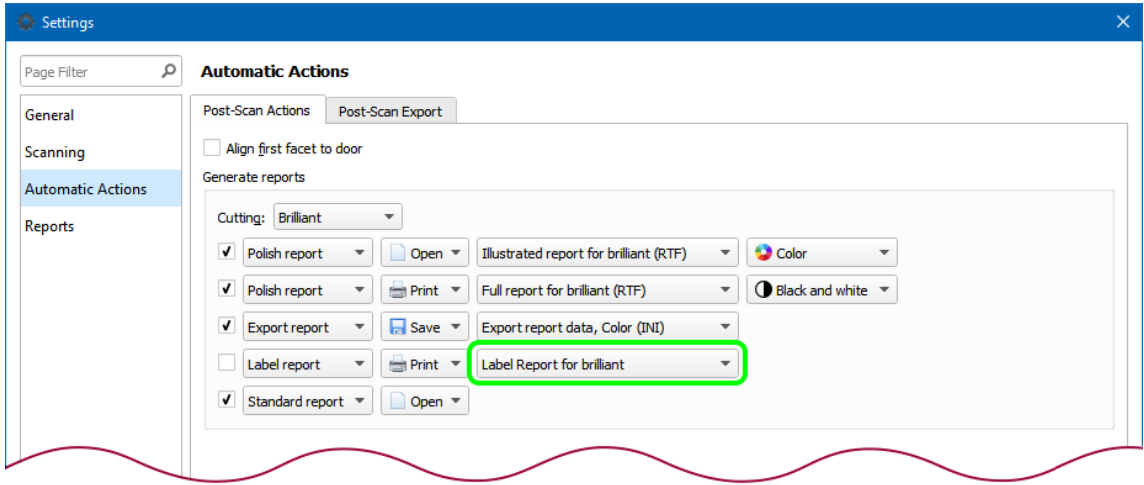
<input checked="" type="checkbox"/>	Shadow scan	3.8510										
<input type="checkbox"/>	11		●	42048\$	Brilliant	2.9249	75.82%	VS1	H	EX	EX	EX
<input type="checkbox"/>	9		●	41472\$	Brilliant	2.8810	74.79%	VS1	H	EX	EX	EX
<input type="checkbox"/>	10		●	41328\$	Brilliant	2.8761	74.53%	VS1	H	EX	EX	EX
<input type="checkbox"/>	4		●	41184\$	Brilliant	2.8679	74.27%	VS1	H	EX	EX	EX
<input type="checkbox"/>	6		●	41184\$	Brilliant	2.8658	74.27%	VS1	H	EX	EX	EX
<input type="checkbox"/>	5		●	41184\$	Brilliant	2.8637	74.27%	VS1	H	EX	EX	EX
<input type="checkbox"/>	7		●	41184\$	Brilliant	2.8594	74.27%	VS1	H	EX	EX	EX
<input checked="" type="checkbox"/>	8		●	40752\$	Brilliant	2.8382	73.49%	VS1	H	EX	EX	EX
<input type="checkbox"/>	3		●	40176\$	Brilliant	2.7918	72.45%	VS1	H	EX	EX	EX

Previously there was no way to know the appraiser when opening an old file with recut solutions.

2. Shortcuts configuration window would not allow to assign a shortcut which is already assigned to another command.

Reports

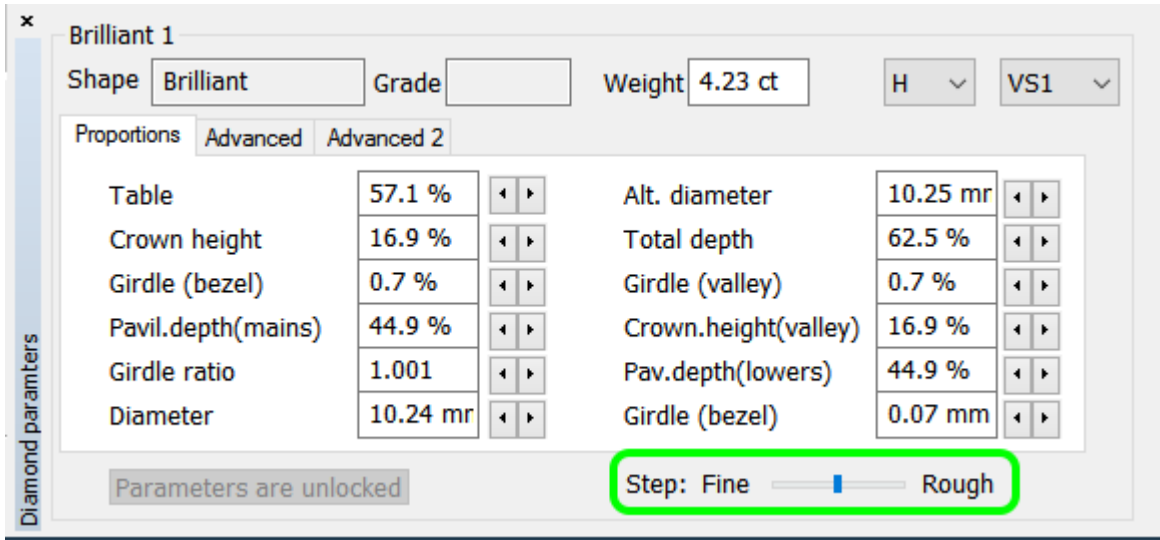
Settings for automatic actions now include the selection of label report template.



Previously the option of using custom label report templates was limited to manual generation of the label report via the right panel, and did not extend to automatic actions.


Recut

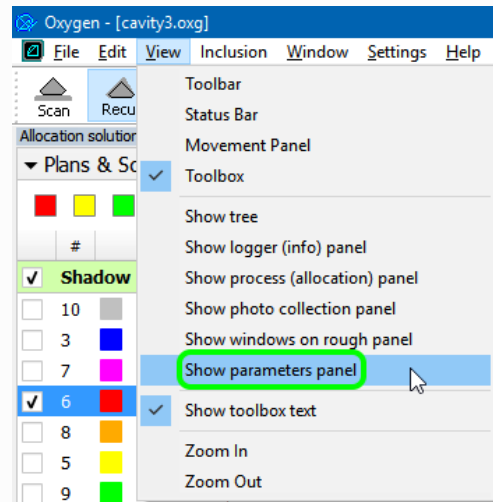
Step size control is added to the Parameters panel (unlocked mode).




The control has five positions corresponding to the following step sizes:

Position	Step size			
	Angles	mm	%	Ratio
1 (fine)	0.1	0.01	0.1	0.001
2	0.5	0.05	0.5	0.005
3	2	0.2	2	0.02
4	5	0.5	5	0.05
5 (rough)	10	1	10	0.1

 To view the parameter panel, run Recut, select any solution, and click **View Show parameters panel**.



 Unlocking the Parameters panel is not recommended. Once the parameters have been changed manually, it is no longer guaranteed that the solution fits inside the existing stone.

Bugfixes

1. Memory leaking issue is fixed.
2. Bug that led to doubling of Reflect contours during recalculation is fixed.
3. Incorrect model rendering over photos and contours (shift and scaling) is fixed.
4. Highlighting of facets for selection of minimum and maximum Crown height and Pavilion height in the Standard Report is temporarily switched off.
5. Bug that occasionally caused recut solutions of the Semicut (final) algorithm to turn upside down is fixed.

