

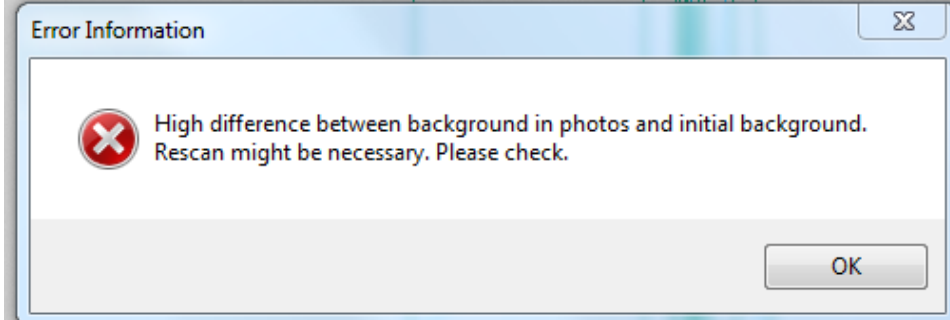
# HIG 2901 (December 2018 release) Documentation

## What's new?

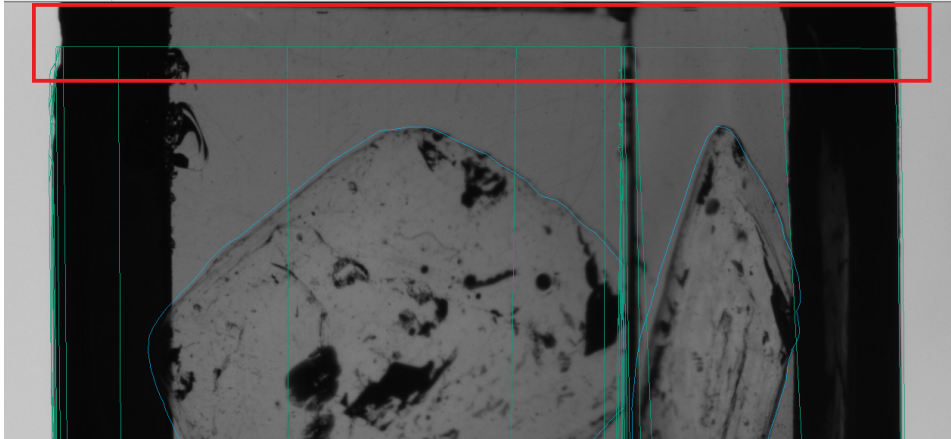
Here is the documentation for hotfixes in Oxygen HIG v2901: [Download\HIG\InstallOxygenHIG.3.26.29.2901.Beta](#)

Main bugfixes:

- Fixed the problem with false error with high difference in background:



This error took place when the top of the cube model did not correspond the top of the cube on the photo:



- Fixed the crash during glue building stage for case when the rough model is outside the cube model:

