

# Interface

HP Oxygen has an intuitive interface with a lot of features helping users to solve everyday tasks.

On this page:

1

HPOxygen Window

1.1

Top Panel

1.1.1

Main Panel

1.1.2

Buttons for Stone Standard Positions

1.1.3

Toolbox

1.2

Left Panel

1.3

Additional Panels

1.4

Scene

1.5

Right panel

2

Special Modes

2.1

Lock to Scan

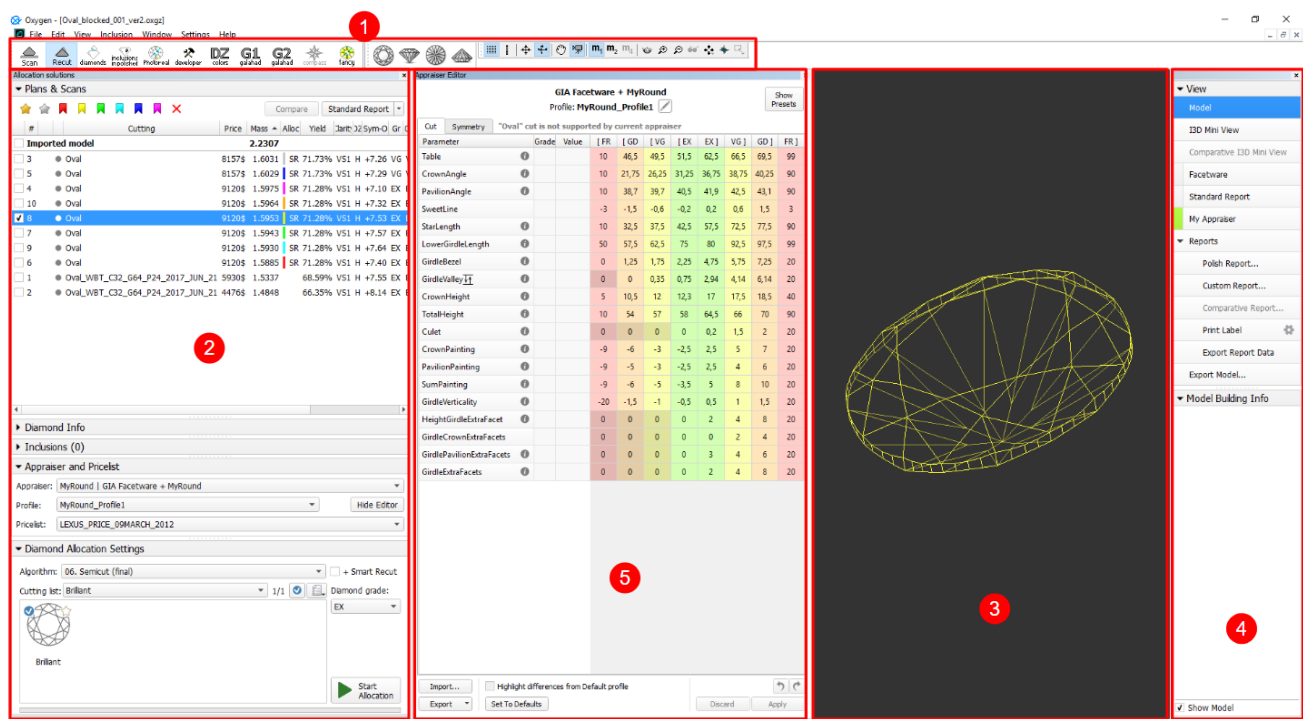
## HPOxygen Window

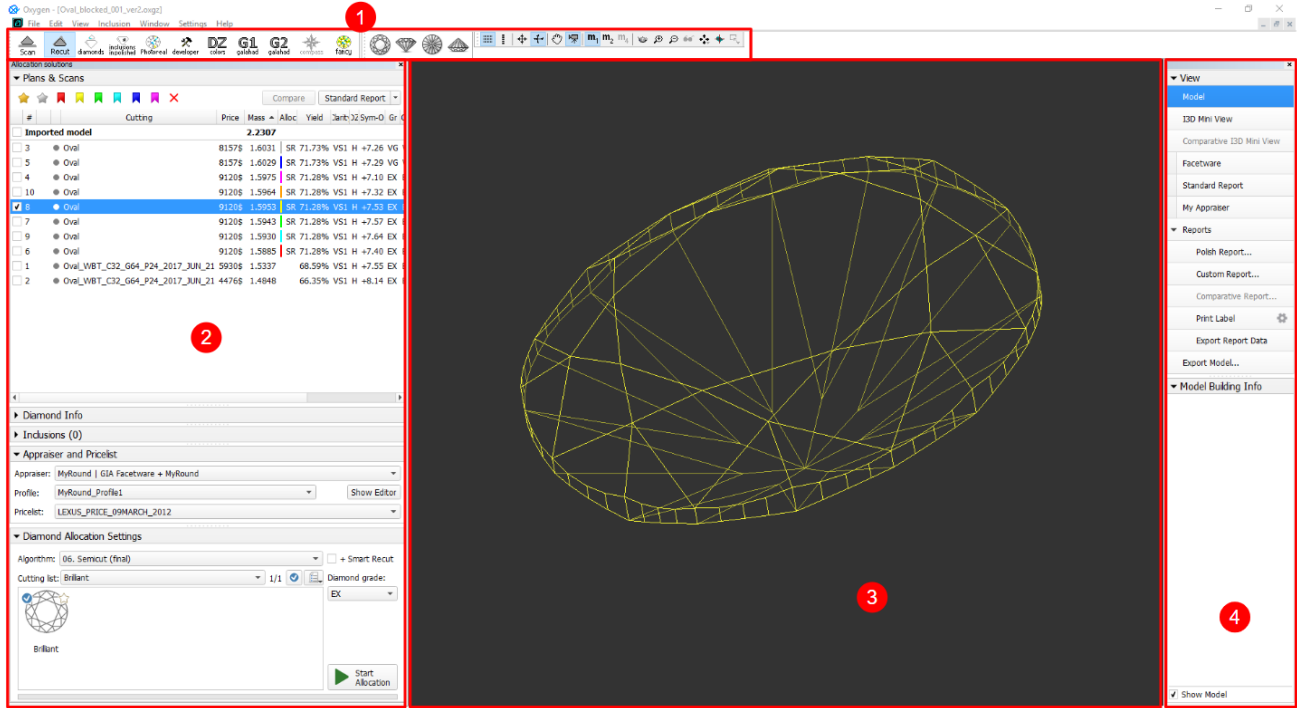
The program window is divided into the following areas:

1. Top panel
2. Left panel
3. Scene
4. Right panel
5. (Optional) Additional panels

Besides that, some features are set up in additional pop-up windows.

Below are the examples of how the main window may look with or without additional panels:





## Top Panel



The top panel includes several sub-panels:

1. Main panel
2. Buttons for stone standard positions
3. Toolbox

## Main Panel

The **Main Panel** determines the mode of operation with the following possible values:

- **Scan**. Left panel changes to **Scan & Build** (see below) which can be used to adjust the model (see [Model Adjustment](#) ) and to control the hardware if any (see [Scanning](#) ). The wireframe model is shown in the Scene.
- **Recut**. Left panel changes to contain **Plans & Scans** (see below) (see [Models management](#) ) and the features related to recut (see [Smart Recut](#) ) and appraising (see [GIA Facetware](#) ). The wireframe model is shown in the Scene.
- **Diamonds**. Left panel changes to **Plans & Scans**. The model in the Scene changes to the shaded view.
- **Inclusions**. Left panel changes to **Plans & Scans**. The Scene is split into two horizontal sub-fields to show inclusions in the polished diamond.
- **Photoreal**. Left panel changes to **Plans & Scans**. The Scene is split into two horizontal sub-fields to show the wireframe model and the photorealistic view.
- **Developer**. The whole window changes to developer mode in order to provide more low-level control of hardware, photosets, etc.
- **DZ colors**. The whole window changes to DZ mode (see [DZ color estimate](#)).
- **G1 Galahad**. Left panel changes to the mode for managing next step plans for the selected plan (see [G1 Galahad](#)).

## Buttons for Stone Standard Positions



- Top View (Crown)
- Side View (Table Up)
- Bottom View (Pavilion)
- Side View (Table Down)

## Toolbox

The buttons of the toolbox allow managing stone view in the Scene.

## Left Panel

The left panel may operate in two modes:

- **Scan & Build** can be used to control the hardware (see [Scanning](#) ) and to adjust the model (see [Model Adjustment](#) ).
- **Plans & Scans** contains the features related to recut (see [Smart Recut](#) ) and appraising (see [GIA Facetware](#) ).

Models

	Model	Mass	m	Gr	Cut	Sym
<input checked="" type="checkbox"/>	Shadow scan	0.8559		VG	VG	EX

Scan & Build

Edit model:

✖

✚

↺

↻

Cuttings:

☒ Brilliant

☐ Princess

☐ P-O-M-H-R

☐ AnyCut

☐ StepCut

☐ Asian Star

☐ Emerald

☐ Polish Polyhedron

☐ Cushion

☐ Rough Polyhedron

Sample: 

Load Sample

Scan precision:

☐ High Accuracy: 800 contours  
1 min 2 sec

☒ Accuracy: 400 contours  
32 sec

☐ Optimum: 200 contours  
17 sec

☐ Quick: 100 contours  
10 sec

Stone ID:

Shadow scan

To Door

☒ Pump

Print

Save

Report

Plans & Scans

Allocation solutions

Plans & Scans

★

☆

🚩

🚩

🚩

🚩

🚩

✖

Compare

Standard Report

#	Cutting	Price	Mass	Alloc	Yield	Carat	Sym-O	Gr
Imported model		2.2307						
<input type="checkbox"/> 3	● Oval	8157\$	1.6031		SR 71.73%	VS1	H	+7.26 VG
<input type="checkbox"/> 5	● Oval	8157\$	1.6029		SR 71.73%	VS1	H	+7.29 VG
<input type="checkbox"/> 4	● Oval	9120\$	1.5975		SR 71.28%	VS1	H	+7.10 EX
<input type="checkbox"/> 10	● Oval	9120\$	1.5964		SR 71.28%	VS1	H	+7.32 EX
<input checked="" type="checkbox"/> 8	● Oval	9120\$	1.5953		SR 71.28%	VS1	H	+7.53 EX
<input type="checkbox"/> 7	● Oval	9120\$	1.5943		SR 71.28%	VS1	H	+7.57 EX
<input type="checkbox"/> 9	● Oval	9120\$	1.5930		SR 71.28%	VS1	H	+7.64 EX
<input type="checkbox"/> 6	● Oval	9120\$	1.5885		SR 71.28%	VS1	H	+7.40 EX
<input type="checkbox"/> 1	● Oval_WBT_C32_G64_P24_2017_JUN_21	5930\$	1.5337		68.59%	VS1	H	+7.55 EX
<input type="checkbox"/> 2	● Oval_WBT_C32_G64_P24_2017_JUN_21	4476\$	1.4848		66.35%	VS1	H	+8.14 EX

Diamond Info

Inclusions (0)

Appraiser and Pricelist

Appraiser: 
Profile: 

Hide Editor

Pricelist:

Diamond Allocation Settings

Algorithm: 

+ Smart Recut

Cutting list:  1/1 

🔍

📄

☒

Brilliant

Diamond grade:

Start Allocation

**Note**


The set of displayed columns for the scan/solution list is configurable. For details, see [Configurable Set of Columns in Solution List](#).

### Additional Panels

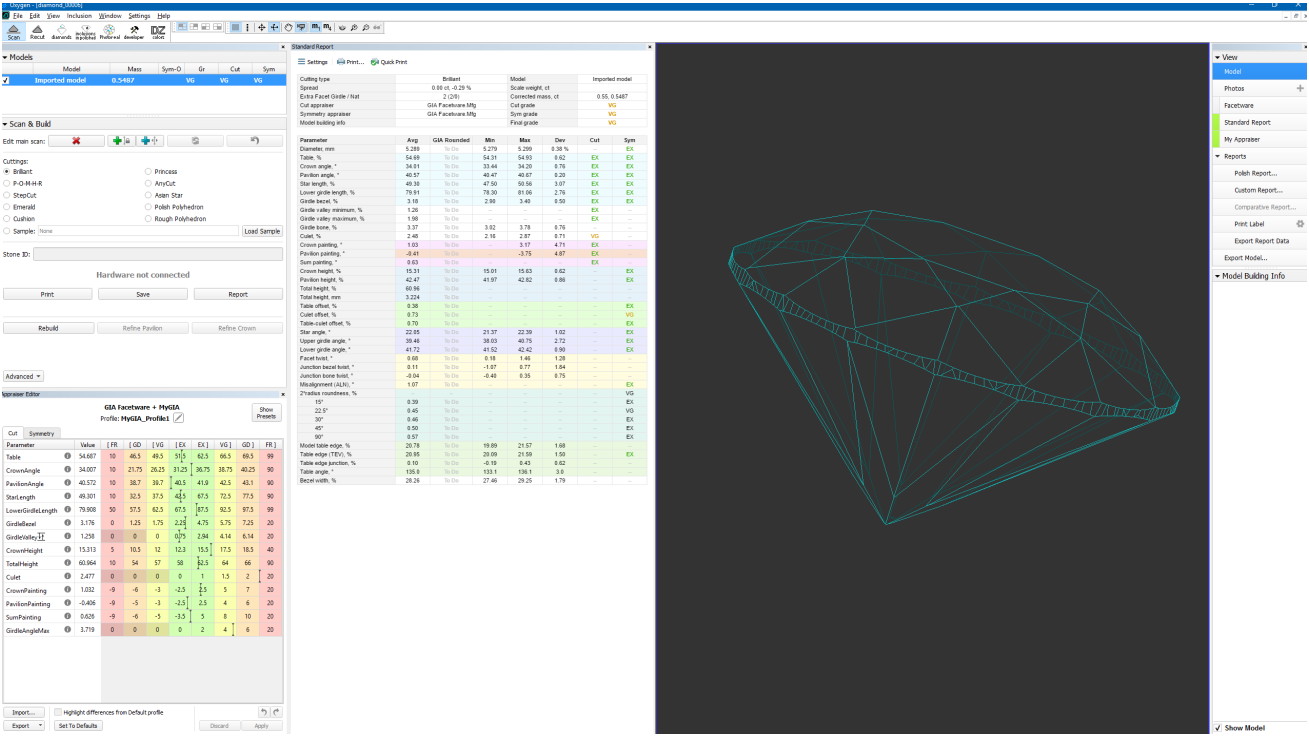
The following additional panels are available:

- [GIA Facetware](#)
- [Standard report](#)
- [My Appraiser](#)

For more detailed description refer to the corresponding particular examples.

 Note that it impossible to display more than two additional panels at once. If two of them are already displayed and the third is turned on, it will show up, but one of the other two will disappear.


Additional panels may be repositioned by dragging their top bar. In particular, they may be stacked atop each other. The limitation of two simultaneously shown panels still applies in this case.



## Scene



The Scene can work in the following view modes: **Model**, **Photos**, and **Scanner**. To switch between the modes, use the buttons on the right panel (see below).

- **Model** view mode displays the model(s), if any (see [Models management: Selecting models](#) ). The model can be rotated in 3D by mouse dragging. If there is no model, the field is displayed empty.
- **Photos** view mode displays a photo from the current photoset with overlaid model, if any. The model can be switched off by the **Show Model** check box in the bottom part of the right panel. Dragging the mouse rotates the scene around the vertical axis and displays other photos taken from the corresponding angles. If no photoset is loaded, this mode is disabled.
- **Scanner** view mode displays the live feed from the camera with overlaid model, if any. The model can be switched off by the **Show Model** check box in the bottom part of the right panel. Dragging the mouse rotates the real stone around the vertical axis. If there is no hardware connected, this mode is disabled.

 **Note**  
For the Scene in Model or Photos view, you can show the grid. For details, see "Scene Model and Photos View - Show Grid Option" in [Adjusting Interface](#).

## Right panel

Right panel controls the additional panels and reports. It contains the following groups of elements:

- View
  - **Model** switches to the model view.
  - **I3D Mini View** switches to the interactive 3D view
  - **Comparative I3D Mini View** switches to the interactive 3d view for comparing two models
  - **Photos** is a header for photosets, either scanned or loaded; clicking on a photoset switches to the photo view mode. This section is visible only when the left panel is set to **Scan & Build**. A photoset may be loaded by clicking  and unloaded by clicking .
  - **Facetware** toggles the additional panel [GIA Facetware](#) .
  - **Standard report** toggles the additional panel [Standard report](#) .
  - **My Appraiser** toggles the additional panel [My Appraiser](#) .
- Reports
  - [Polish Report](#) opens the interface window for generating and exporting one of the predefined reports.
  - [Custom report](#) opens the interface window for generating and exporting a custom report.
  - [Comparative Report](#) opens the interface window for generating and exporting a comparative report. This button is disabled unless two models are selected for comparison.
  - [Print label](#) opens the interface window for printing labels.
  - [Export Report Data - Color](#) opens the dropdown list of plain text report templates. Upon selection of a template, a plain text report is generated.
- Export Model opens the interface window for [exporting the model](#) .
- [Model Building Info \(MBI\)](#) .

✕

▼ View

Model

I3D Mini View

Comparative I3D Mini View

▼ Photos

+

Shadow

✕

Background

✕

Shadow Additional

✕

Scanner

Facetware

Standard Report

My Appraiser

▼ Reports

Polish Report...

Custom Report...

Comparative Report...

Print Label

⚙

Export Report Data

Export Model...

.....

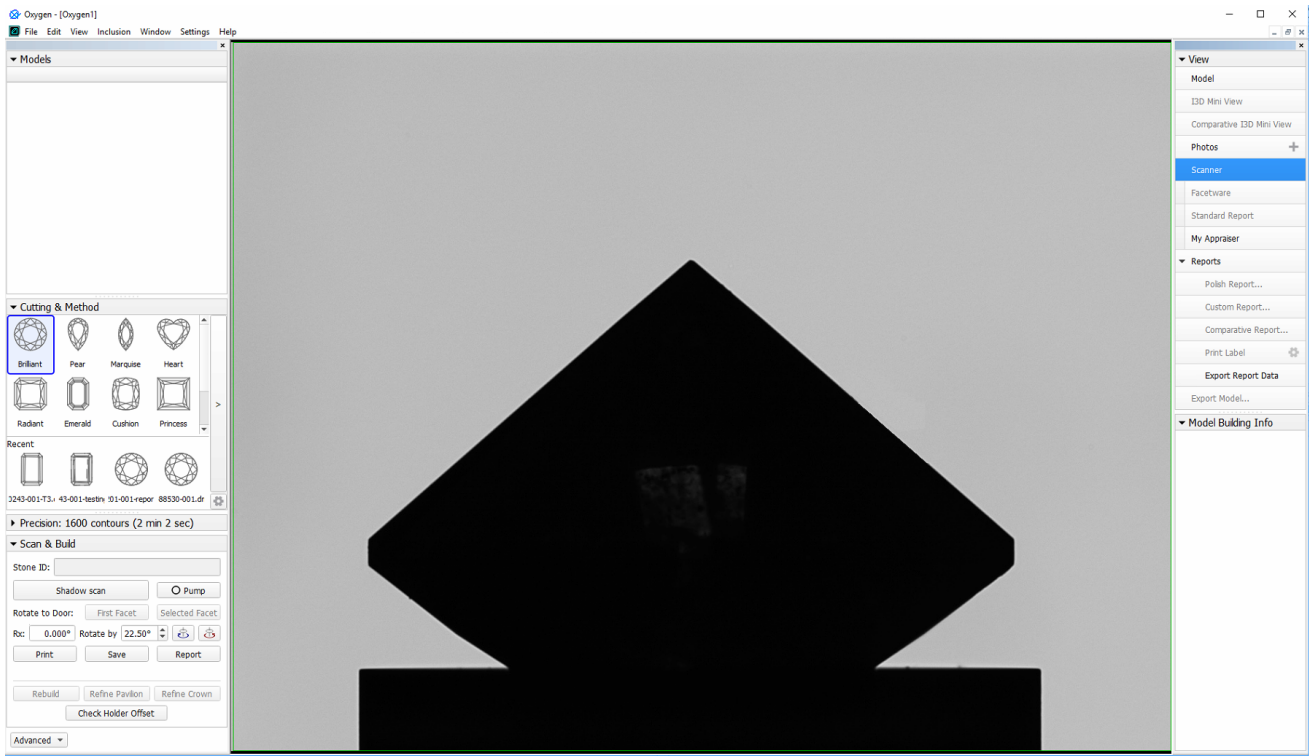
▼ Model Building Info

Buttons that control additional panels (**Facetware**, **Standard report**, **My Appraiser**) have an indicator to the left which turns green when the corresponding panel is shown.

## Special Modes

### Lock to Scan

The **Lock to scan** option for the user interface is available. The option locks the system to the **Scan & Build** mode and hides the Top Panel along with all the buttons.



To enable the option, go to **Settings > General Settings > General section > Display tab >** in the **Special Environment** group, select **Lock to scan**.

Application restart is required for the new setting to take effect.

