

2019.05.27 - Oxygen Server Microscope / Oxygen Immersion 5.1

Here you can find information about what is new in Oxygen Server Microscope and Oxygen Immersion version 5.1.

On this page:

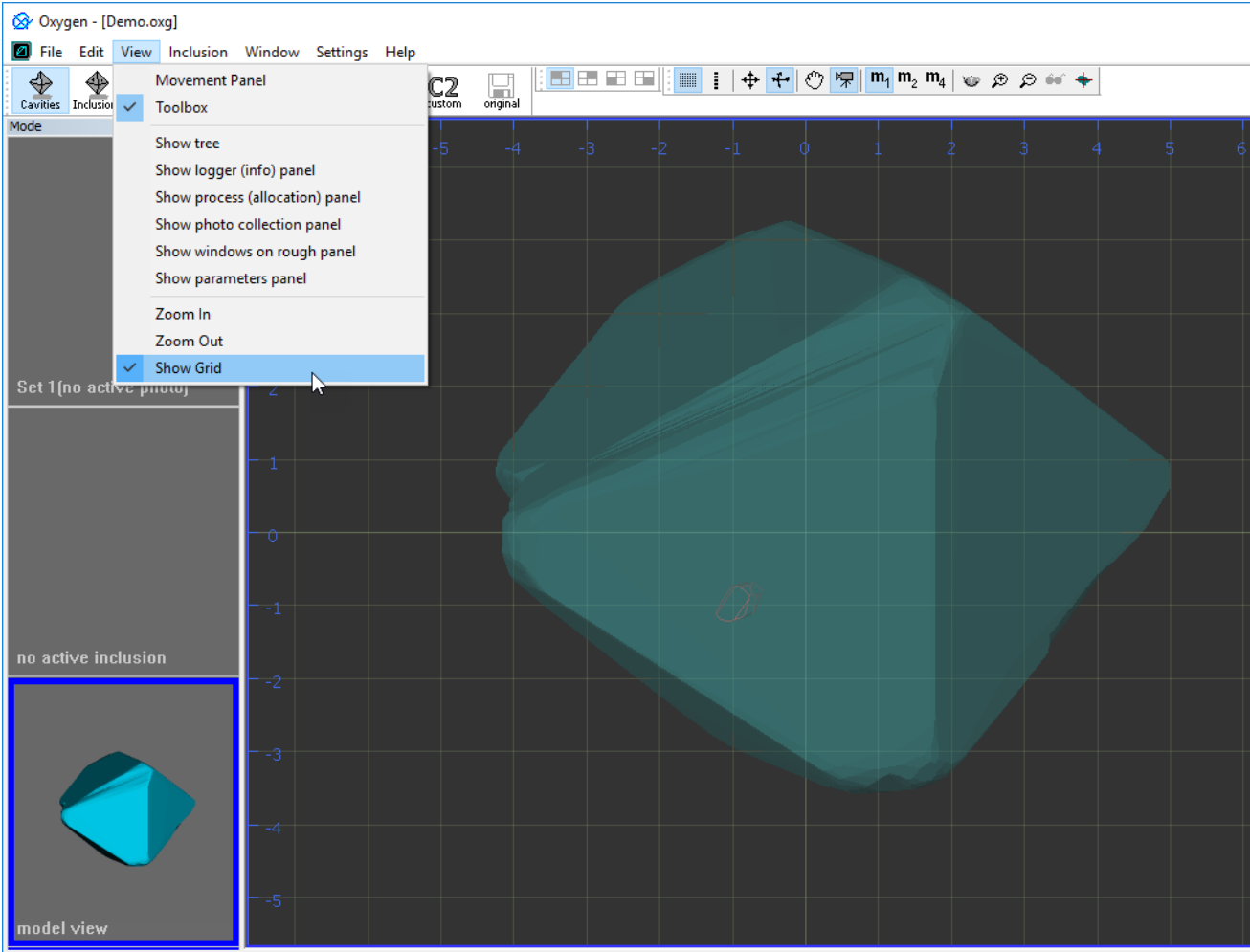
- 1 [Shared Features](#)
 - 1.1 [View Menu - Show Grid Item](#)
 - 1.2 [Optimized Log Output for Encoder vs. Motor Information](#)
 - 1.3 [Extended Character Map for On-Screen Text](#)
 - 1.4 [Fixed Problems and Improvements](#)
- 2 [Immersion Only Features](#)
 - 2.1 [Fixed Problems and Improvements](#)

Shared Features

The functionality described in this section is available both in Oxygen Server Microscope and Oxygen Immersion.

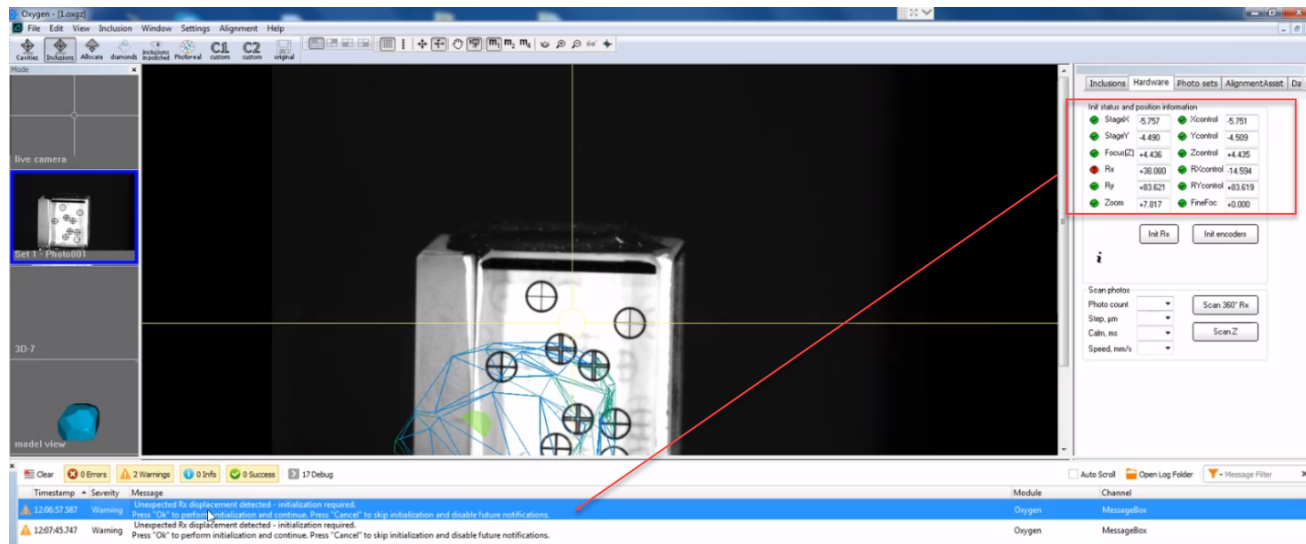
View Menu - Show Grid Item

In the **View** menu now the **Show Grid** item is presented which shows/hides the grid in the Scene.



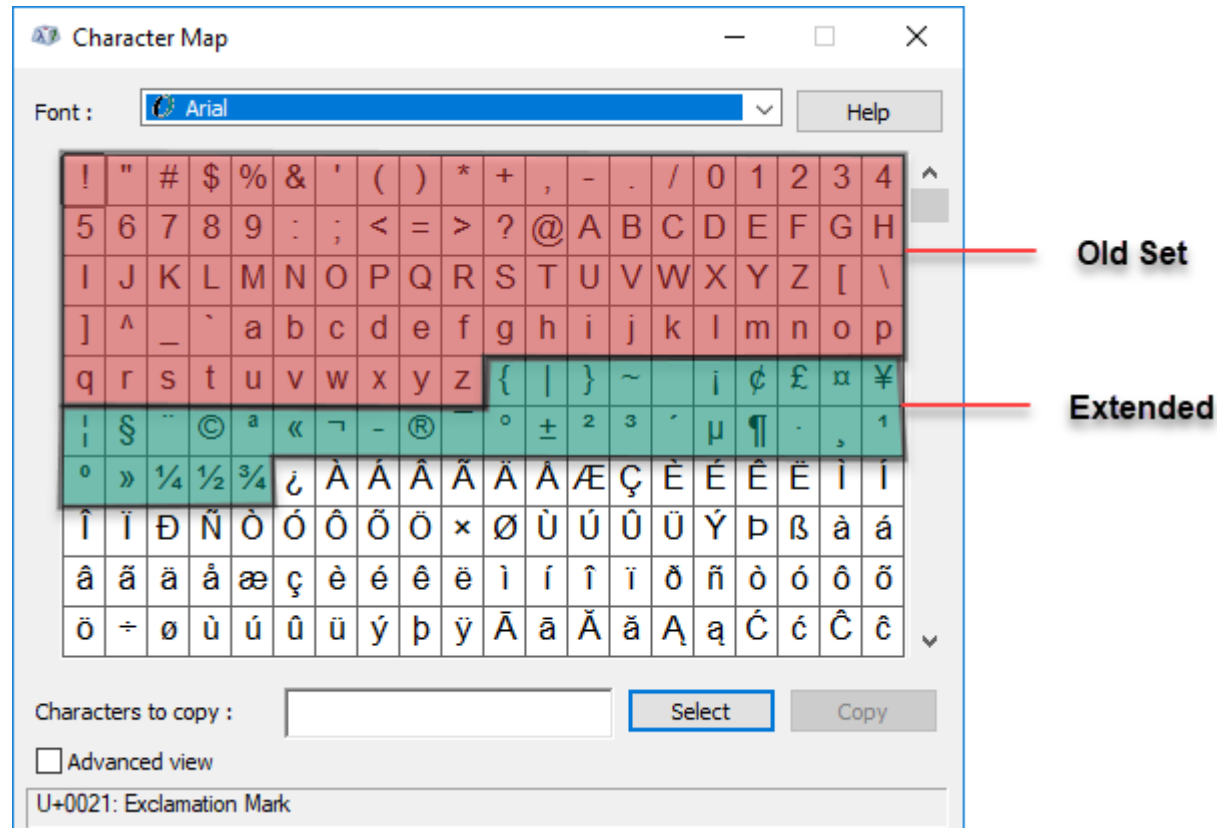
Optimized Log Output for Encoder vs. Motor Information

Sometimes in the system, specifically in cases of not calibrated microscopes, there is a gap between data of encoder and a microscope motor. In case of such discrepancies, the corresponding information appears in the log panel. Previously, the log was overloaded with this type of information. Now the output is improved so that you obtain information about the discrepancy of the encoder and motor data only needed amount of times, which information is later episodically repeated from time to time just to remind you about the case. The log is no more overloaded with this information.



Extended Character Map for On-Screen Text

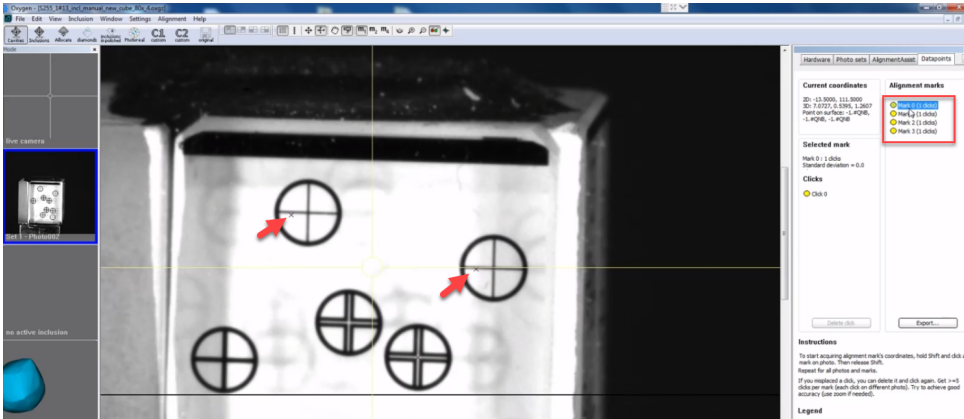
For the on-screen text, the character map has been extended to include some frequently used symbols like degree sign and others.



Fixed Problems and Improvements

The following fixes for the known problems and improvements have been implemented:

1. Various memory leaks have been fixed.
2. Various improvements and fixes in scene drawing have been implemented.
3. During the microscope calibration, when specifying the reference marks for the calibrating cube, the marks were not displayed. This error has been fixed - now the marks are displayed.



- 4. The on-screen text rendering problems have been solved.
- 5. Number of unexpected crashes during a microscope calibration has been reduced.
- 6. System stability on photo set scanning with auto-focus has been increased.
- 7. The system behavior in the auto-exposure mode has been optimized.
- 8. The line drawing technology has been improved which improved how figures and lines are drawn on the model and in the Scene.

Immersion Only Features

The functionality described in this section is available only in Oxygen Immersion.

Fixed Problems and Improvements

The following fixes for the known problems and improvements have been implemented:

- 1. System stability on photo set scanning has been increased.